

LAND FOR SALE

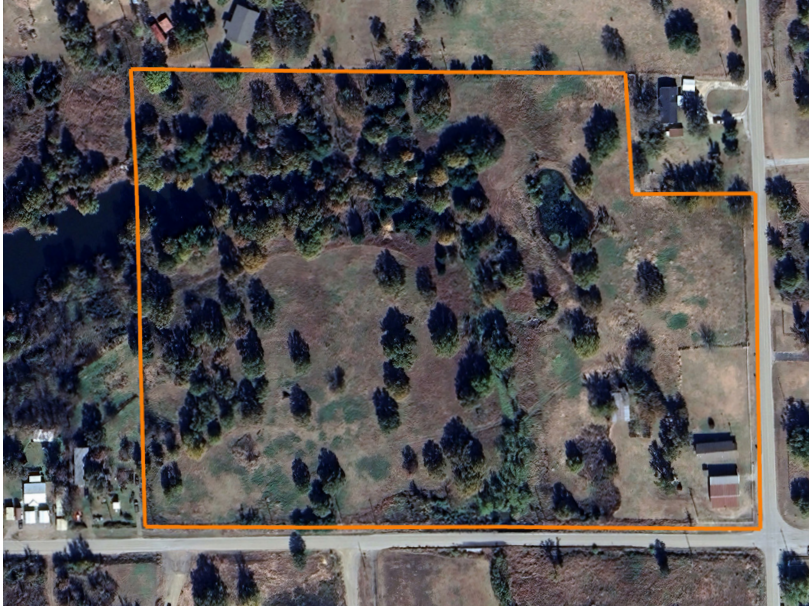
# NEW LISTING IN OAK GROVE COMMUNITY

PRICE: **\$285,000**

COUNTY: **PAYNE**

STATE: **OKLAHOMA**

ACRES: **19**



## PROPERTY FEATURES

- 1,740 square foot home
- 3 bedroom
- 2 bathroom
- 40'x50' shop
- Fenced
- 19 +/- acres
- Pond
- Paved road
- 1 mile from Highway 33
- 1 mile from Highway 99

For more information, contact:

**WHITNEY GEYER**, Land Agent

**918.807.6959** | [WGeyer@MidwestLandGroup.com](mailto:WGeyer@MidwestLandGroup.com)

**MidwestLandGroup.com**

This property is being offered by Midwest Land Group, LLC, 7111 W. 151st Street, Ste. 27, Overland Park, KS 66223, 913.674.8010. Licensed in AR, IL, IA, KS, KY, LA, MN, MS, MO, MT, NE, OH, OK, SD, TN, TX, WI, and WY.





LAND FOR SALE

# GORGEOUS 80 ACRE FARM WITH GREAT DEER HUNTING IN BUCHANAN COUNTY

PRICE: **\$267,000**

COUNTY: **BUCHANAN**

STATE: **MISSOURI**

ACRES: **80**



## PROPERTY FEATURES

- Prime property to build a home or cabin
- Gorgeous views
- Secluded southern exposure build site
- 25 minutes from I-29 and highway 152
- Well-maintained road only 1/4 mile to asphalt
- Great mix of open pasture and timber
- Beautiful 5 acre lake
- Great hunting
- Strong deer and turkey population
- Fertile soils for hay or row crop production



For more information, contact:

**WHITNEY GEYER**, Land Agent

**918.807.6959** | [WGeyer@MidwestLandGroup.com](mailto:WGeyer@MidwestLandGroup.com)

**MidwestLandGroup.com**



This property is being offered by Midwest Land Group, LLC, 7111 W. 151st Street, Ste. 27, Overland Park, KS 66223, 913.674.8010. Licensed in AR, IL, IA, KS, KY, LA, MN, MS, MO, MT, NE, OH, OK, SD, TN, TX, WI, and WY.



LAND FOR SALE

# GORGEOUS 80 ACRE FARM WITH GREAT DEER HUNTING IN BUCHANAN COUNTY

PRICE: **\$267,000**

COUNTY: **BUCHANAN**

STATE: **MISSOURI**

ACRES: **80**



## PROPERTY FEATURES

- Prime property to build a home or cabin
- Gorgeous views
- Secluded southern exposure build site
- 25 minutes from I-29 and highway 152
- Well-maintained road only 1/4 mile to asphalt
- Great mix of open pasture and timber
- Beautiful 5 acre lake
- Great hunting
- Strong deer and turkey population
- Fertile soils for hay or row crop production



For more information, contact:

**WHITNEY GEYER**, Land Agent

**918.807.6959** | [WGeyer@MidwestLandGroup.com](mailto:WGeyer@MidwestLandGroup.com)

**MidwestLandGroup.com**



This property is being offered by Midwest Land Group, LLC, 7111 W. 151st Street, Ste. 27, Overland Park, KS 66223, 913.674.8010. Licensed in AR, IL, IA, KS, KY, LA, MN, MS, MO, MT, NE, OH, OK, SD, TN, TX, WI, and WY.



# LAND FOR SALE

## GORGEOUS 80 ACRE FARM WITH GREAT HUNTING IN BUCHANAN COUNTY



### PROPERTY FEATURES

- Prime property to build a home or cabin
- Gorgeous views
- Secluded southern exposure build site
- 25 minutes from I-29 and highway 152
- Well-maintained road only 1/4 mile to asphalt
- Great mix of open pasture and timber
- Beautiful 5 acre lake
- Great hunting
- Strong deer and turkey population
- Fertile soils for hay or row crop production



PRICE: **\$267,000**

COUNTY: **BUCHANAN**

STATE: **MISSOURI**

ACRES: **80**

For more information, contact:

**WHITNEY GEYER**, Land Agent

**918.807.6959** | [WGeyer@MidwestLandGroup.com](mailto:WGeyer@MidwestLandGroup.com)

**MidwestLandGroup.com** BUYERS, SELLERS, AND LAND – CONNECTED

This property is being offered by Midwest Land Group, LLC, 7111 W. 151st Street, Ste. 27, Overland Park, KS 66223, 913.674.8010.  
Licensed in AR, IL, IA, KS, KY, LA, MN, MS, MO, MT, NE, OH, OK, SD, TN, TX, WI, and WY.

