

LAND FOR SALE

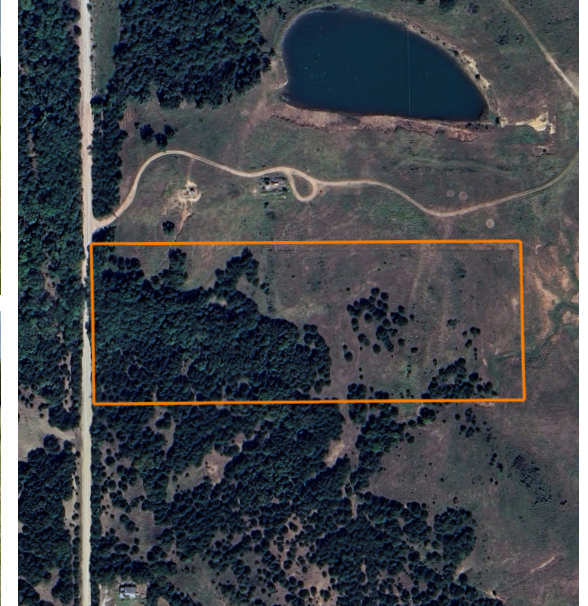
CONVENIENTLY PLACED 15 +/- ACRES JUST SOUTH OF INTERSTATE 412

PRICE: **\$72,500**

COUNTY: **PAWNEE**

STATE: **OKLAHOMA**

ACRES: **15**



PROPERTY FEATURES

- 2,618 square foot home
- 1,430 square foot main floor
- 1,188 square foot basement
- 4 bed, 3 bath
- Living areas on both floors
- 24'x24' shop
- 10'x16' storage shed
- 8'x15' storage shed
- Private well
- City water
- 1/4 mile to NEA Baptist Hospital
- Brookland School District
- Gorgeous yard covered with mature trees
- Sprinkler system

For more information, contact:

WILL PESTER, Land Agent

918.578.9353 | WPester@MidwestLandGroup.com

MidwestLandGroup.com

This property is being offered by Midwest Land Group, LLC, 7111 W. 151st Street, Ste. 27, Overland Park, KS 66223, 913.674.8010. Licensed in AR, IL, IA, KS, KY, LA, MN, MS, MO, MT, NE, OH, OK, SD, TN, TX, WI, and WY.

