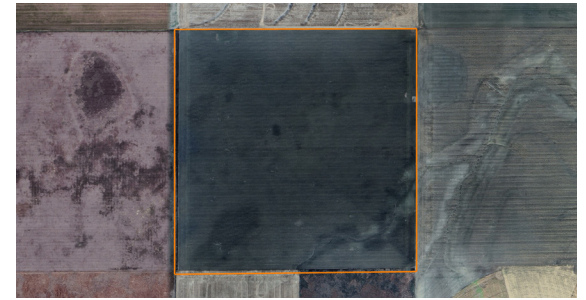


LAND FOR SALE

FINNEY COUNTY CROPLAND QUARTER

PRICE: **\$560,000**
COUNTY: **FINNEY**
STATE: **KANSAS**
ACRES: **160**



PROPERTY FEATURES

- Flat topography
- Easy access
- Quality Class II soil
- Mineral rights transfer
- 99% tillable acres
- 1 mile north of Finney-Gray County line
- Tillable farmland investment
- Productive crop history



For more information, contact:

KAYANNA HEMMEKE, Land Agent

620.566.7889 | KHammeke@MidwestLandGroup.com

MidwestLandGroup.com



This property is being offered by Midwest Land Group, LLC, 7111 W. 151st Street, Ste. 27, Overland Park, KS 66223, 913.674.8010.
Licensed in AR, IL, IA, KS, KY, LA, MN, MS, MO, MT, NE, OH, OK, SD, TN, TX, WI, and WY.