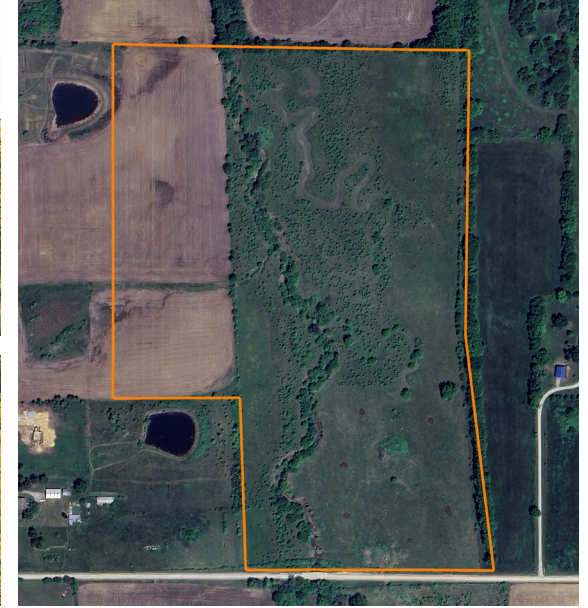


LAND FOR SALE

50 +/- ACRES BETWEEN LAWRENCE AND BALDWIN CITY

PRICE: **\$325,000**
COUNTY: **DOUGLAS**
STATE: **KANSAS**
ACRES: **50**



PROPERTY FEATURES

- 50 +/- acres
- Blacktop road frontage
- West and south access
- 10 acres build site/crop ground
- 40 acres of pasture
- Large creek
- Utilities at the road
- Prime location
- South of Lawrence, approximately 8 miles
- North of Baldwin City, 5.5 miles



For more information, contact:

CLAY CRAFT, Land Agent

913.677.0299 | CCraft@MidwestLandGroup.com

MidwestLandGroup.com



This property is being offered by Midwest Land Group, LLC, 7111 W. 151st Street, Ste. 27, Overland Park, KS 66223, 913.674.8010.
Licensed in AL, AR, IL, IN, IA, KS, KY, LA, MN, MS, MO, MT, NE, OH, OK, SD, TN, TX, WI, and WY.