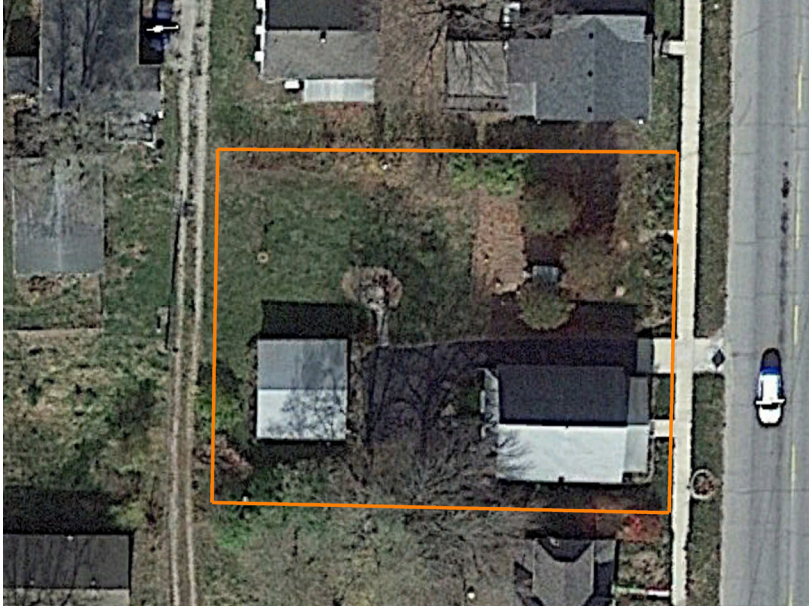


LAND FOR SALE

CHARMING CRAFTSMAN HOME IN THE HEART OF LEON

PRICE: **\$114,900**
COUNTY: **DECATUR**
STATE: **IOWA**
ACRES: **.3**



PROPERTY FEATURES

- Charming craftsman-style home with vintage character
- 4 bedrooms, including 2 on the main level and 2 upstairs
- Jack and Jill bathroom connects the two main-level bedrooms
- Freshly repainted interior with a clean, updated feel
- Spacious double lot—larger than most in the neighborhood
- Asphalt driveway leading to a detached two-car garage
- Back patio/deck off the kitchen, perfect for morning coffee or evening relaxation
- Located just steps from Leon's business district—walk to shops, dining, and services

For more information, contact:

HEATH MARTIN, Land Agent

641.351.6025 | HeathMartin@MidwestLandGroup.com

MidwestLandGroup.com



This property is being offered by Midwest Land Group, LLC, 7111 W. 151st Street, Ste. 27, Overland Park, KS 66223, 913.674.8010. Licensed in AL, AR, IL, IA, KS, KY, LA, MN, MS, MO, MT, NE, OH, OK, SD, TN, TX, WI, and WY.