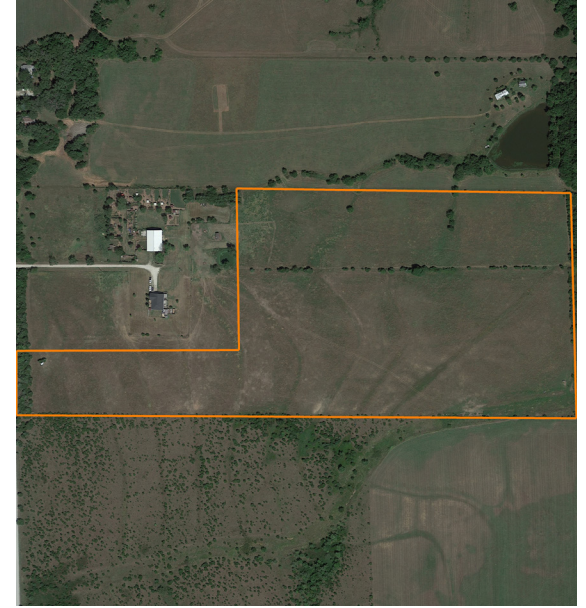


LAND FOR SALE

# 28 +/- ACRE BUILD SITE NEAR DOUGLASS

PRICE: **\$245,000**  
COUNTY: **COWLEY**  
STATE: **KANSAS**  
ACRES: **28**



## PROPERTY FEATURES

- 28 +/- Acres
- Build Site
- Utilities At Road
- Well Maintained Gravel Road
- 360 Degree Views
- Native Grass Meadow
- Mineral Rights Transfer
- 6 Miles to Douglass, KS
- 9 Miles to Udall, KS
- 17 Miles to Derby, KS
- 28 Miles to Wichita, KS



For more information, contact:

**SHAUN REID**, Land Agent

**316.210.6680** | [SReid@MidwestLandGroup.com](mailto:SReid@MidwestLandGroup.com)

**MidwestLandGroup.com**

This property is being offered by Midwest Land Group, LLC, 7111 W. 151st Street, Ste. 27, Overland Park, KS 66223, 913.674.8010.  
Licensed in AL, AR, IL, IN, IA, KS, KY, LA, MN, MS, MO, MT, NE, OH, OK, SD, TN, TX, WI, and WY.

