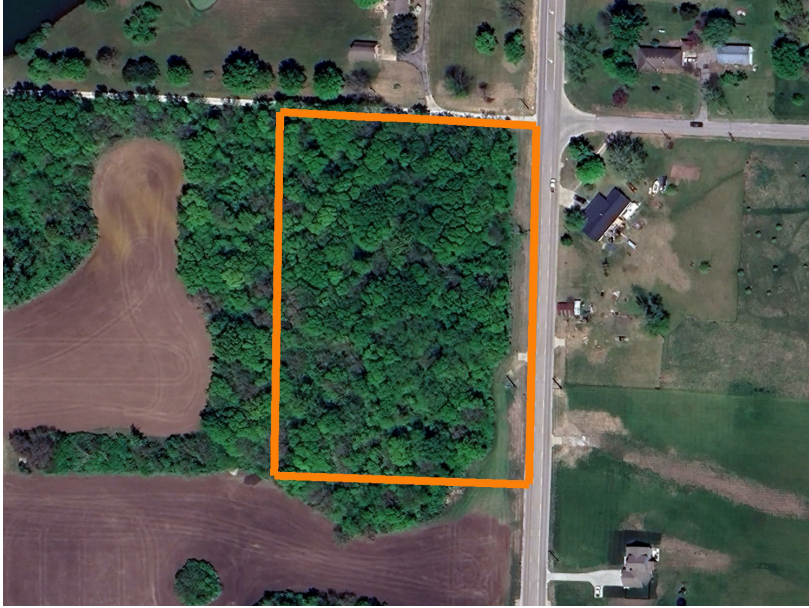


LAND FOR SALE

# PREMIER HOMESITE ACREAGES IN RAY-PEC SCHOOLS: LOT 1

PRICE: **\$199,950**  
COUNTY: **CASS**  
STATE: **MISSOURI**  
ACRES: **5.03**



## PROPERTY FEATURES

- 5.03 acres
- Open, wooded mix
- Walkout lots
- Chip and seal private road
- Outside city limits
- Spectacular views
- Quick access to I-49
- Raymore-Peculiar Schools
- Power available
- Water connections available
- Wildlife
- 15 minutes from Kansas City

For more information, contact:

**BEN EWBank**, Land Broker

**816.820.2345** | [BEwbank@MidwestLandGroup.com](mailto:BEwbank@MidwestLandGroup.com)

**MidwestLandGroup.com**



This property is being offered by Midwest Land Group, LLC, 7111 W. 151st Street, Ste. 27, Overland Park, KS 66223, 913.674.8010. Licensed in AL, AR, IL, IN, IA, KS, KY, LA, MN, MS, MO, MT, NE, OH, OK, SD, TN, TX, WI, and WY.