

LAND FOR SALE

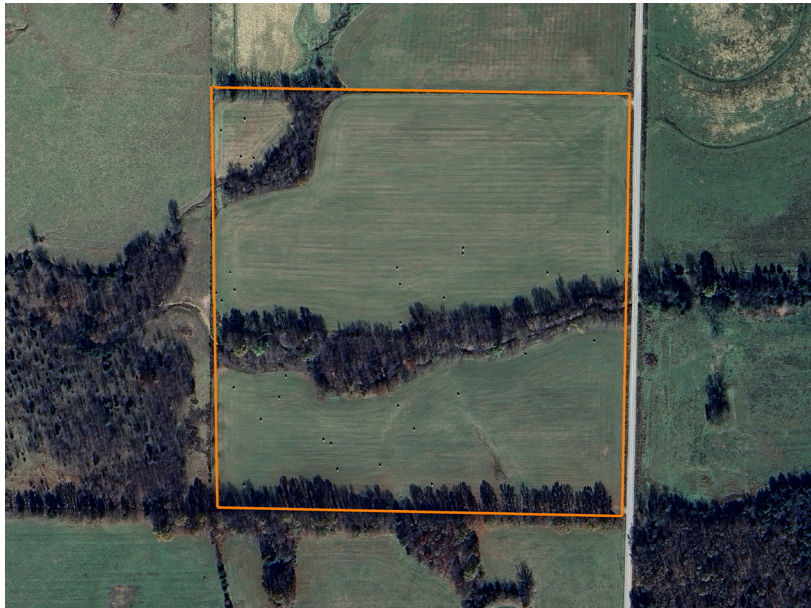
PREMIUM TILLABLE GROUND

PRICE: **\$340,000**

COUNTY: **WEBSTER**

STATE: **MISSOURI**

ACRES: **40**



PROPERTY FEATURES

- Close to town
- Tillable ground
- An abundance of wildlife
- New fences
- 17/17/17 fertilizer was recently spread
- Beautiful build sites
- Wet weather creek
- Several young walnut trees
- Easy access to I-44
- Nice maintained road



For more information, contact:

LOGAN MILLER, Land Agent

417.532.6165 | LMiller@MidwestLandGroup.com

MidwestLandGroup.com

This property is being offered by Midwest Land Group, LLC, 7111 W. 151st Street, Ste. 27, Overland Park, KS 66223, 913.674.8010. Licensed in AR, IL, IA, KS, KY, LA, MN, MS, MO, MT, NE, OH, OK, SD, TN, TX, WI, and WY.

