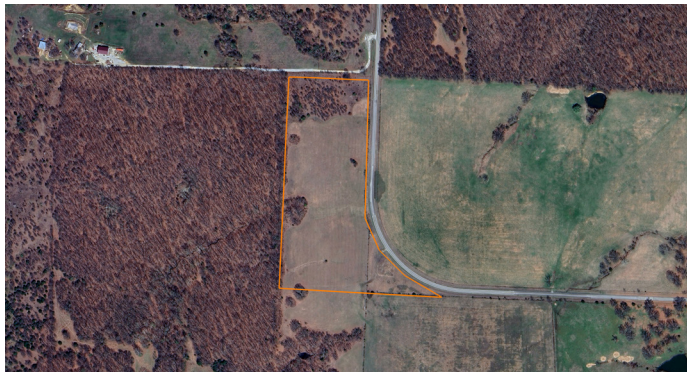


# LAND FOR SALE

## AMAZING SMALL ACREAGE COUNTRY BUILD SITE- TRACT 1



### PROPERTY FEATURES

- Highway B blacktop frontage
- Electricity along the road
- Mostly fenced with newer fencing
- Peaceful and quiet area
- Beautiful pasture
- Deer and turkey hunting opportunities
- Additional acreage available
- 12 miles to Osceola and 32 miles to Clinton
- Under 30 minutes to Truman Lake
- Under 1 hour to Stockton Lake
- 1 hour 30 minutes to Kansas City area



PRICE: **\$106,000**

COUNTY: **SAINT CLAIR**

STATE: **MISSOURI**

ACRES: **17**

For more information, contact:

**SKYLER WIRSIG**, Land Agent

**816.500.0168** | [SWirsig@MidwestLandGroup.com](mailto:SWirsig@MidwestLandGroup.com)

**MidwestLandGroup.com** BUYERS, SELLERS, AND LAND – CONNECTED

This property is being offered by Midwest Land Group, LLC, 7111 W. 151st Street, Ste. 27, Overland Park, KS 66223, 913.674.8010.  
Licensed in AR, IL, IA, KS, KY, LA, MN, MS, MO, MT, NE, OH, OK, SD, TN, TX, WI, and WY.

