

LAND FOR SALE

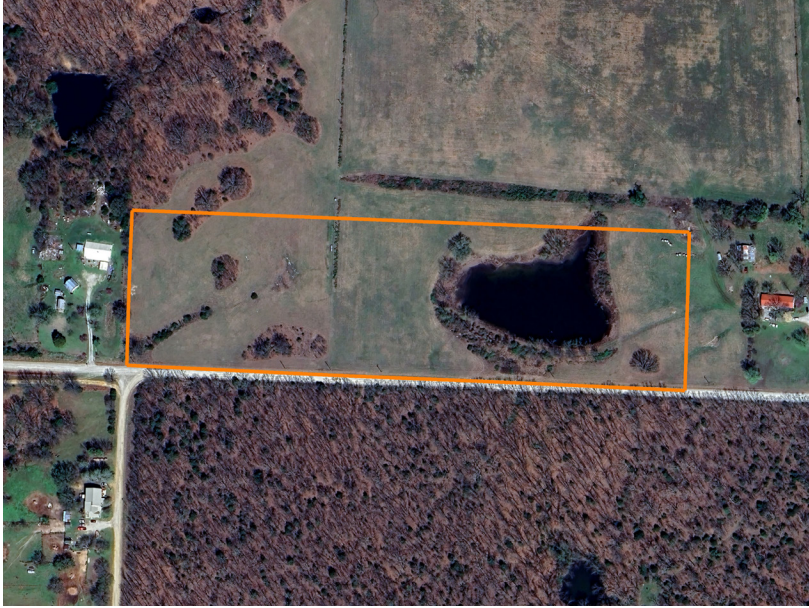
# SMALL ACREAGE BUILD SITE WITH A POND - TRACT 4

PRICE: **\$82,550**

COUNTY: **SAINT CLAIR**

STATE: **MISSOURI**

ACRES: **13**



## PROPERTY FEATURES

- Less than a half mile off blacktop
- Electricity along the road
- Mostly fenced with newer fencing
- Peaceful and quiet area
- Beautiful pasture
- Spring-fed pond
- Additional acreage available
- 12 miles to Osceola
- 32 miles to Clinton
- Under 30 minutes to Truman Lake
- Under 1 hour to Stockton Lake
- 1 hour 30 minutes to Kansas City area



For more information, contact:

**SKYLER WIRSIG**, Land Agent

**816.500.0168** | [SWirsig@MidwestLandGroup.com](mailto:SWirsig@MidwestLandGroup.com)

**MidwestLandGroup.com**

This property is being offered by Midwest Land Group, LLC, 7111 W. 151st Street, Ste. 27, Overland Park, KS 66223, 913.674.8010.  
Licensed in AL, AR, IL, IA, KS, KY, LA, MN, MS, MO, MT, NE, OH, OK, SD, TN, TX, WI, and WY.

