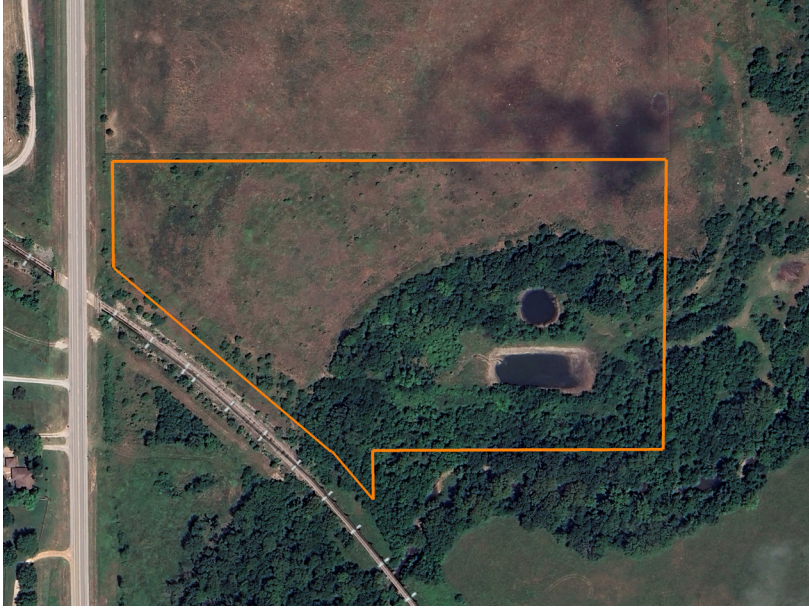


LAND FOR SALE

# HIGHWAY 88 FRONTAGE NEAR OOLOGAH LAKE

PRICE: **\$220,480**  
COUNTY: **ROGERS**  
STATE: **OKLAHOMA**  
ACRES: **16.5**



## PROPERTY FEATURES

- Recent survey
- Highway 88 frontage
- Utilities on site
- Sequoyah School District
- 3 miles from Oologah Lake
- Pasture, timber mix
- Beautiful bluff view
- 2 ponds



For more information, contact:

**TONY PRIDEAUX**, Land Agent

**918.960.1226** | [TPrideaux@MidwestLandGroup.com](mailto:TPrideaux@MidwestLandGroup.com)

**MidwestLandGroup.com**

This property is being offered by Midwest Land Group, LLC, 7111 W. 151st Street, Ste. 27, Overland Park, KS 66223, 913.674.8010.  
Licensed in AR, IL, IA, KS, KY, LA, MN, MS, MO, MT, NE, OH, OK, SD, TN, TX, WI, and WY.

