

LAND FOR SALE

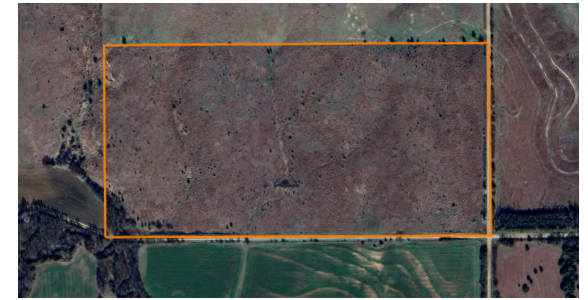
OPEN PASTURE WITH STUNNING HOMESITE VIEWS

PRICE: **\$219,000**

COUNTY: **McPHERSON**

STATE: **KANSAS**

ACRES: **75**



PROPERTY FEATURES

- Immediate possession to graze
- Great roads along the south and east side
- Thick stand of grass
- Native Grass
- 4 and 5-strand barbed wire fence
- Power on Property
- Excellent Topography
- 28 miles Lyons, KS
- 17 miles McPherson, KS
- 34 miles Hutchinson, KS
- 42 miles Salina, KS



For more information, contact:

TYLER HEIL, Land Agent

620.869.7083 | THeil@MidwestLandGroup.com

MidwestLandGroup.com



This property is being offered by Midwest Land Group, LLC, 7111 W. 151st Street, Ste. 27, Overland Park, KS 66223, 913.674.8010. Licensed in AR, IL, IA, KS, KY, LA, MN, MS, MO, MT, NE, OH, OK, SD, TN, TX, WI, and WY.