

MIDWEST LAND GROUP PRESENTS

4.3 ACRES IN

# JACKSON COUNTY MISSOURI



800 SW MO-150, LEE'S SUMMIT, MISSOURI, 64082



MIDWEST LAND GROUP IS HONORED TO PRESENT

# PRIME CHURCH OR COMMERCIAL PROPERTY IN SOUTHERN LEE'S SUMMIT

Discover a rare opportunity to own a versatile and visually striking property located just north of Raintree Lake on MO-150 in southern Lee's Summit. Situated on a generous 4.3 acre parcel, this property offers both functionality and curb appeal, making it ideal for a variety of uses, including religious, educational, entertainment, or other commercial ventures.

The primary building is a commanding octagonal dome structure boasting over 16,000 square feet of space. Featuring a handsome brick exterior and a welcoming main entrance, three sets of double doors open into a spacious vestibule/lobby. The large sanctuary offers soaring ceilings, a stage, and an integrated lighting and sound system - perfectly suited for worship services, performances, or presentations. A full

basement expands the usable space even further and includes a large kitchen, making it ideal for gatherings, community events, or flexible workspace. In addition, a second building on-site is a two-story, 6,500 square foot metal structure with a brick façade. Formerly used as classroom space, it offers several rooms that can be easily adapted into offices, meeting rooms, or training spaces.

The grounds are equally impressive, with dual access points, wrap-around parking, an expansive lawn, wide sidewalks, and mature trees and landscaping that enhance the overall setting. This property combines substantial infrastructure with location, flexibility, and potential - ready to accommodate your organization's unique vision and needs.





# PROPERTY FEATURES

PRICE: **\$2,299,000** | COUNTY: **JACKSON** | STATE: **MISSOURI** | ACRES: **4.3**

- 16,000+ sq. ft. church building
- Octagonal dome structure
- Large sanctuary
- Full basement
- Large kitchen
- 6,500 sq. ft. metal building
- Many classrooms and/or offices
- 4.3 acres
- Highway frontage
- Multiple entrances
- Wrap-around parking
- Expansive lawn
- Beautiful landscaping
- Extensive sidewalks
- Highly-desirable location

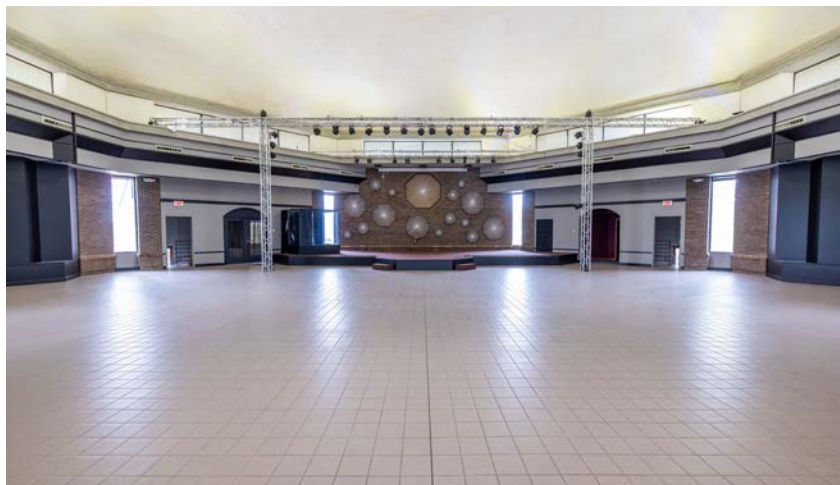
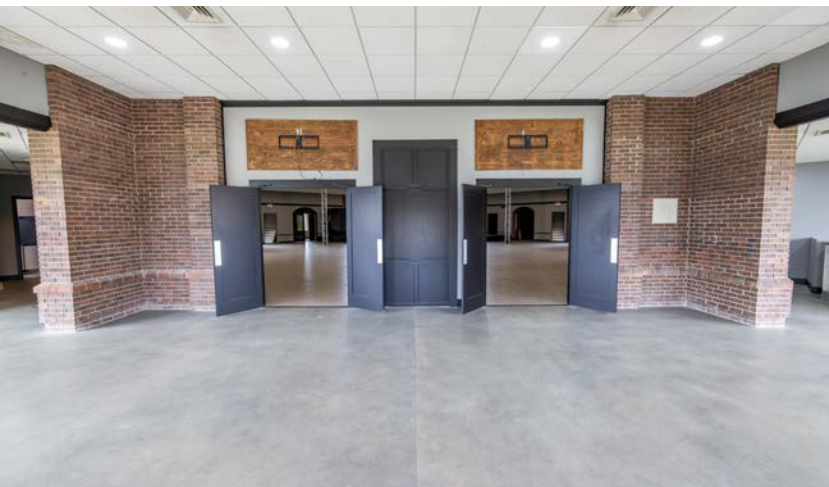




# 16,000+ SQ. FT. CHURCH BUILDING

---

The primary building is a commanding octagonal dome structure featuring a handsome brick exterior and a welcoming main entrance, three sets of double doors open into a spacious vestibule/lobby.





# LARGE SANCTUARY

---



# FULL BASEMENT

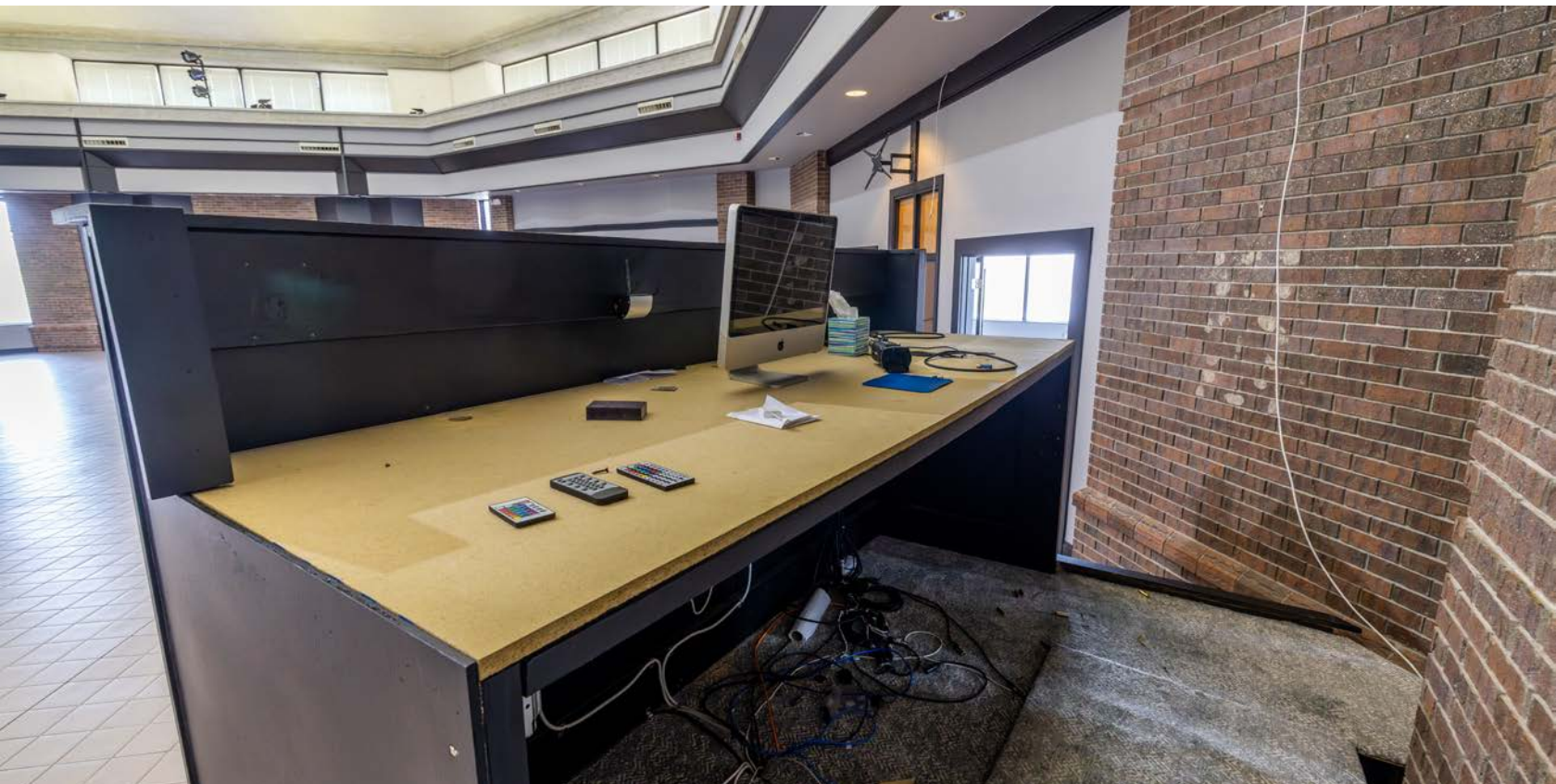
---





# INTEGRATED LIGHTING & SOUND SYSTEM

---





# LARGE KITCHEN





# 6,500 SQ. FT. METAL BUILDING

---

In addition, a second building on-site is a two-story, 6,500 square foot metal structure with a brick façade. Formerly used as classroom space, it offers several rooms that can be easily adapted into offices, meeting rooms, or training spaces.





# MANY CLASSROOMS AND/OR OFFICES

---





# EXPANSIVE LAWN

---



# MATURE TREES AND LANDSCAPING

---





# WRAP-AROUND PARKING

---





# ADDITIONAL PHOTOS

---





# AERIAL MAP



©2025 AgriData, Inc.



Maps Provided By:



© AgriData, Inc. 2023

www.AgriDataInc.com

Boundary Center: 38° 51' 14.88, -94° 23' 38.46

**30-47N-31W**  
**Jackson County**  
**Missouri**

0ft 131ft 261ft



4/10/2025



# HILLSHADE MAP



Low Elevation High



Maps Provided By:



© AgriData, Inc. 2023 www.AgriDataInc.com

Source: USGS 1 meter dem

Interval(ft): 10

Min: 994.3

Max: 1,010.9

Range: 16.6

Average: 1,003.3

Standard Deviation: 3.22 ft

0ft 134ft 267ft



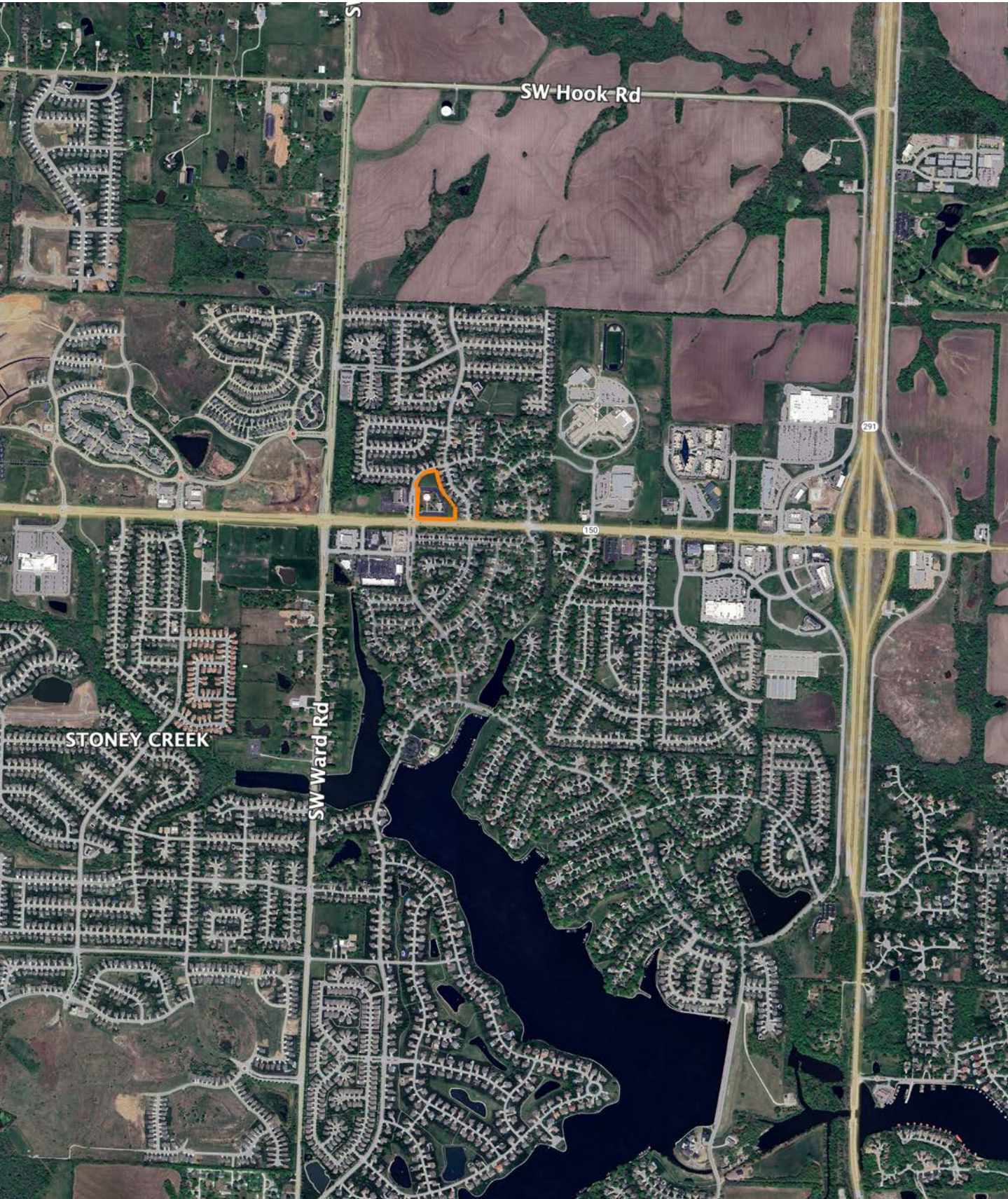
4/10/2025

**30-47N-31W**  
**Jackson County**  
**Missouri**

Boundary Center: 38° 51' 14.88, -94° 23' 38.46



# OVERVIEW MAP





# BROKER CONTACT

---

Serving Western Missouri and Eastern Kansas, Ben brings a wealth of knowledge and passion to his role. After five years in the industry, he has experience selling a wide variety of types of land and rural properties, and has developed an intimate understanding of the market's nuances, navigating various market conditions successfully.

Ben holds a Bachelor of Science in Technology, specializing in Construction Management, from Pittsburg State University. His professional background in estimating and project management equips him with the skills to accurately evaluate properties and communicate effectively with clients. He frequently demonstrates the willingness and expertise to problem-solve and utilize marketing strategies such as subdividing and other creative solutions for optimizing the values of properties.

Growing up in Raymore, Missouri, he developed a love for hunting and fishing, spending time in the outdoors throughout several counties across western Missouri. His extensive hunting experience, love for the outdoors, and personal connection to land ownership enhance his expertise. As a top-performing agent with various accolades, Ben's consistent sales record speaks volumes about his commitment and proficiency.

Outside of work, Ben enjoys hunting, fishing, cooking, and spending time with his wife Sara and their four children. Clients seeking to sell or buy property in Missouri and Kansas can trust Ben's dedication and market insight to achieve real estate goals.



**BEN EWBank,** LAND BROKER  
**816.820.2345**  
BEwbank@MidwestLandGroup.com



## MidwestLandGroup.com

This property is being offered by Midwest Land Group, LLC. 913.674.8010. All information provided by Midwest Land Group, LLC or their agents was acquired from sources deemed accurate and reliable, however we do not warrant its accuracy or completeness. Midwest Land Group, LLC assumes no liability for error, omission or investment results. Midwest Land Group, LLC. Licensed in Arkansas, Illinois, Iowa, Kansas, Kentucky, Louisiana, Minnesota, Mississippi, Missouri, Montana, Nebraska, Ohio, Oklahoma, South Dakota, Tennessee, Texas, Wisconsin, and Wyoming.