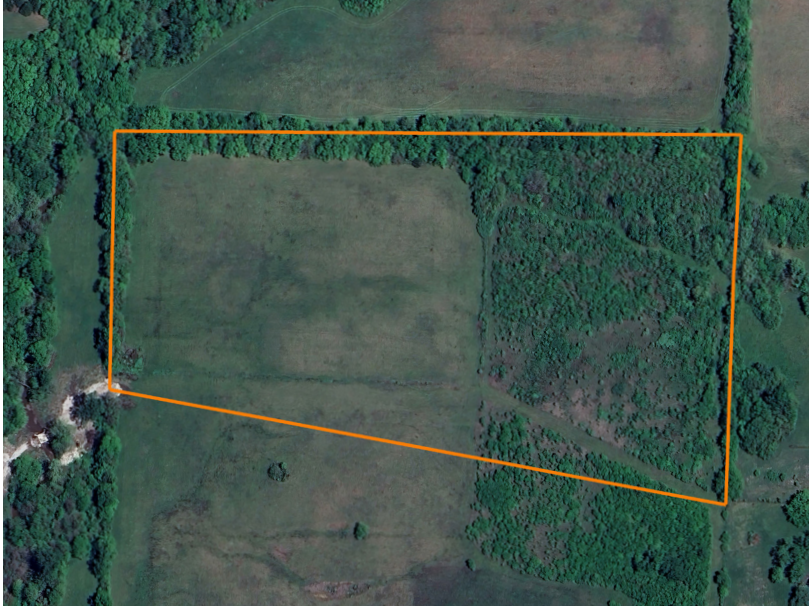


LAND FOR SALE

# LUSH GRASSLAND AND TIMBER ON 22 ACRES

PRICE: **\$396,000**  
COUNTY: **JACKSON**  
STATE: **MISSOURI**  
ACRES: **22**



## PROPERTY FEATURES

- Tract 3 - 22 surveyed acres
- Balance of grassland and timber brush area
- Ideal location for a large pond construction
- Excellent for UTV and dirtbike trail riding
- Beautiful views overlooking the property from build location
- Blacktop gated access
- Stone Creek crossing
- No developer restrictions and no HOA
- Whitetail and turkey hunting
- Gravel drive in place
- Public water, electric, and fiber are available
- Lone Jack School District
- 2024 taxes \$89.80

For more information, contact:

**WILL WIEST**, Land Broker

**816.826.3135** | [WWiest@MidwestLandGroup.com](mailto:WWiest@MidwestLandGroup.com)

**MidwestLandGroup.com**



This property is being offered by Midwest Land Group, LLC, 7111 W. 151st Street, Ste. 27, Overland Park, KS 66223, 913.674.8010. Licensed in AR, IL, IA, KS, KY, LA, MN, MS, MO, MT, NE, OH, OK, SD, TN, TX, WI, and WY.