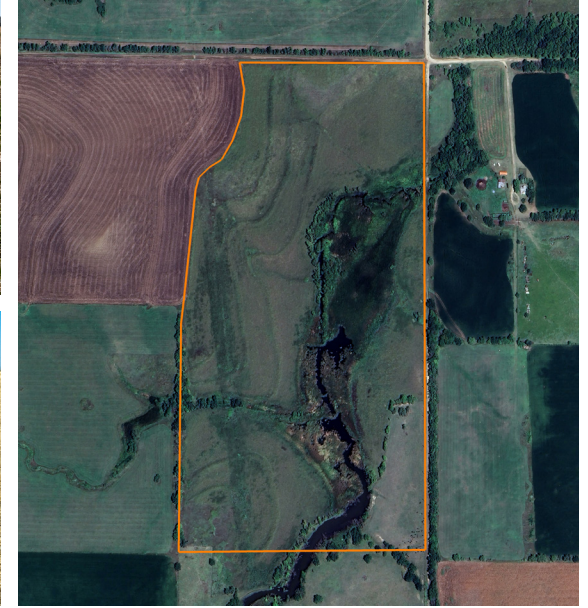


LAND FOR SALE

DIVERSE RECREATIONAL PROPERTY NEAR HERINGTON LAKE

PRICE: **\$266,000**
COUNTY: **DICKINSON**
STATE: **KANSAS**
ACRES: **70**



PROPERTY FEATURES

- Live water creek
- Duck marsh
- Deer hunting
- Upland bird habitat
- 52 +/- acres enrolled in CRP
- CRP annual payment of \$2,744
- Enrolled in walk-in hunting
- Near Herington Lakes
- 5 miles to Hope, KS
- 6.5 miles to Herington, KS
- 82 miles to Wichita, KS
- 98 miles to Topeka, KS



For more information, contact:

SHAUN REID, Land Agent

316.210.6680 | SReid@MidwestLandGroup.com

MidwestLandGroup.com



This property is being offered by Midwest Land Group, LLC, 7111 W. 151st Street, Ste. 27, Overland Park, KS 66223, 913.674.8010. Licensed in AR, IL, IA, KS, KY, LA, MN, MS, MO, MT, NE, OH, OK, SD, TN, TX, WI, and WY.