

MIDWEST LAND GROUP PRESENTS

45 ACRES IN

CHEATHAM COUNTY TENNESSEE



MidwestLandGroup.com

MIDWEST LAND GROUP IS HONORED TO PRESENT

UNRESTRICTED 45 +/- ACRES IN CHEATHAM COUNTY, TENNESSEE

Located just 2 miles north of Ashland City, this stunning 45 +/- acre property offers the perfect blend of natural beauty, investment potential, and convenience. With approximately 42 +/- acres of mature hardwoods and the scenic Marks Creek meandering through the land, it's a haven for nature lovers and outdoor enthusiasts alike.

A 3 +/- acre pasture provides an excellent space for a food plot or the perfect spot to build your dream home.

With 100 feet of frontage on Highway 49 and direct access from Frey Street, this prime location is only 30 minutes from downtown Nashville, offering the best of both worlds—peaceful, rural living with city amenities within easy reach.

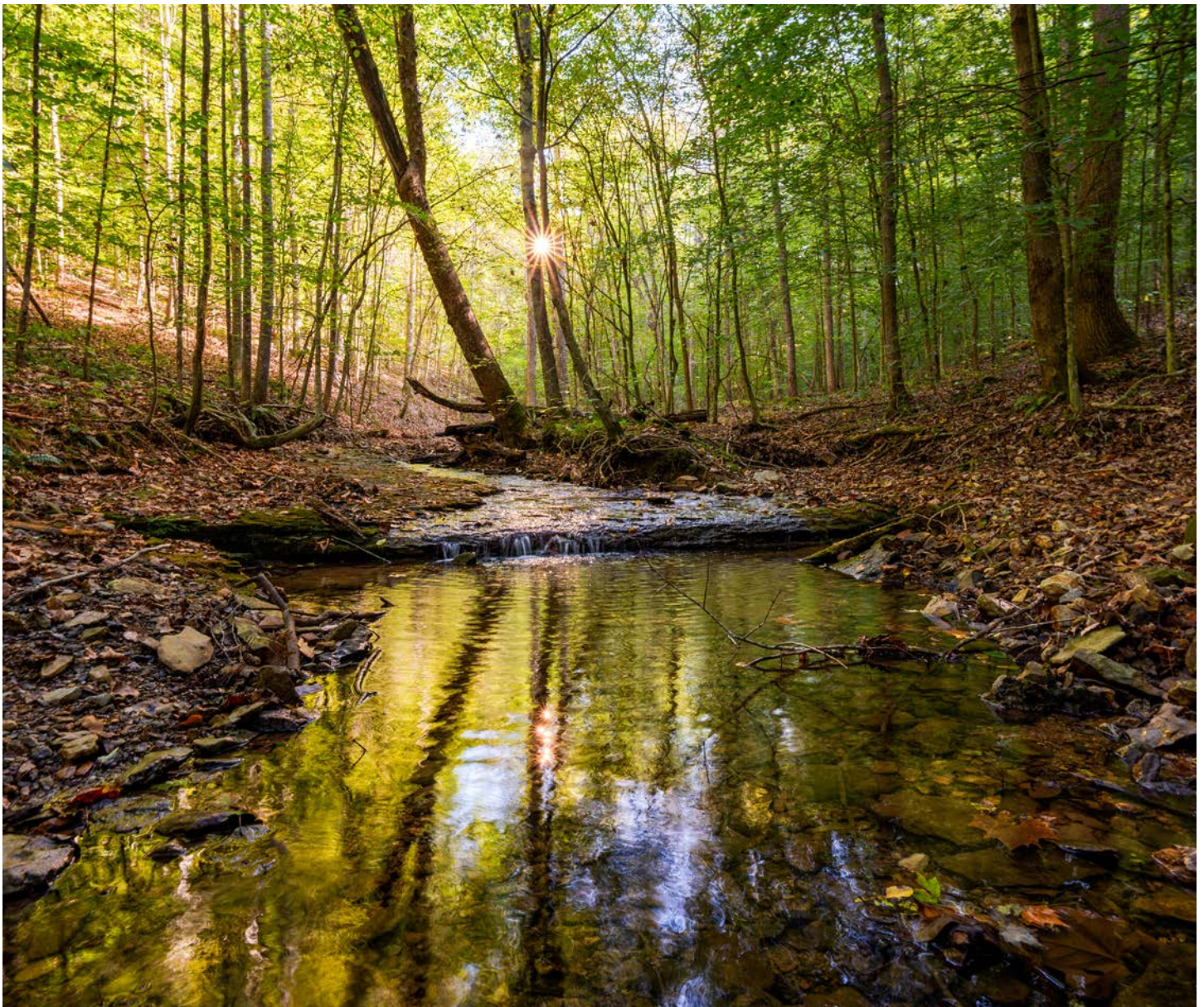
Whether you're looking for a private retreat, a hunter's paradise, or a smart investment opportunity, this exceptional property in beautiful Cheatham County is not to be missed!



PROPERTY FEATURES

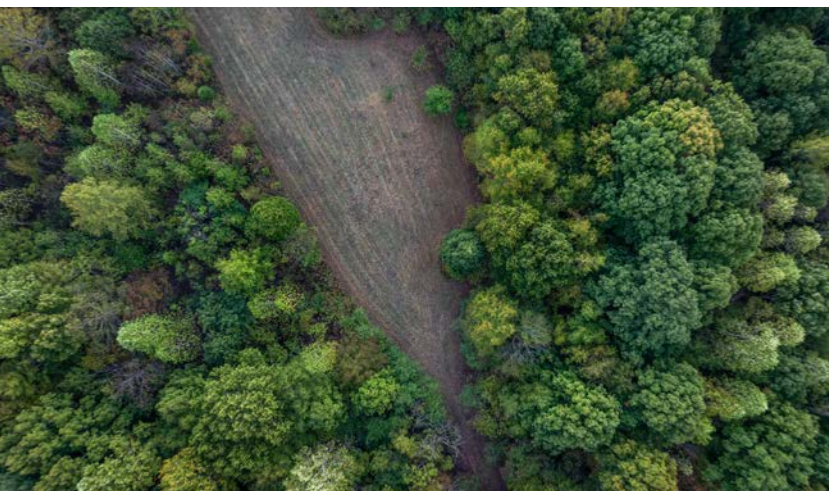
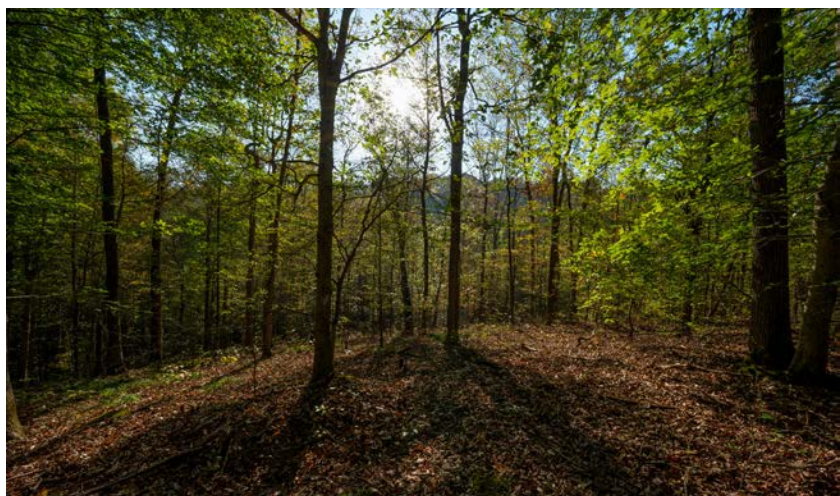
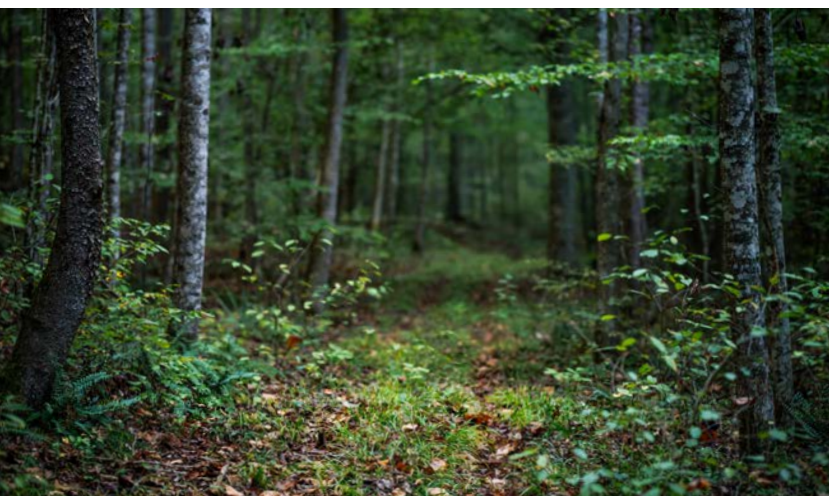
PRICE: **\$535,000** | COUNTY: **CHEATHAM** | STATE: **TENNESSEE** | ACRES: **45**

- 45 +/- acres of beautiful, versatile land
- Year-round water source from picturesque Marks Creek
- Thousands of dollars in harvestable timber, adding investment value
- Thriving deer and turkey population, perfect for wildlife enthusiasts and hunters
- Multiple build site locations, ideal for your dream home or a private retreat
- Small chestnut tree orchard
- Greenbelt tax program eligibility, offering significant tax savings
- Convenient road access with blacktop frontage
- 30 minutes from Downtown Nashville, TN
- 45 minutes to Clarksville, TN

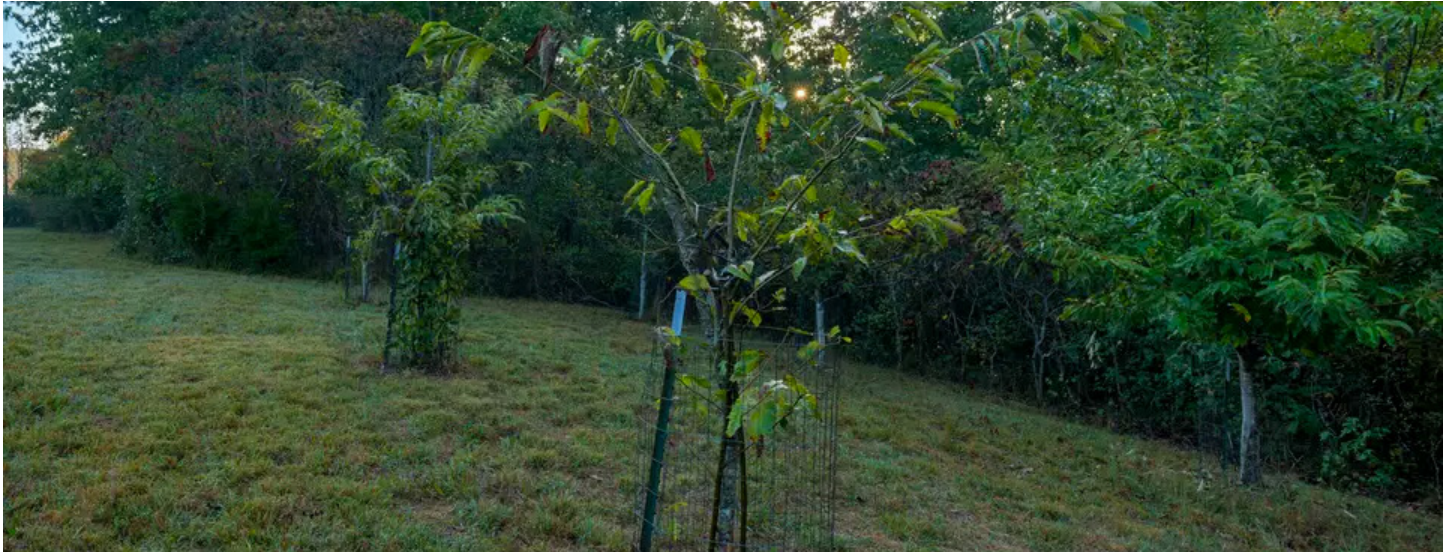


42 +/- ACRES OF MATURE TIMBER

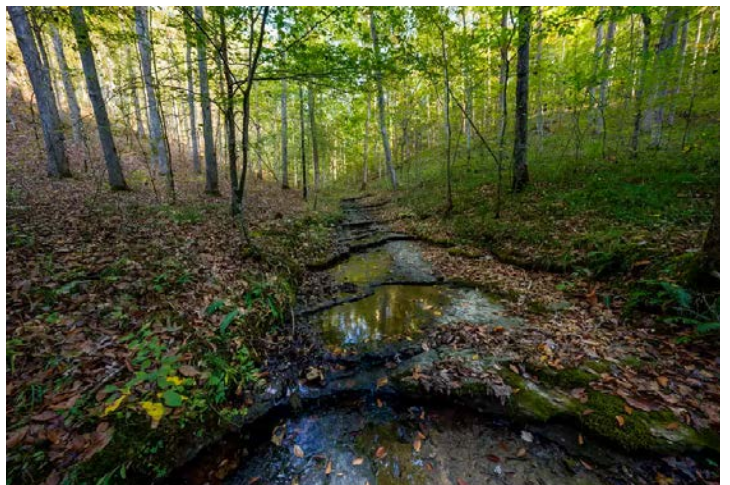
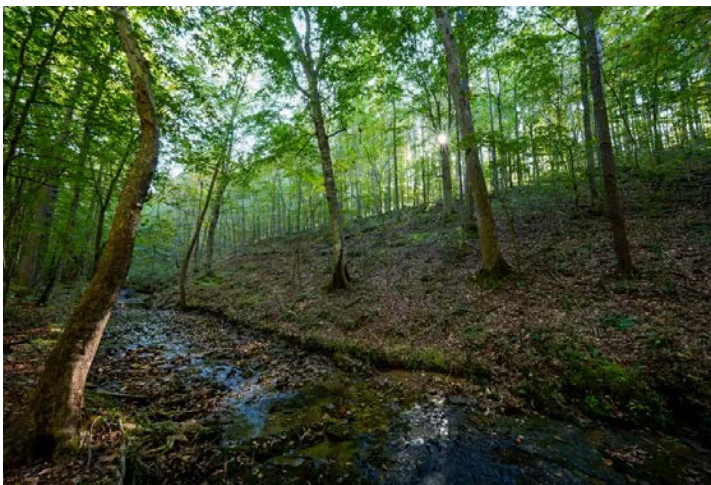
It has 42 +/- acres of mature hardwoods offering an ideal mix of natural beauty, investment potential, and convenience.



SMALL CHESTNUT TREE ORCHARD



MARKS CREEK

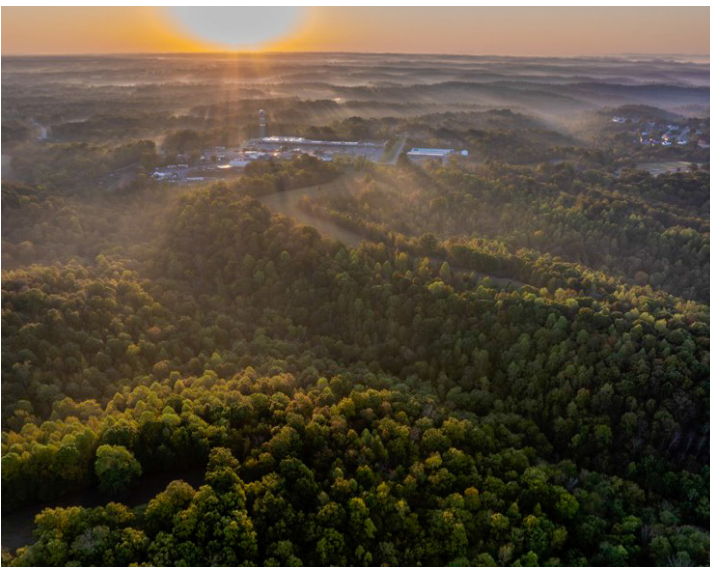


HUNTING OPPORTUNITIES

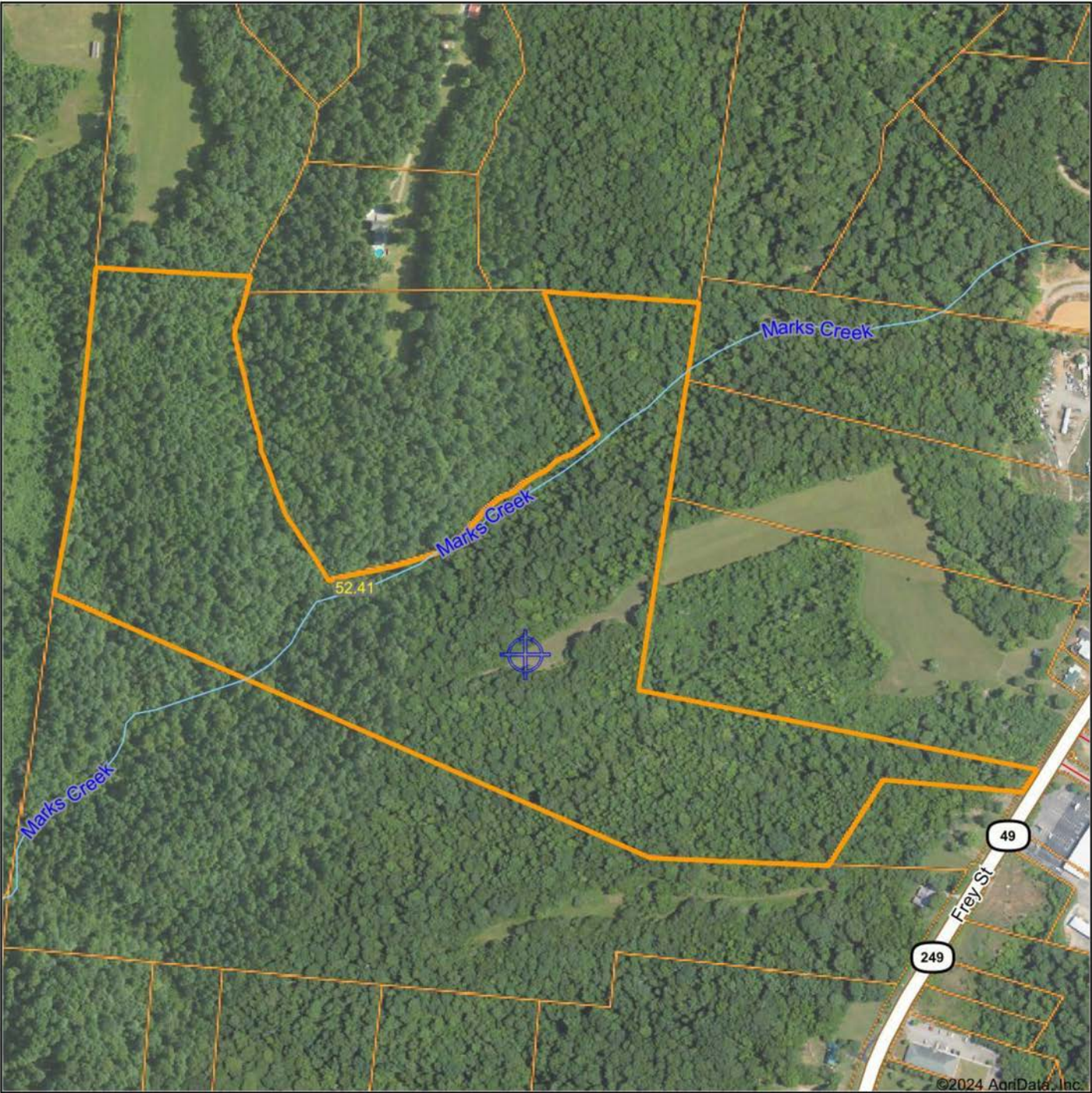
This property combines rural tranquility with easy access to city amenities, making it perfect for building on, a hunting paradise for an outdoorsman, or a great investment.



ADDITIONAL PHOTOS



AERIAL MAP



©2024 AgriData, Inc.

Boundary Center: 36° 17' 52.32, -87° 3' 19.67

0ft 499ft 997ft



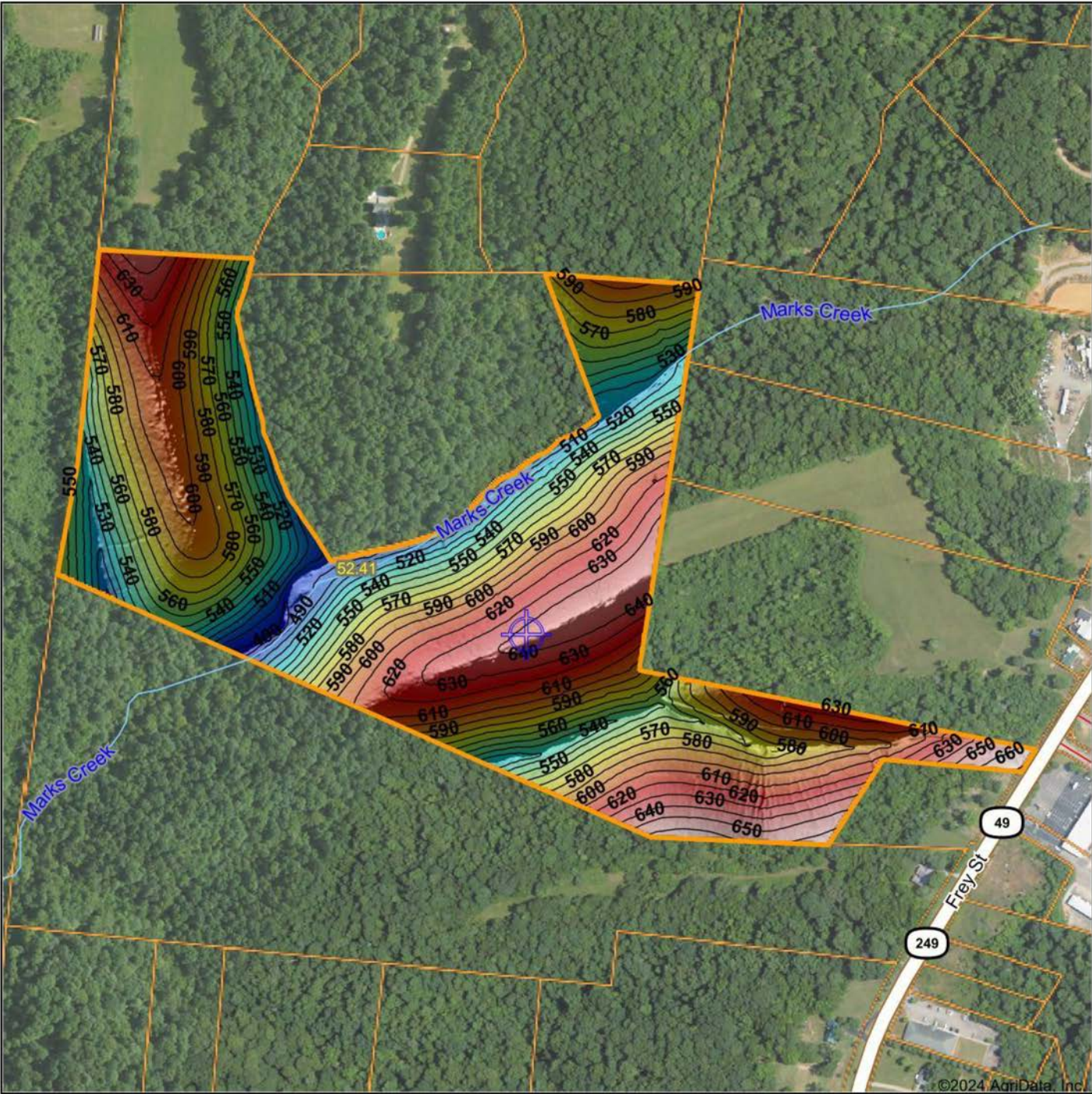
Maps Provided By:
surety
CUSTOMIZED ONLINE MAPPING
© AgriData, Inc. 2023 www.AgriDataInc.com

**Cheatham County
Tennessee**



9/25/2024

HILLSHADE MAP



Low Elevation High

Source: USGS 1 meter dem

Interval(ft): 10

Min: 475.8

Max: 671.7

Range: 195.9

Average: 582.2

Standard Deviation: 41.14 ft

0ft 502ft 1003ft

9/25/2024

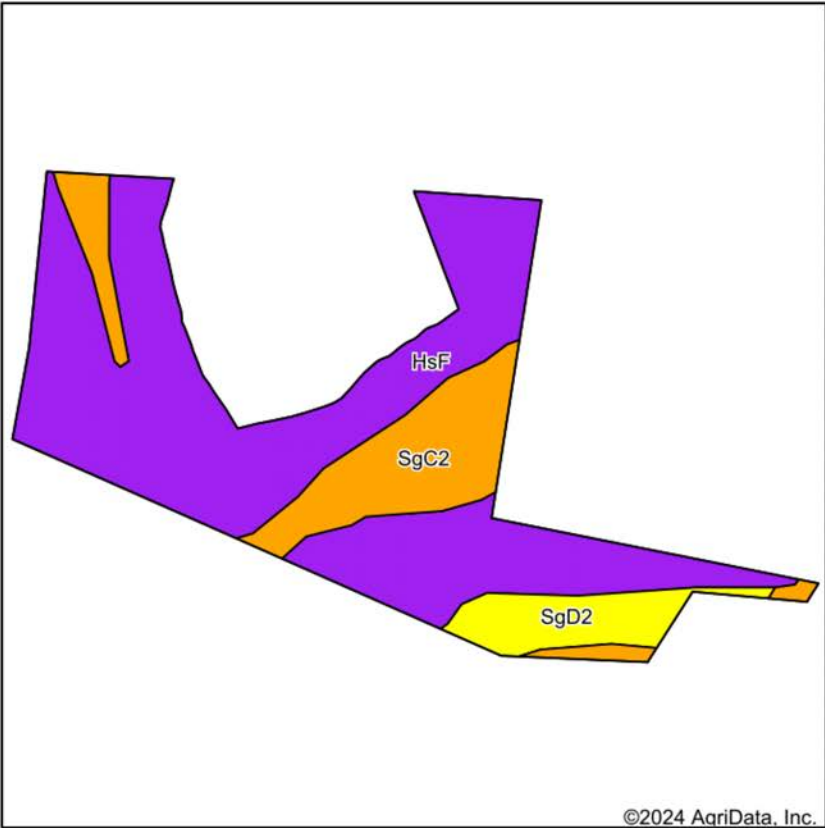
Cheatham County
Tennessee

Boundary Center: 36° 17' 52.32, -87° 3' 19.67

Maps Provided By:

surety
CUSTOMIZED ONLINE MAPPING
© AgriData, Inc. 2023 www.AgriDataInc.com

SOILS MAP



Soils data provided by USDA and NRCS.



State: **Tennessee**
County: **Cheatham**
Location: **36° 17' 52.95, -87° 3' 19.67**
Township: **Ashland City**
Acres: **52.46**
Date: **9/25/2024**



Maps Provided By:

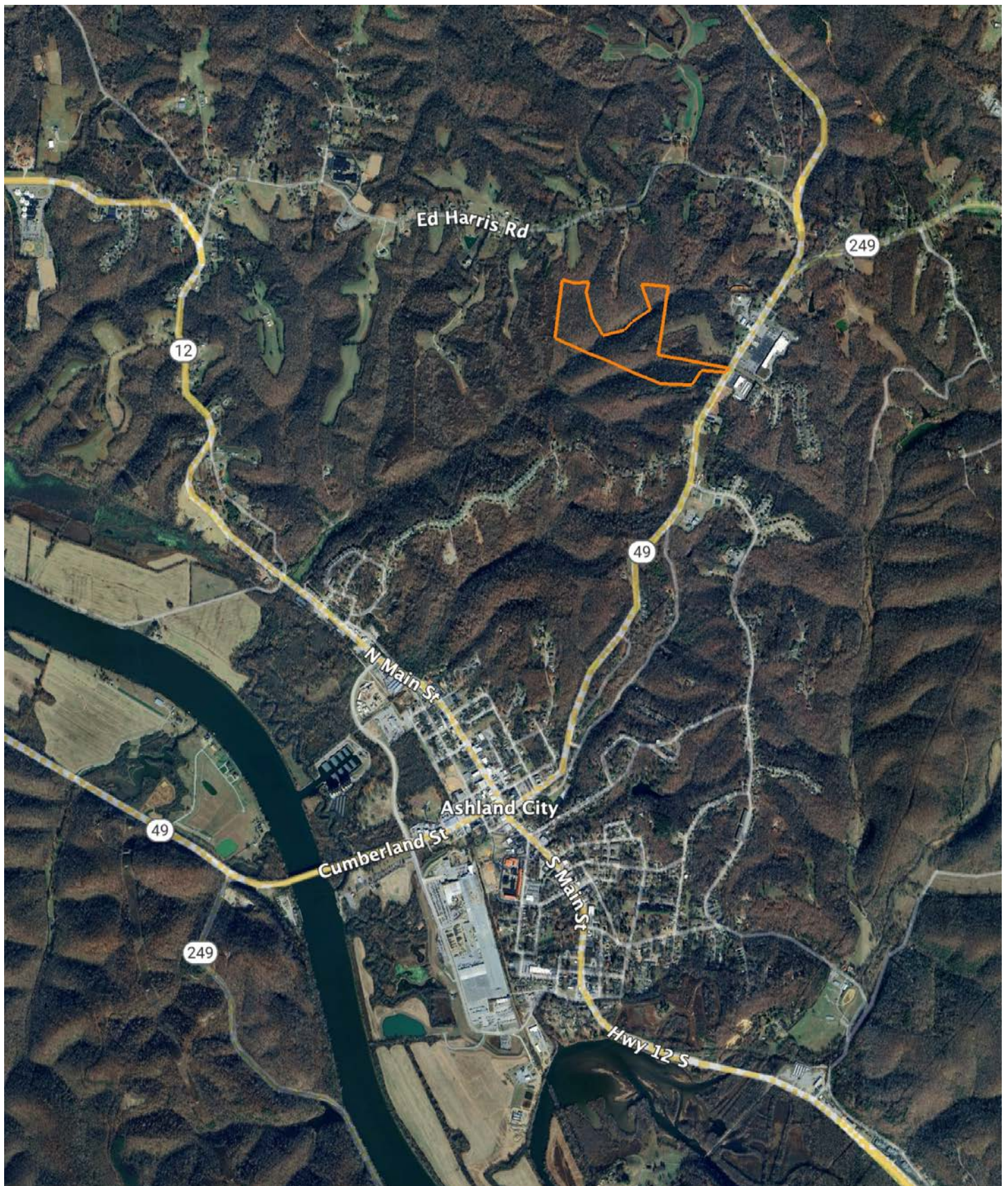


Area Symbol: TN021, Soil Area Version: 17											
Code	Soil Description	Acres	Percent of field	Non-Irr Class Legend	Restrictive Layer	Non-Irr Class *c	*n NCCPI Overall	*n NCCPI Corn	*n NCCPI Small Grains	*n NCCPI Soybeans	*n NCCPI Cotton
HsF	Hawthorne-Sulphura association, 20 to 60 percent slopes	37.49	71.4%		2.7ft. (Paralithic bedrock)	Vlls	10	9	9	3	8
SgC2	Sengtown gravelly silt loam, 5 to 12 percent slopes	10.58	20.2%		> 6.5ft.	Ille	70	61	52	50	70
SgD2	Sengtown gravelly silt loam, 12 to 20 percent slopes	4.39	8.4%		> 6.5ft.	IVe	64	56	47	44	64
Weighted Average						5.94	*n 26.6	*n 23.4	*n 20.9	*n 15.9	*n 25.2

*n: The aggregation method is "Weighted Average using all components"

*c: Using Capabilities Class Dominant Condition Aggregation Method

OVERVIEW MAP



AGENT CONTACT

Originally from Orlando, Florida, Reagan's journey into land sales was influenced by his upbringing and education. He attended Faith Academy High School in Marble Falls, Texas, and went on to study Business Management at the Rawls College of Business, Texas Tech University. Currently residing in Hermitage, Tennessee, Reagan brings a unique blend of professional expertise and personal passion to his role. This strong educational background laid the foundation for his successful career in management at Amazon, where he honed his communication and organizational skills.

Reagan's deep-rooted connection to land and rural property stems from his early experiences in bow hunting and rifle hunting on his father's lease in Texas, as well as farms in Southern Iowa, Northern Missouri, and Western Kentucky. His lifelong involvement in farming and ranching, coupled with his active participation in the Future Farmers of America (FFA) during high school, has instilled in him a profound appreciation for the outdoors. His expertise in developing farms for whitetail and turkey hunting, gained from years of hands-on experience turning farms into wildlife paradises, sets him apart in the field.

Reagan's transition from a corporate career to land sales was driven by his unwavering passion for America's heartland. His "burn the ships" mentality ensures that he approaches every client interaction with 100% dedication. With Reagan Hanish, clients can trust they are working with someone who not only understands land values but is deeply passionate about helping them achieve their property goals.



REAGAN HANISH

LAND AGENT

615.588.7120

RHanish@MidwestLandGroup.com



MidwestLandGroup.com

This property is being offered by Midwest Land Group, LLC. 913.674.8010. All information provided by Midwest Land Group, LLC or their agents was acquired from sources deemed accurate and reliable, however we do not warrant its accuracy or completeness. Midwest Land Group, LLC assumes no liability for error, omission or investment results. Midwest Land Group, LLC. Licensed in Arkansas, Illinois, Iowa, Kansas, Minnesota, Missouri, Nebraska, Oklahoma, South Dakota, Tennessee, Texas, Wisconsin, and Wyoming.