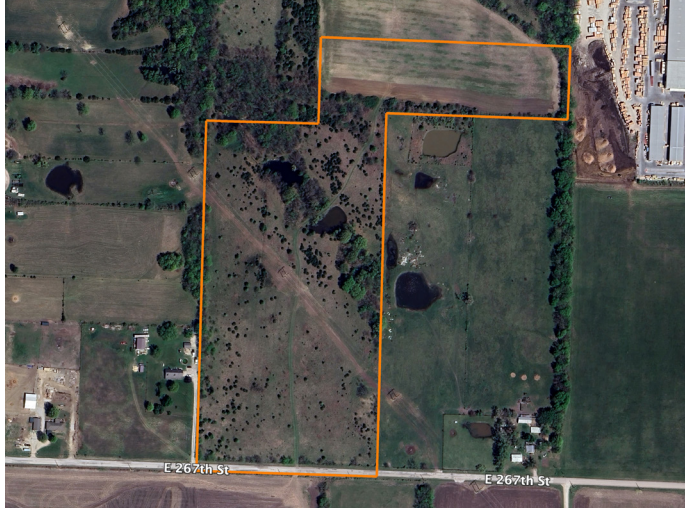


LAND FOR SALE

BEAUTIFUL HOMESITES AND RECREATION ON THE EDGE OF HARRISONVILLE



PROPERTY FEATURES

- Open and wooded mix
- Homesites
- Ponds
- Utilities at the road
- Outside city limits
- Hunting & recreation
- Blacktop frontage
- Harrisonville Schools
- Less than 30 minutes from Kansas City
- Additional acreage available



For more information, contact:

BEN EWBANK, Land Broker

816.820.2345 | BEwbank@MidwestLandGroup.com

MidwestLandGroup.com BUYERS, SELLERS, AND LAND – CONNECTED

Midwest Land Group, LLC, 913.674.8010, Licensed in AK, IL, IA, KS, KY, LA, MN, MO, MS, NE, OH, OK, SD, TE, TX, WI, and WY.



PRICE: **\$299,000**

COUNTY: **CASS**

STATE: **MISSOURI**

ACRES: **26**

