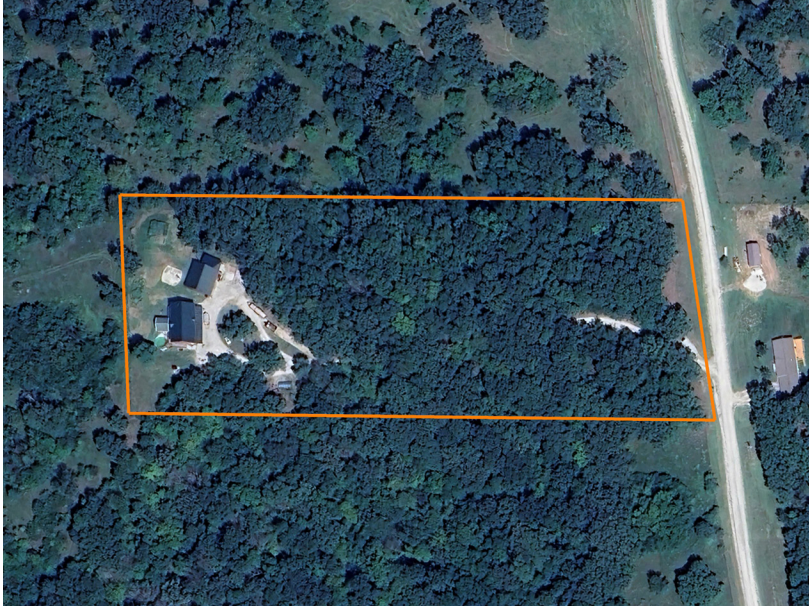


LAND FOR SALE

LARGE SECLUDED CUSTOM HOME ON 6 +/- ACRES

PRICE: **\$489,500**
COUNTY: **ADAIR**
STATE: **MISSOURI**
ACRES: **6**



PROPERTY FEATURES

- 4,230 sq. ft. home
- 6 bedrooms
- 3 ½ bathrooms
- Bonus room with bar
- Walkout basement
- 1,296 sq. ft. detached garage
- Massive amounts of storage
- Privacy
- Greenhouse
- 6.5 miles from Kirksville



For more information, contact:

BRAD PRATER, Land Agent

660.236.4281 | BPrater@MidwestLandGroup.com

MidwestLandGroup.com

This property is being offered by Midwest Land Group, LLC, 7111 W. 151st Street, Ste. 27, Overland Park, KS 66223, 913.674.8010. Licensed in AR, IL, IA, KS, KY, LA, MN, MS, MO, MT, NE, OH, OK, SD, TN, TX, WI, and WY.

