

MIDWEST LAND GROUP PRESENTS

799 ACRES IN

STONE COUNTY MISSOURI



MidwestLandGroup.com

MIDWEST LAND GROUP IS HONORED TO PRESENT

799 +/- ACRES ON TABLE ROCK LAKE WITH DOCK ZONING

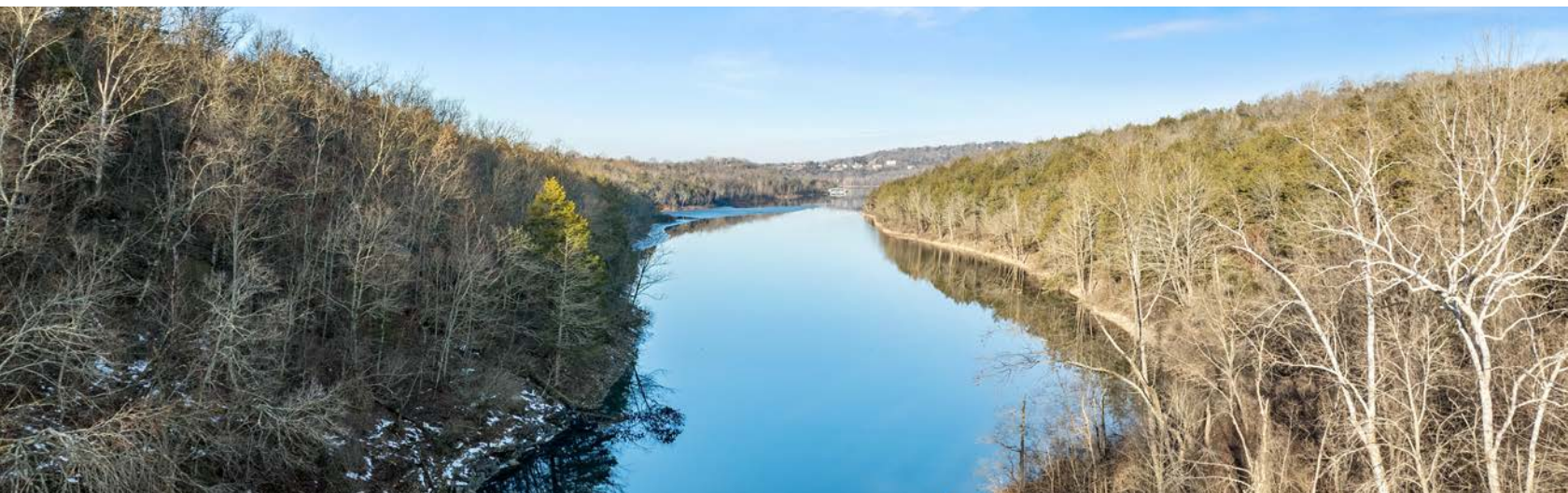
This extraordinary 799 +/- acre property on Table Rock Lake offers an unparalleled blend of beauty, outdoor recreation, and investment potential. With over 10 miles of established trail systems, this land is a dream for hunters, outdoor enthusiasts, and conservationists alike. Two main ridge systems provide a breathtaking park-like setting with unparalleled lake views, while rare dock zoning makes this one of the most exclusive lakefront properties ever to be made available.

The land offers an obvious care for wildlife, manicured and shaped over time by the current owners. The work that has taken place on this property is unmatched, featuring new food plot locations, hunting blinds, mature hardwood savannas, clearings, and towering oaks that create an incredible habitat for deer, turkey, and other native species. Numerous ponds, springs, and creeks weave throughout the property, enhancing both its diversity and functionality. Manicured open ridge tops

provide incredible building sites and scenic overlooks, perfect for enjoying the Ozark landscape.

Infrastructure is in place with electricity in place, a well and well house, and dual access points off State Highway Y offering one of the most secluded, picturesque building sites on the lake. A conservation easement on only one of the parcels also ensures that some of it remains protected while still allowing for responsible use and building a structure. Located just 30 minutes from Branson, this property offers both seclusion and convenience, making it an excellent option for a private estate, hunting retreat, or conservation-focused development.

Opportunities like this are exceptionally rare, and this is your chance to own a premier, legacy property on Table Rock Lake. Contact us today for a private showing!



PROPERTY FEATURES

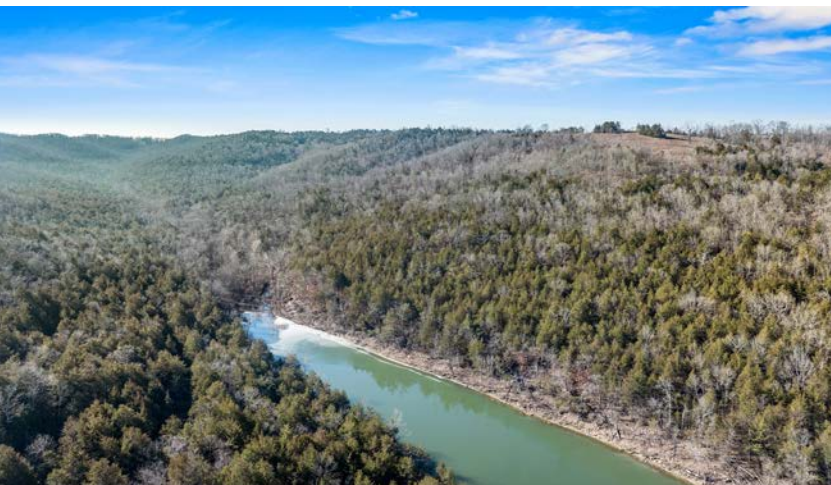
PRICE: **\$6,950,000** | COUNTY: **STONE** | STATE: **MISSOURI** | ACRES: **799**

- Lake front
- Lake view
- Dock zoning
- Highway frontage
- Manicured ridge tops
- Building sites
- Utilities in place
- 10+ miles of trails
- Mature timber
- Exceptional hunting
- Close to Branson and Cape Fair



LAKE FRONT

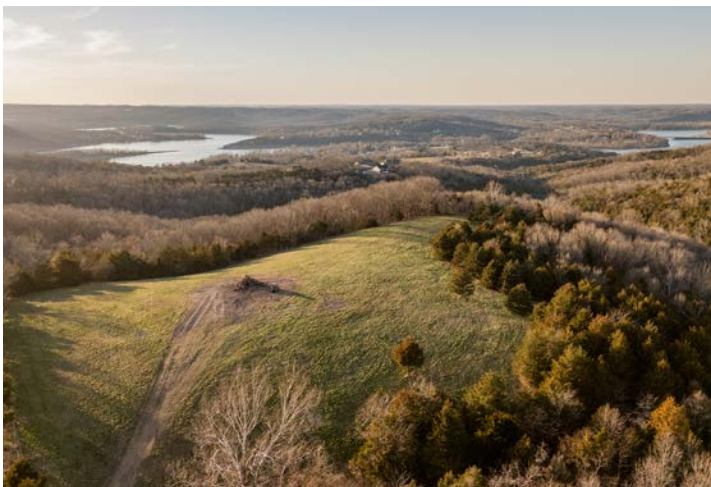
Opportunities like this are exceptionally rare, and this is your chance to own a premier, legacy property on Table Rock Lake.



DOCK ZONING

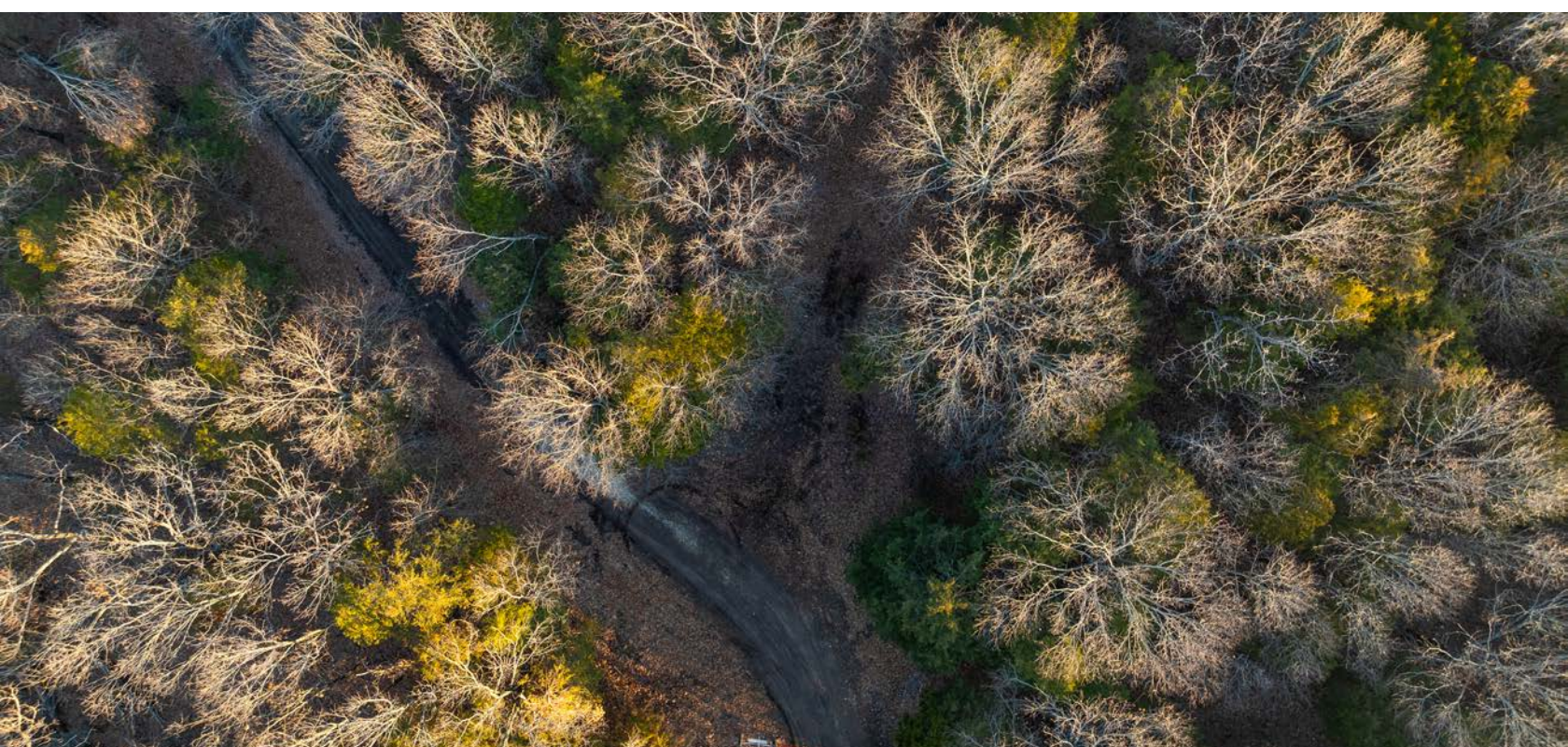


MANICURED RIDGE TOPS

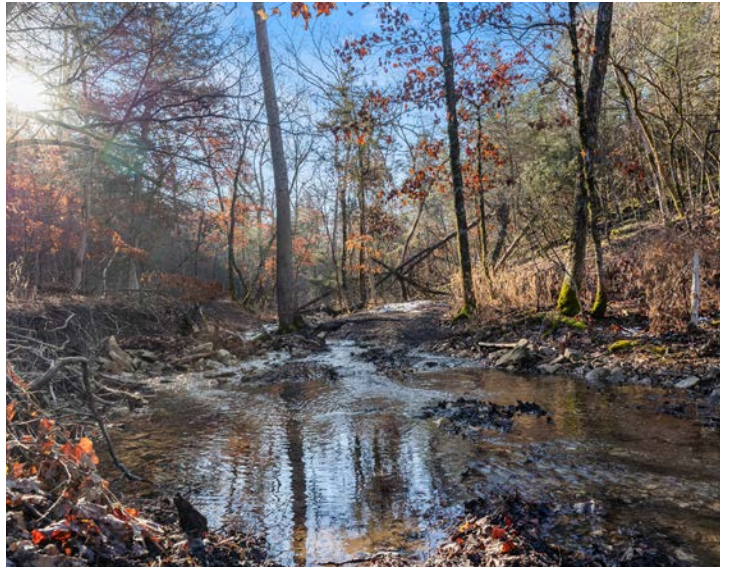


10+ MILES OF TRAILS

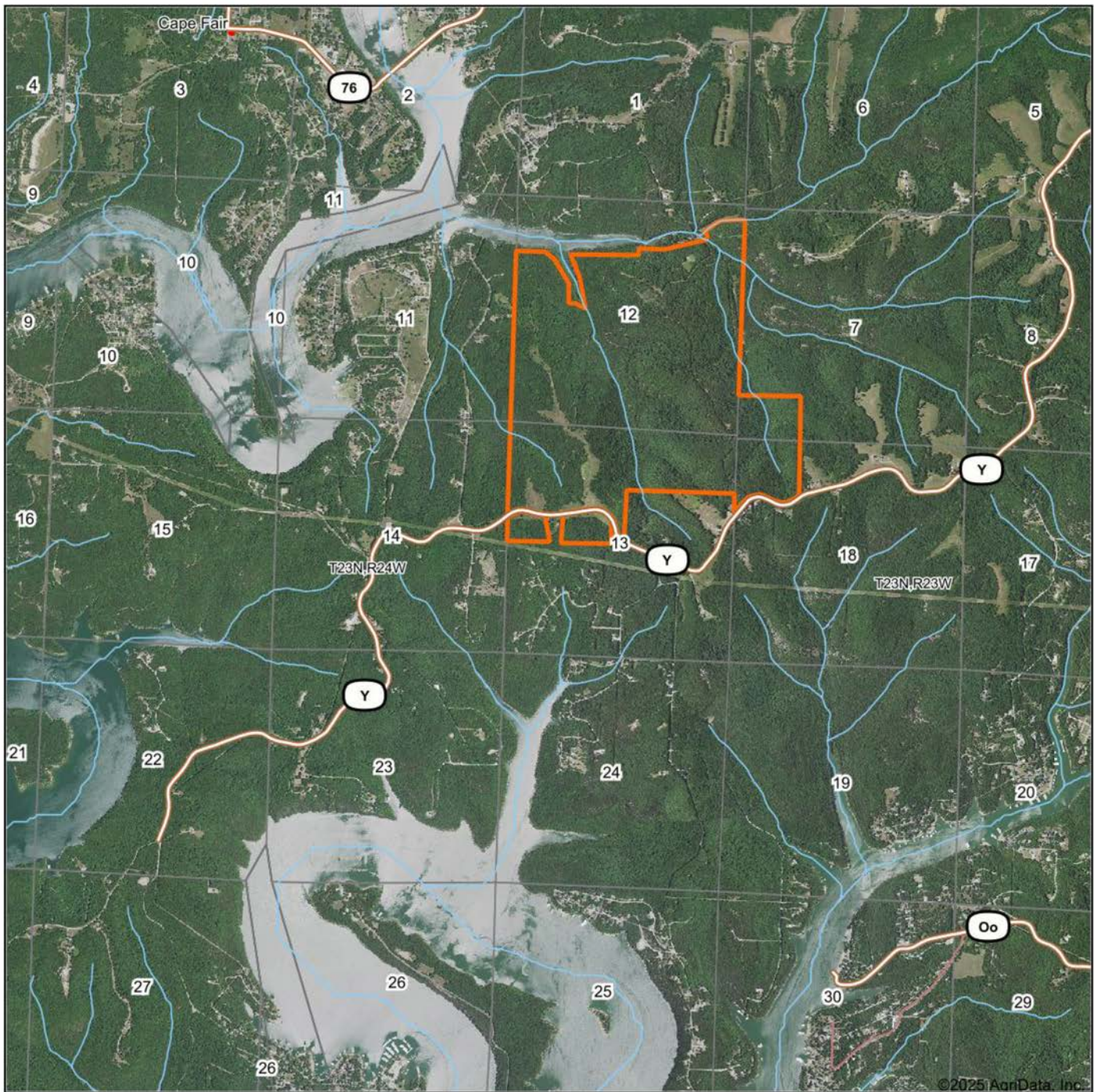
With over 10 miles of established trail systems, this land is a dream for hunters, outdoor enthusiasts, and conservationists alike.



ADDITIONAL PHOTOS



AERIAL MAP



©2025 AgriData, Inc.



Maps Provided By:



© AgriData, Inc. 2023

www.AgriDataInc.com

Boundary Center: 36° 42' 29.31, -93° 28' 37.07

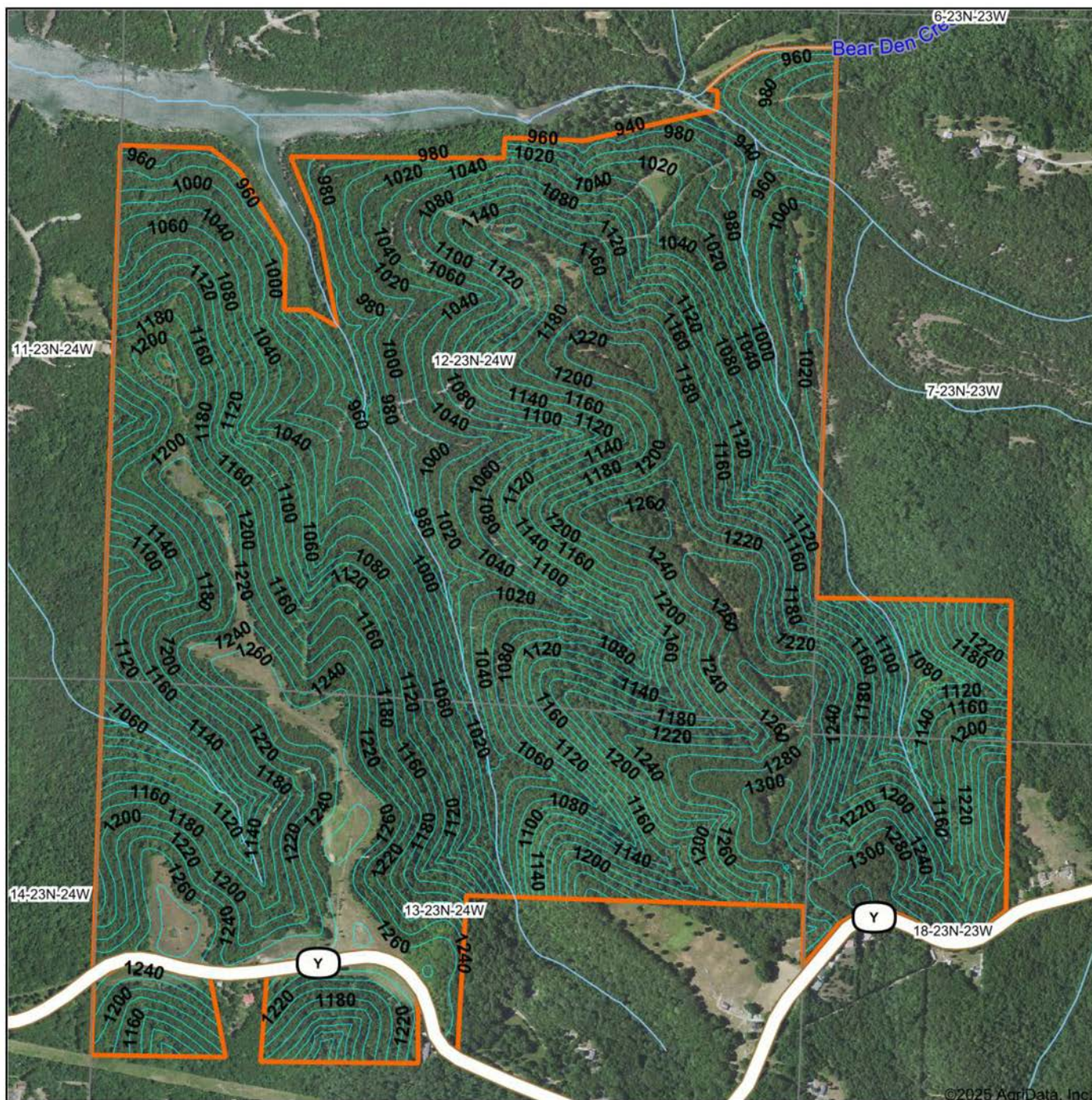
12-23N-24W
Stone County
Missouri

0ft 3538ft 7077ft



2/27/2025

TOPOGRAPHY MAP



Maps Provided By:



© AgriData, Inc. 2023

www.AgrIDataInc.com

Source: USGS 3 meter dem

Interval(ft): 20.0

Min: 923.6

Max: 1,322.4

Range: 398.8

Average: 1,137.0

Standard Deviation: 95.31 ft

0ft 1136ft 2273ft

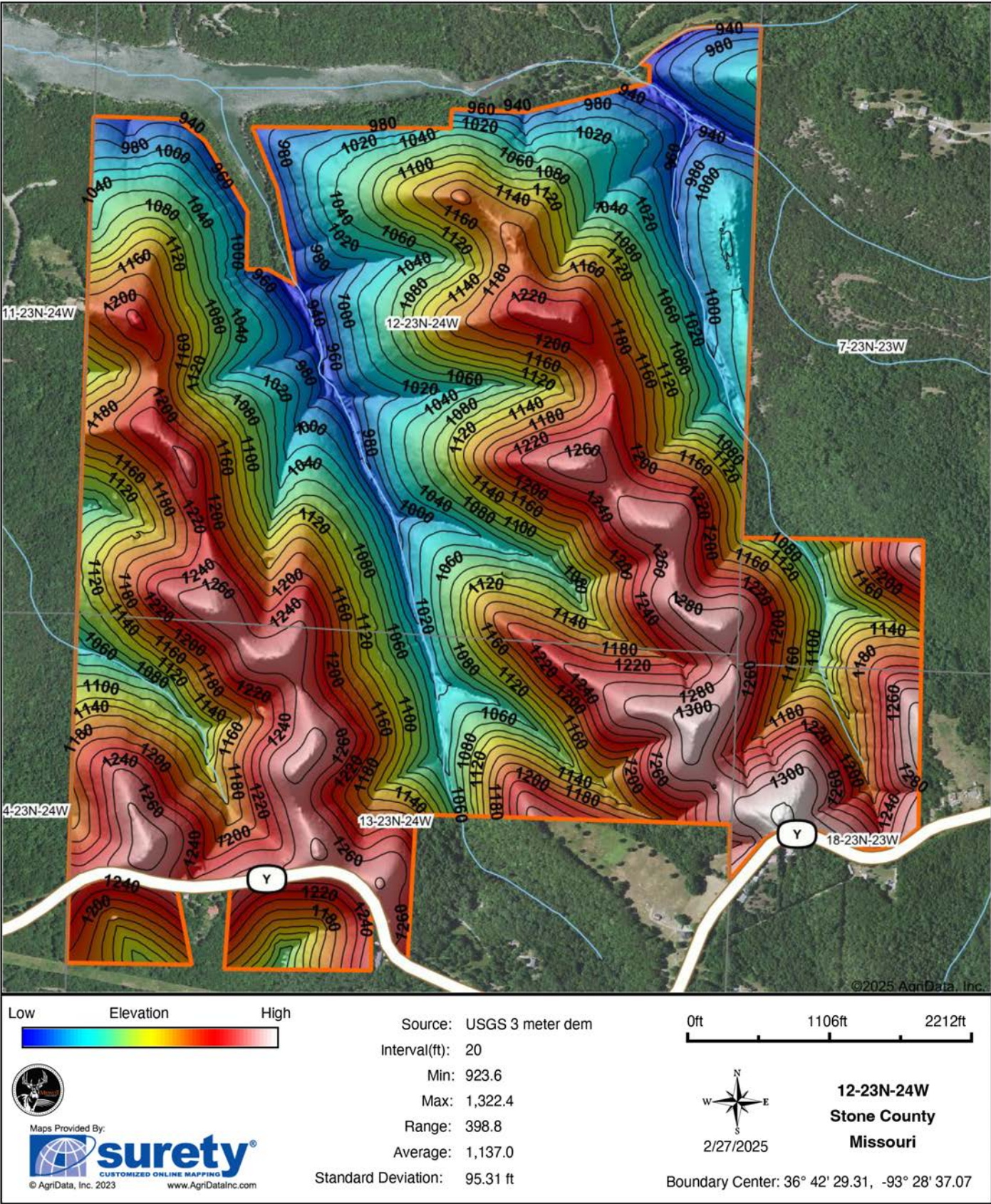


2/27/2025

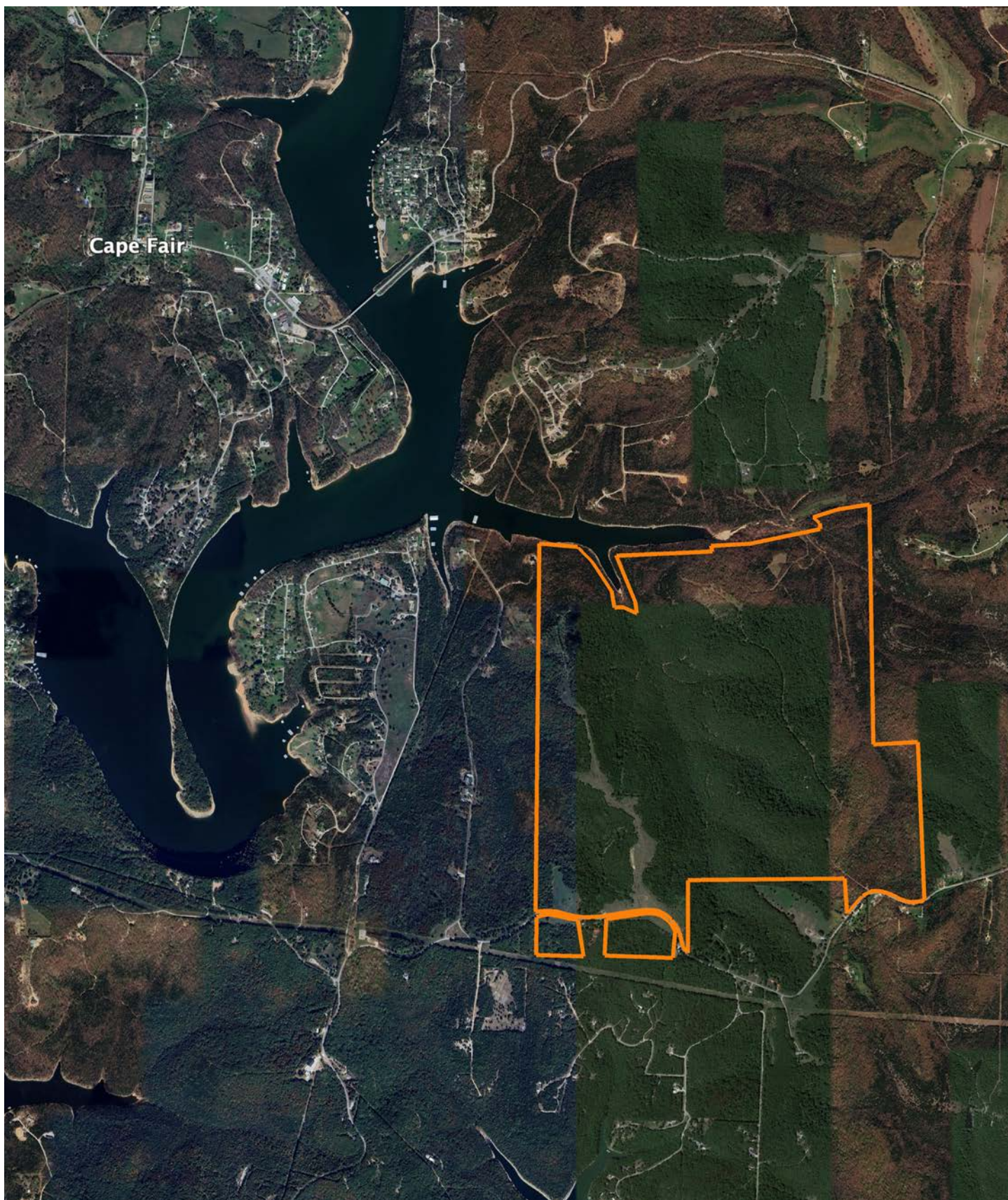
12-23N-24W
Stone County
Missouri

Boundary Center: 36° 42' 29.31, -93° 28' 37.07

HILLSHADE MAP



OVERVIEW MAP



AGENT CONTACT

Looking for land or selling a piece of property can be stressful or overbearing, but not if you're working with the right agent. Bjorn Wilkerson is all about making sure each client has an enjoyable experience from start to finish. A lifelong lover of the outdoors, Bjorn has a background in agriculture and a passion for all things outdoors. This includes hunting, fishing, camping, traveling, hiking, and land management, not to mention his personal favorites: spring turkey hunting, whitetail hunting, and bowfishing. Born in West Plains, Missouri, Bjorn attended Couch High School and graduated from Missouri State University—Springfield with a degree in Wildlife Management. Before coming to Midwest Land Group, he worked in agriculture and operations with Archer Daniels Midland (ADM), a human and animal nutrition company specializing in agricultural origination and processing, where he worked his way around the company, serving in a variety of positions, everything from trainee, plant manager, and recruiter to new manager development specialist and continuous improvement practitioner. Being a service to someone looking for hunting or farming property is what drives Bjorn. He wants each experience to not only be enjoyable, but seamless as well. If you're in the market to sell or buy land, give Bjorn a call.



BJORN WILKERSON,
LAND AGENT

417.233.1243

BWilkerson@MidwestLandGroup.com



MidwestLandGroup.com

This property is being offered by Midwest Land Group, LLC. 913.674.8010. All information provided by Midwest Land Group, LLC or their agents was acquired from sources deemed accurate and reliable, however we do not warrant its accuracy or completeness. Midwest Land Group, LLC assumes no liability for error, omission or investment results. Midwest Land Group, LLC. Licensed in Arkansas, Illinois, Iowa, Kansas, Minnesota, Missouri, Nebraska, Oklahoma, South Dakota, Tennessee, Texas, Wisconsin, and Wyoming.