

MIDWEST LAND GROUP PRESENTS

94 ACRES IN

SCOTT COUNTY ARKANSAS

29162 EAST HIGHWAY 28, HARVEY, AR, 72841



MidwestLandGroup.com

MIDWEST LAND GROUP IS HONORED TO PRESENT

SCOTT COUNTY HOMESTEAD WITH GREAT VIEWS AND NATIONAL FOREST BOUNDARY

Located in rural Scott County adjoining the Ouachita National Forest, this 94 +/- acre homestead is perfect for a farm or a recreational property! The 94 +/- acres sprawls across mostly flat and gently rolling terrain, with the majority of its acreage being in pasture. The fenced and productive pasture is broken up by strips of woods and seasonal creeks flowing through the property to the nearby Fourche LaFave River. The pasture has been used for grazing cattle and hay production, as well as deer and turkey hunting. Water lines for water troughs have been run throughout the property, and are in place for additional cross-fencing to be added to the farm. A large open-span hay barn is located just down the hill from the property, giving ample storage for hay and equipment.

The stylishly renovated farmhouse sits atop a small hill facing the mountains to the south. The panoramic views of the Ouachita Mountain range that are offered from the front porch are nothing short of first-class. Inside you'll find a cozy living space accompanied by three bedrooms and one bathroom. This home is move-in ready and is even wired with fiber optic internet.

This farm is located just minutes away from the Fourche LaFave River, only thirty minutes from Waldron, and just under one hour from Mena. Whether you are looking for a homestead, a cattle farm, or a place to get away from the hustle and bustle, this great Scott County property checks a lot of boxes. Call today to schedule your tour!



PROPERTY FEATURES

PRICE: **\$360,000** | COUNTY: **SCOTT** | STATE: **ARKANSAS** | ACRES: **94**

- 94 +/- acres
- Ouachita National Forest boundary
- Fenced pasture
- Hay barn
- Stylish farmhouse
- Three bed, one bath
- Great mountain views from the front porch
- Seasonal creek
- Fourche LaFave River nearby
- Well
- Two ponds
- Waterlines ran for multiple water troughs on property
- Highway 28 frontage
- Fiber optic internet
- 30 minutes from Waldron
- 55 minutes from Mena



THREE BED, ONE BATH FARMHOUSE



HAY BARN



FENCED PASTURE



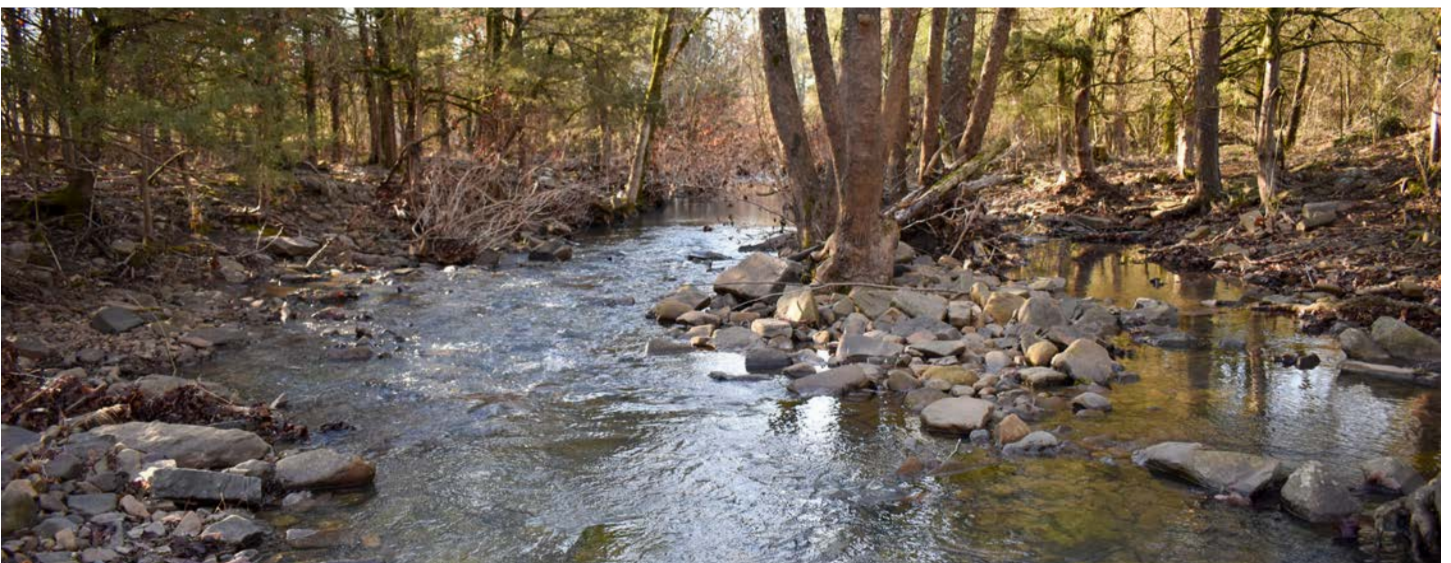
OUACHITA NATIONAL FOREST BOUNDARY



TWO PONDS



SEASONAL CREEK



ADDITIONAL PHOTOS



AERIAL MAP



Boundary Center: 34° 52' 21.25, -93° 45' 23.84

0ft 634ft 1268ft



Maps Provided By:



© AgriData, Inc. 2023

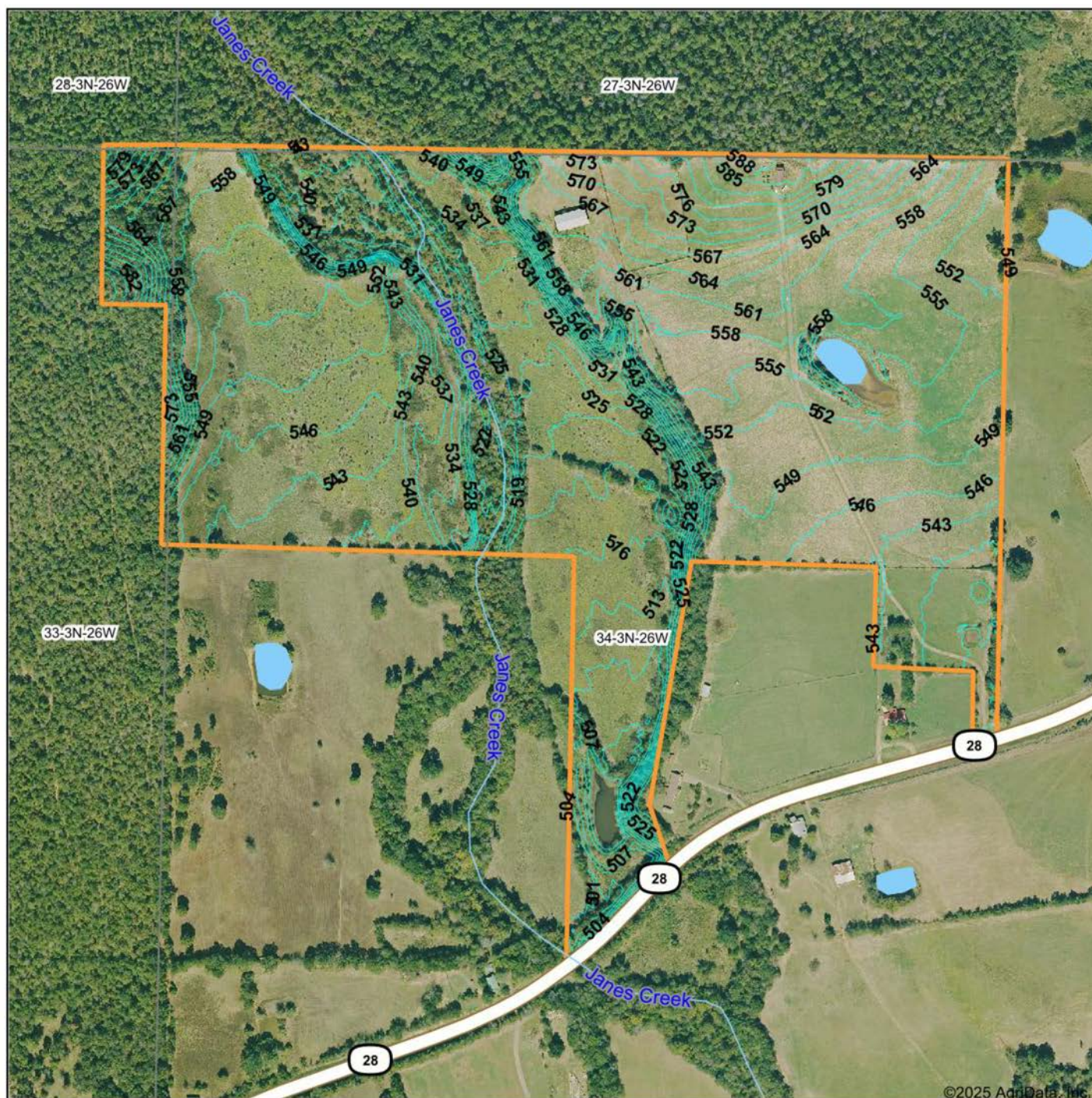
www.AgriDataInc.com

34-3N-26W
Scott County
Arkansas



3/23/2025

TOPOGRAPHY MAP



©2025 AgriData, Inc.



Maps Provided By:



© AgriData, Inc. 2023

www.AgriDataInc.com

Source: USGS 1 meter dem

Interval(ft): 3.0

Min: 494.1

Max: 591.4

Range: 97.3

Average: 544.6

Standard Deviation: 18.01 ft

0ft 498ft 996ft

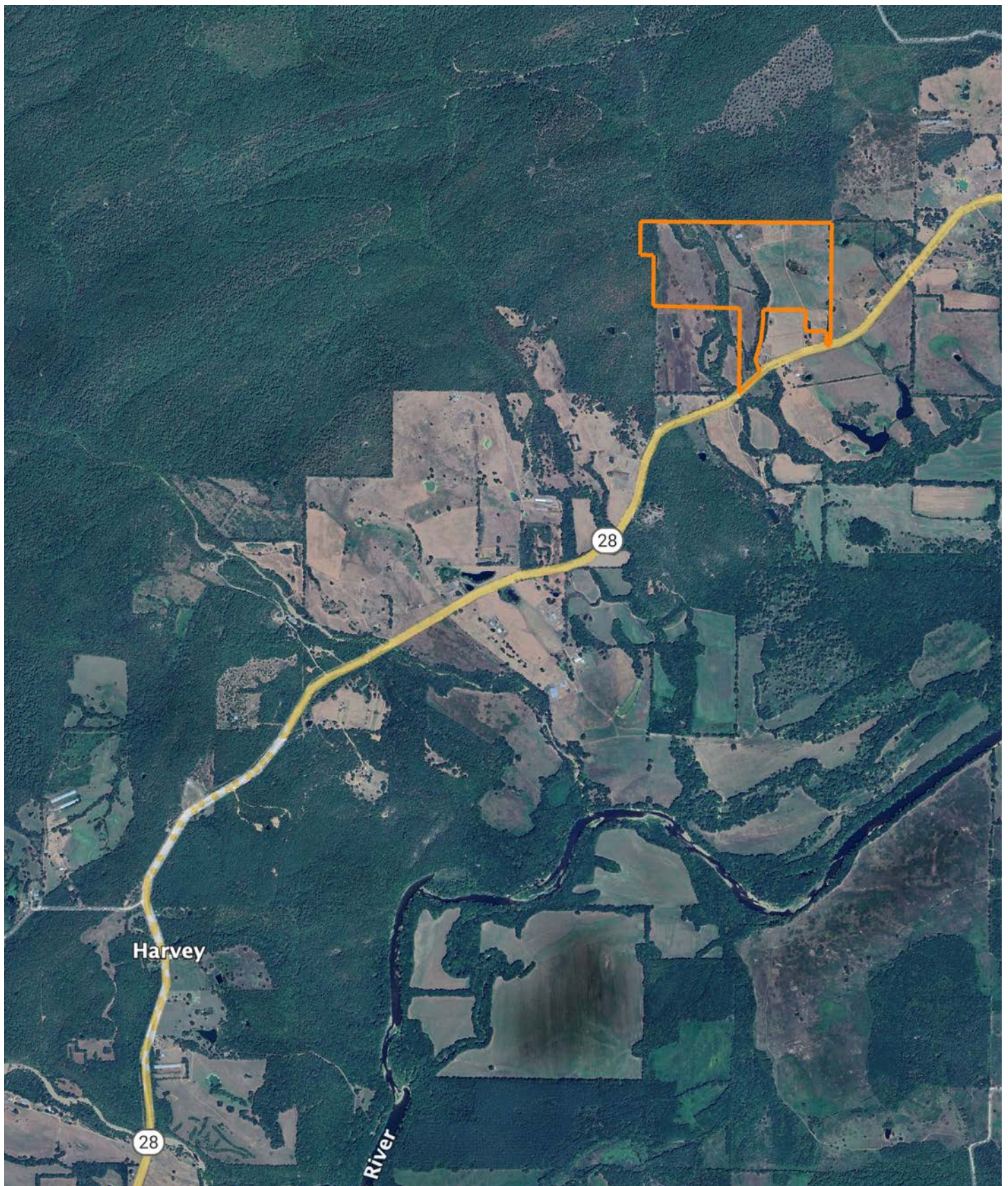


3/23/2025

34-3N-26W
Scott County
Arkansas

Boundary Center: 34° 52' 21.25, -93° 45' 23.84

OVERVIEW MAP



AGENT CONTACT

Jake Fowler has a love for agriculture. Between his formal education and lifetime of experience with cattle, horses, and poultry, he has a deep understanding of farming operations and how to maximize the efficiency of land. He knows the animals that can be raised in different areas, that soil and grass quality can make all the difference, and that location is integral to a farm's success. Jake has traveled all over western Arkansas and the River Valley area, gaining knowledge and contacts in the cattle, hay, horse, poultry, and timber industries. Born in Russellville, Arkansas, Jake went to Western Yell County High School in Havana, Arkansas, and Connors State College in Warner, Oklahoma, where he graduated cum laude. Before coming to Midwest Land Group, Jake pursued a career in logistics and land management.

Since joining Midwest Land Group, Jake has worked across western Arkansas and the Arkansas River Valley assisting clients with buying and selling cattle farms, estates, homes on acreage, hunting properties, timberland, and more. When he isn't busy helping clients, you can find Jake busy on the farm taking care of his land and cattle, deer hunting, turkey hunting, fishing, or team roping. Jake, his wife Lexie, and their son Wylie reside on their farm in Danville, Arkansas. Give Jake a call today to put his experience to work for you.



JAKE FOWLER, LAND AGENT
479.393.1997

JFowler@MidwestLandGroup.com



MidwestLandGroup.com

This property is being offered by Midwest Land Group, LLC. 913.674.8010. All information provided by Midwest Land Group, LLC or their agents was acquired from sources deemed accurate and reliable, however we do not warrant its accuracy or completeness. Midwest Land Group, LLC assumes no liability for error, omission or investment results. Midwest Land Group, LLC. Licensed in Arkansas, Illinois, Iowa, Kansas, Minnesota, Missouri, Nebraska, Oklahoma, South Dakota, Tennessee, Texas, Wisconsin, and Wyoming.