

# LAND FOR SALE

## BIRD HUNTER'S DREAM OUTSIDE OF LOGAN



### PROPERTY FEATURES

- 80 +/- acres
- Excellent upland bird hunting
- 74.39 acres CRP
- \$3,460 annually through 9/30/2025
- 5 +/- acres of waterways, trees, and thickets
- Surface rights only
- 3 miles south of Logan, Kansas

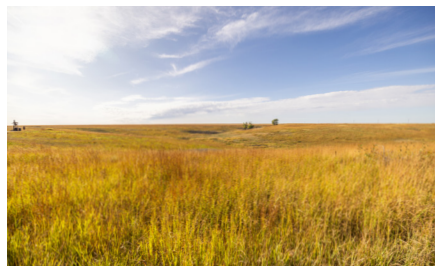
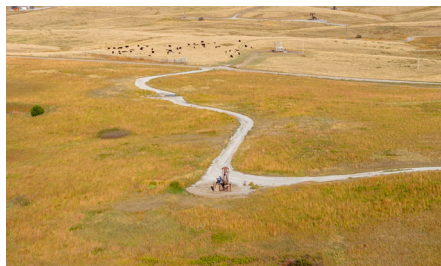
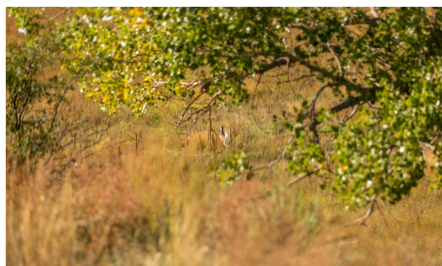
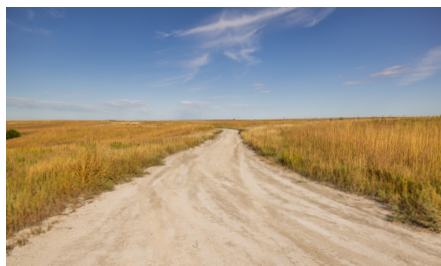


PRICE: **\$161,000**

COUNTY: **PHILLIPS**

STATE: **KANSAS**

ACRES: **80**



For more information, contact:

**COLE SCHUMACHER**, Land Agent

**785.624.2191** | [CSchumacher@MidwestLandGroup.com](mailto:CSchumacher@MidwestLandGroup.com)

**MidwestLandGroup.com**

BUYERS, SELLERS, AND LAND – CONNECTED

Midwest Land Group, LLC, 913.674.8010, Licensed in Arkansas, Illinois, Iowa, Kansas, Minnesota, Missouri, Nebraska, Oklahoma, South Dakota, Tennessee, Texas, Wisconsin, and Wyoming.

