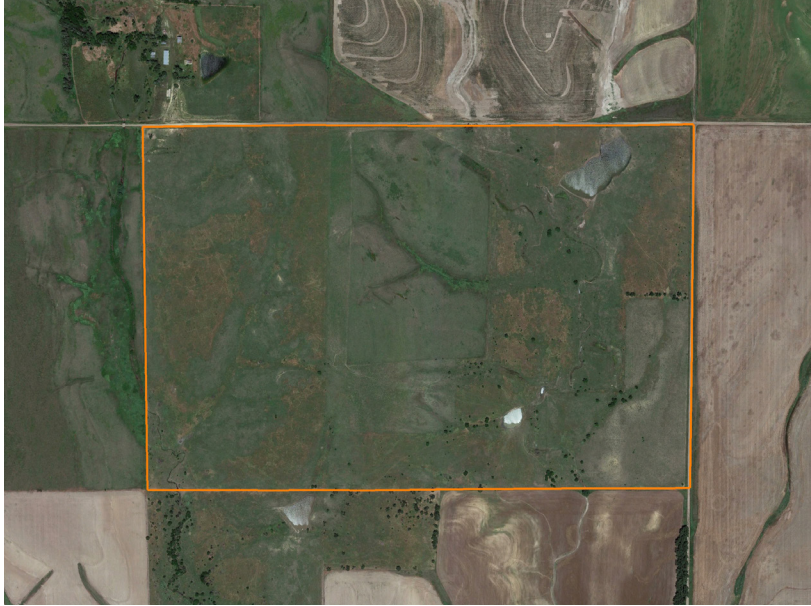


LAND FOR SALE

OSBORNE COUNTY PASTURE

PRICE: **\$409,000**
COUNTY: **OSBORNE**
STATE: **KANSAS**
ACRES: **236**



PROPERTY FEATURES

- 236 +/- acres in Osborne County, Kansas
- 35.92 +/- acres of expired CRP rented for \$1,544.56 annually for 2025
- 200.56 +/- acres of fenced grassland rented for \$3,853 for 2025
- 10 miles north of Luray, Kansas
- 17 miles north of Wilson Lake
- Ponds
- Mineral rights included
- Rural water



For more information, contact:

COLE SCHUMACHER, Land Agent

785.624.2191 | CSchumacher@MidwestLandGroup.com

MidwestLandGroup.com

