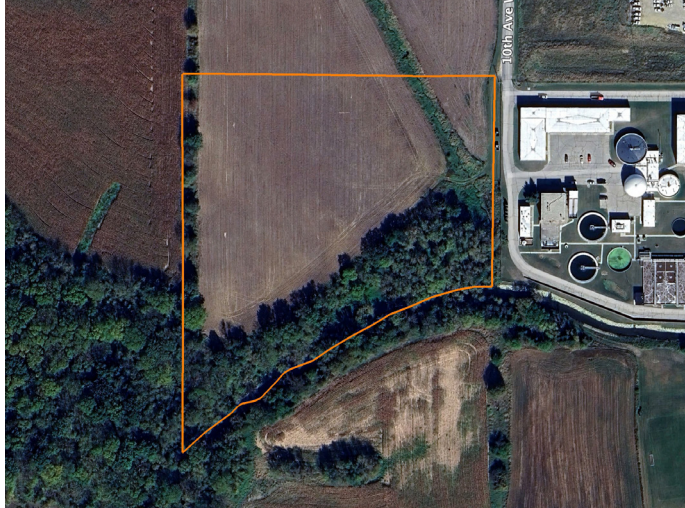


LAND FOR SALE

LOT 4 - 12.3 +/- ACRES NEAR MONROE, WISCONSIN



PROPERTY FEATURES

- 12.3 +/- acres TBD by survey
- Excellent location for development
- Zoned Highway Interchange currently
- Electric, city water, and city sewer available at the lot line
- Flat topography with good drainage
- Paved road frontage
- Access off 10th Avenue West
- Located in the Township of Monroe
- Taxes TBD due to parcel split
- 1 mile from downtown Monroe, WI



For more information, contact:

JASON HELLER, Land Broker

815.858.4403 | JHeller@MidwestLandGroup.com

MidwestLandGroup.com BUYERS, SELLERS, AND LAND – CONNECTED

Midwest Land Group, LLC, 913.674.8010, Licensed in Arkansas, Illinois, Iowa, Kansas, Minnesota, Missouri, Nebraska, Oklahoma, South Dakota, Tennessee, Texas, Wisconsin, and Wyoming.



PRICE: **\$432,600**

COUNTY: **GREEN**

STATE: **WISCONSIN**

ACRES: **12.3**

