

MIDWEST LAND GROUP PRESENTS

30 ACRES IN

CEDAR COUNTY MISSOURI



MidwestLandGroup.com

MIDWEST LAND GROUP IS HONORED TO PRESENT

30 +/- ACRES WILDLIFE HAVEN

Tucked away at the end of a quiet dead-end road, this 30 +/- acre tract offers unmatched seclusion and the natural beauty of the Ozarks. Located in northeastern Cedar County, the property features approximately 26 +/- acres of mature hardwood timber—including impressive walnut and white oak trees—and two separate grassy openings that make up the remaining 4 +/- acres.

Scenic Turkey Creek winds its way through the land, providing year-round water and excellent wildlife habitat. The fertile creek bottoms offer prime locations for food plots to attract the plentiful whitetail deer and wild turkeys that call the area home. The blend of dense timber, open glades, and flowing water makes this an ideal setting for hunting, recreation, or simply escaping into nature.

If you're looking to build, the northwest corner of the property sits on higher ground and is well-suited for a secluded home or cabin. A well has already been drilled, and electric service is located just a few hundred feet from the north property line—bringing modern convenience to your off-grid dreams.

Existing trails provide easy, quiet access throughout the property. If 30 acres isn't quite enough, Turkey Creek Conservation Area and thousands of acres of Corps of Engineers land around Stockton Lake are just a short drive away, offering additional hunting, hiking, and outdoor adventure.

Whether you're seeking a private retreat, a hunting haven, or a place to build your forever home in the woods, this Cedar County gem is a must-see.

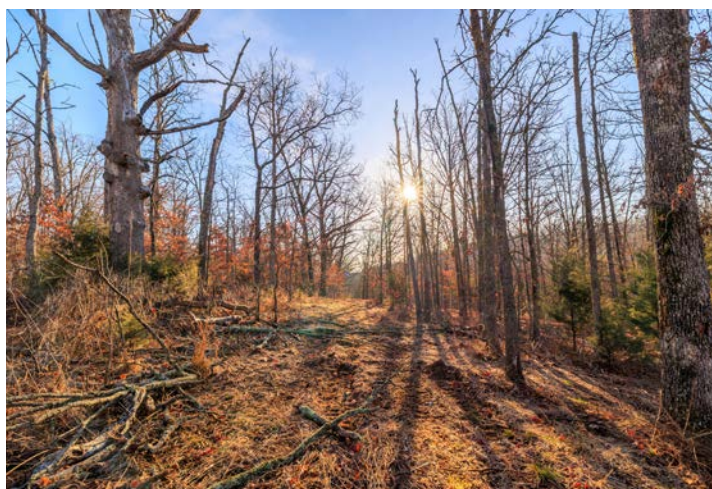
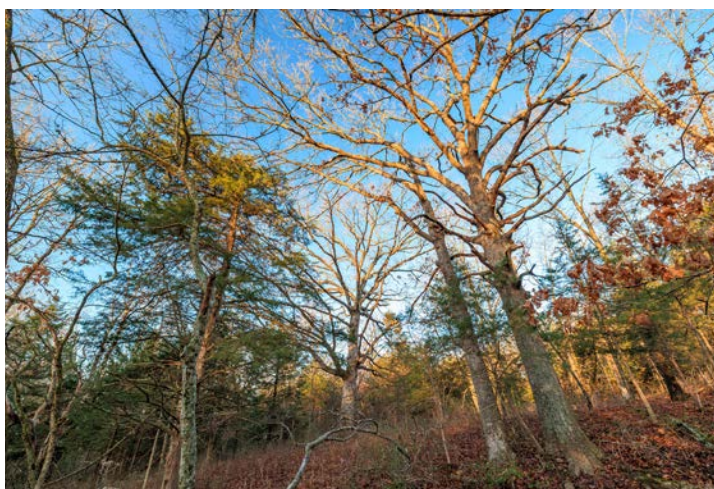
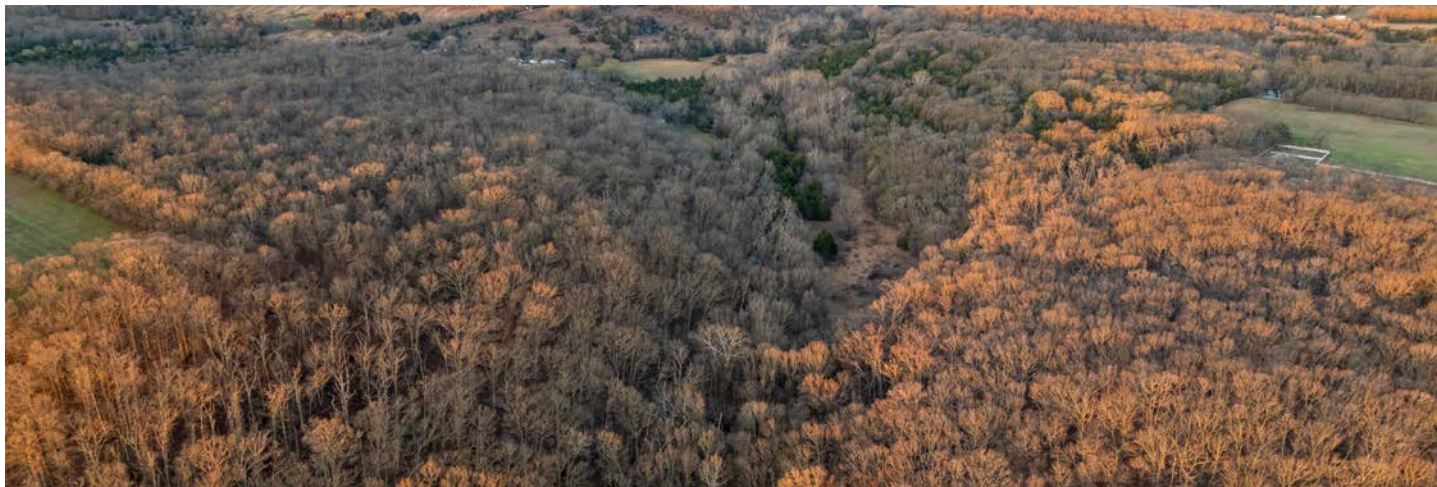


PROPERTY FEATURES

PRICE: **\$175,000** | COUNTY: **CEDAR** | STATE: **MISSOURI** | ACRES: **30**

- Drilled well
- Electric
- Turkey Creek
- Trails
- Abundant deer and turkey
- Mature timber
- Close to Stockton Lake
- On dead-end road

26 +/- ACRES OF MATURE TIMBER



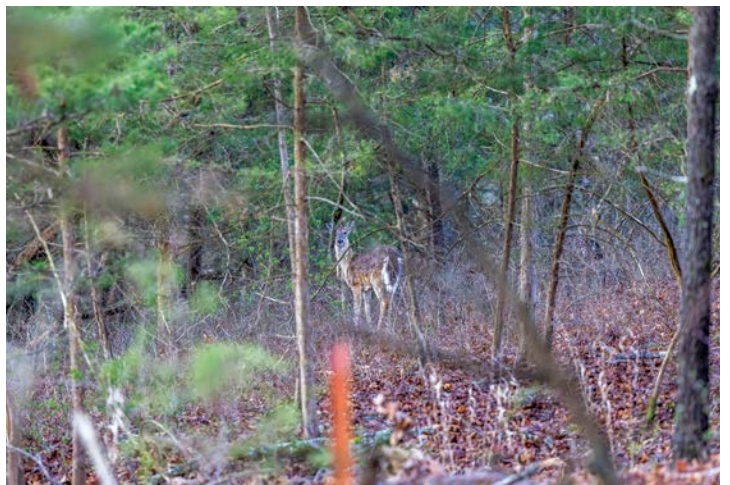
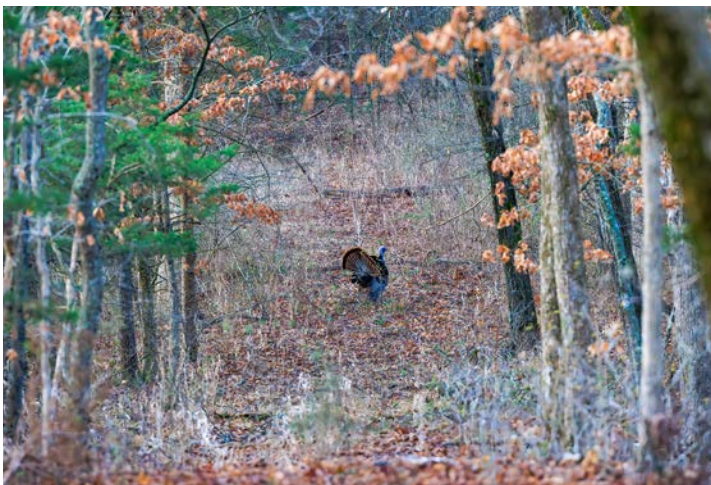
4 +/- ACRES OF GRASSY OPENINGS



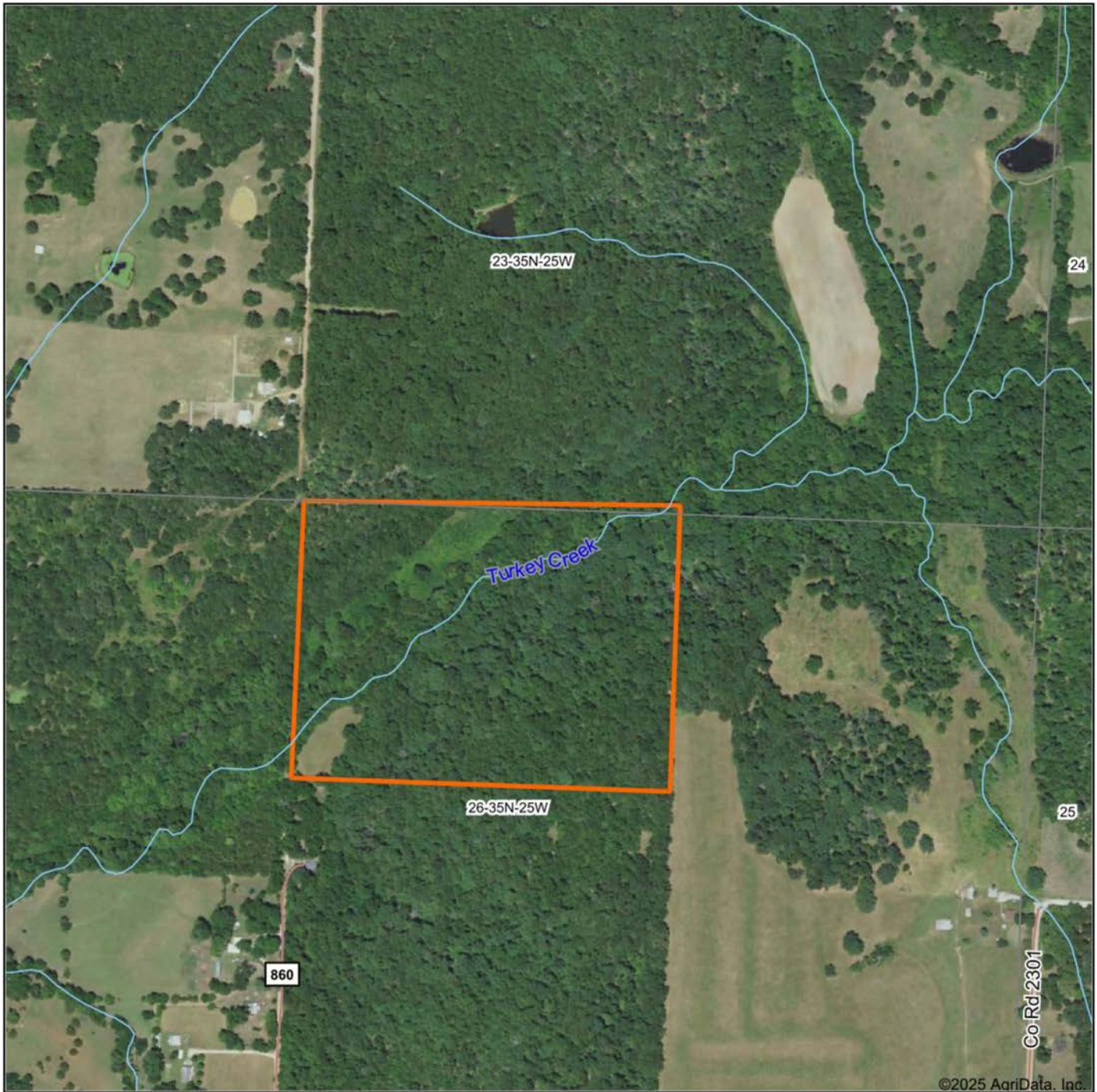
TURKEY CREEK



ABUNDANT WILDLIFE



AERIAL MAP



Maps Provided By:



© AgriData, Inc. 2023 www.AgriDataInc.com

Boundary Center: 37° 46' 13.91, -93° 39' 22.99

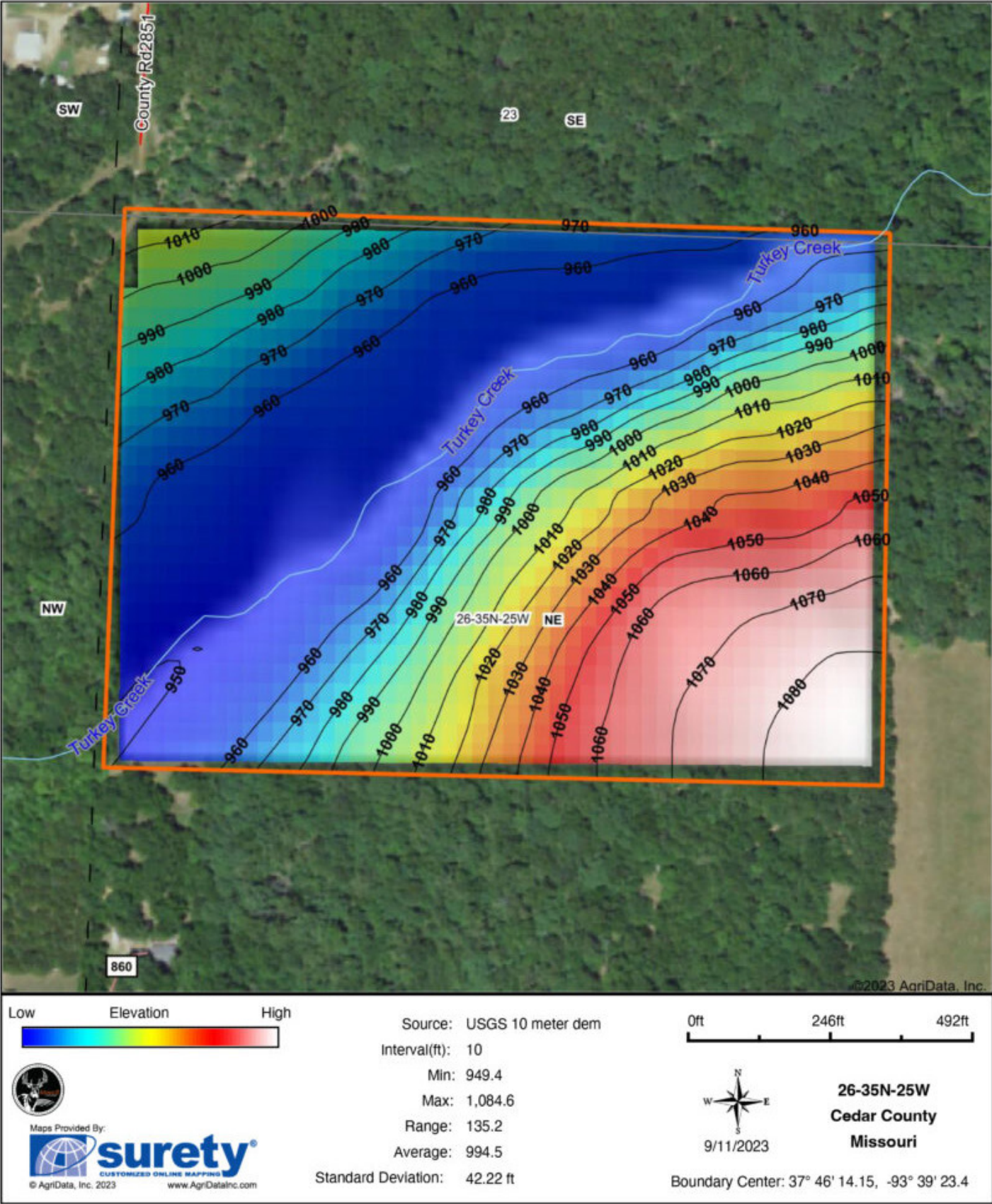
26-35N-25W
Cedar County
Missouri

0ft 546ft 1093ft

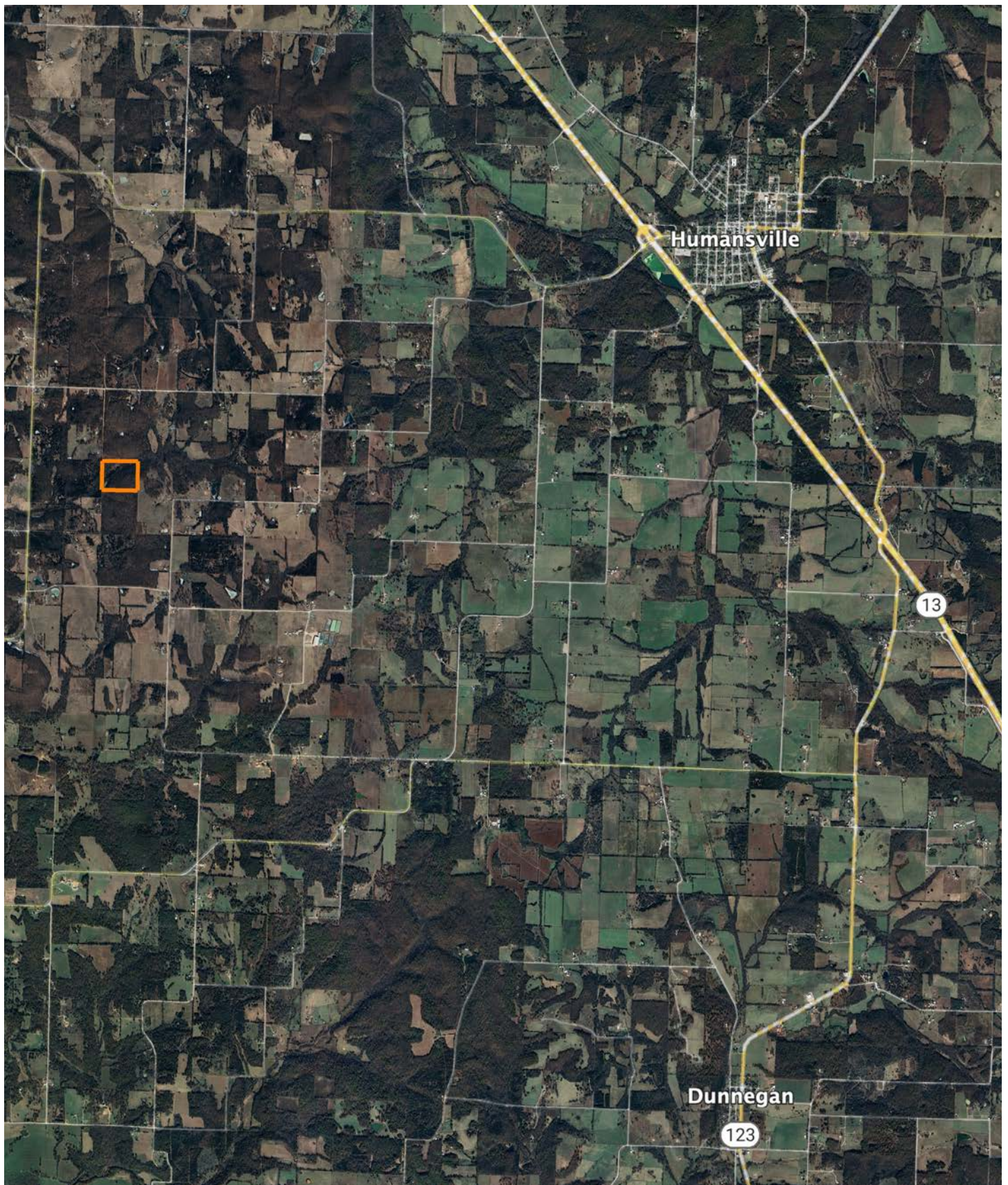


3/23/2025

HILLSHADE MAP



OVERVIEW MAP



AGENT CONTACT

Looking for land or selling a piece of property can be stressful or overbearing, but not if you're working with the right agent. Bjorn Wilkerson is all about making sure each client has an enjoyable experience from start to finish. A lifelong lover of the outdoors, Bjorn has a background in agriculture and a passion for all things outdoors. This includes hunting, fishing, camping, traveling, hiking, and land management, not to mention his personal favorites: spring turkey hunting, whitetail hunting, and bowfishing. Born in West Plains, Missouri, Bjorn attended Couch High School and graduated from Missouri State University—Springfield with a degree in Wildlife Management. Before coming to Midwest Land Group, he worked in agriculture and operations with Archer Daniels Midland (ADM), a human and animal nutrition company specializing in agricultural origination and processing, where he worked his way around the company, serving in a variety of positions, everything from trainee, plant manager, and recruiter to new manager development specialist and continuous improvement practitioner. Being a service to someone looking for hunting or farming property is what drives Bjorn. He wants each experience to not only be enjoyable, but seamless as well. If you're in the market to sell or buy land, give Bjorn a call.



BJORN WILKERSON,
LAND AGENT

417.233.1243

BWilkerson@MidwestLandGroup.com



MidwestLandGroup.com

This property is being offered by Midwest Land Group, LLC. 913.674.8010. All information provided by Midwest Land Group, LLC or their agents was acquired from sources deemed accurate and reliable, however we do not warrant its accuracy or completeness. Midwest Land Group, LLC assumes no liability for error, omission or investment results. Midwest Land Group, LLC. Licensed in Arkansas, Illinois, Iowa, Kansas, Minnesota, Missouri, Nebraska, Oklahoma, South Dakota, Tennessee, Texas, Wisconsin, and Wyoming.