

LAND FOR SALE

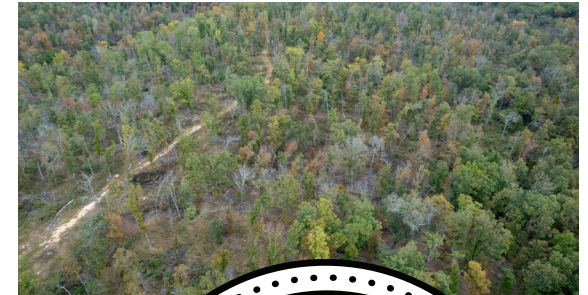
TRACT 3 - PRIME 15 ACRE RECREATION OR BUILD LOCATION

PRICE: **\$61,000**
COUNTY: **BOLLINGER**
STATE: **MISSOURI**
ACRES: **15**



PROPERTY FEATURES

- Good access
- Wooded tract
- Great unrestricted build location
- Investment property
- Electric close by
- Abundant wildlife
- Cleared area
- Secluded
- 5 minutes to Marble Hill, MO
- 2 hours from St. Louis, MO



For more information, contact:

JASON STOKES, Land Agent

636.465.9445 | JStokes@MidwestLandGroup.com

MidwestLandGroup.com

