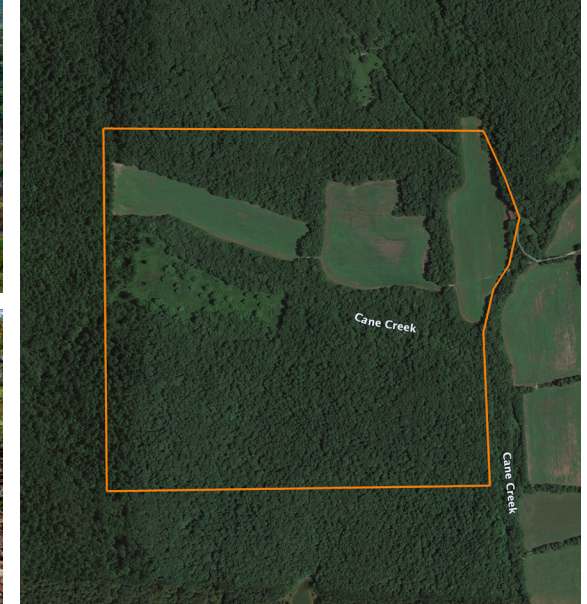


LAND FOR SALE

# TRACT 5 - 172 +/- ACRES WITH BEAUTIFUL BOTTOM GROUND FIELDS BORDERING CANE CREEK

PRICE: **\$518,500**  
COUNTY: **BOLLINGER**  
STATE: **MISSOURI**  
ACRES: **172**



## PROPERTY FEATURES

- Year-round Cane Creek on property
- Build locations
- Productive hay fields
- Great hunting
- Electricity available onsite
- Bottomland fields
- Good access
- 5 miles to Marble Hill
- 25 miles to Jackson
- 30 miles to Cape Girardeau



For more information, contact:

**JASON STOKES**, Land Agent

**636.465.9445** | [JStokes@MidwestLandGroup.com](mailto:JStokes@MidwestLandGroup.com)

**MidwestLandGroup.com**

