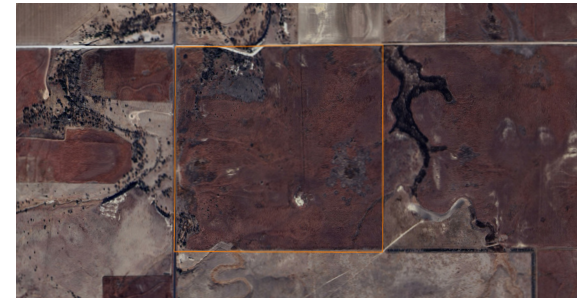


LAND FOR SALE

PREMIUM NATIVE GRASSLAND SOUTH OF WEBSTER RESERVOIR

PRICE: **\$260,000**
COUNTY: **ROOKS**
STATE: **KANSAS**
ACRES: **160**



PROPERTY FEATURES

- 160 +/- acres in Rooks County, Kansas
- 140 +/- acres expired CRP
- Just south of Webster and north of Zurich, Kansas
- Thick native habitat
- Excellent upland bird and deer hunting
- Blacktop frontage
- Mineral rights believed to be intact and pass



For more information, contact:

COLE SCHUMACHER, Land Agent

785.624.2191 | CSchumacher@MidwestLandGroup.com

MidwestLandGroup.com

