

LAND FOR SALE

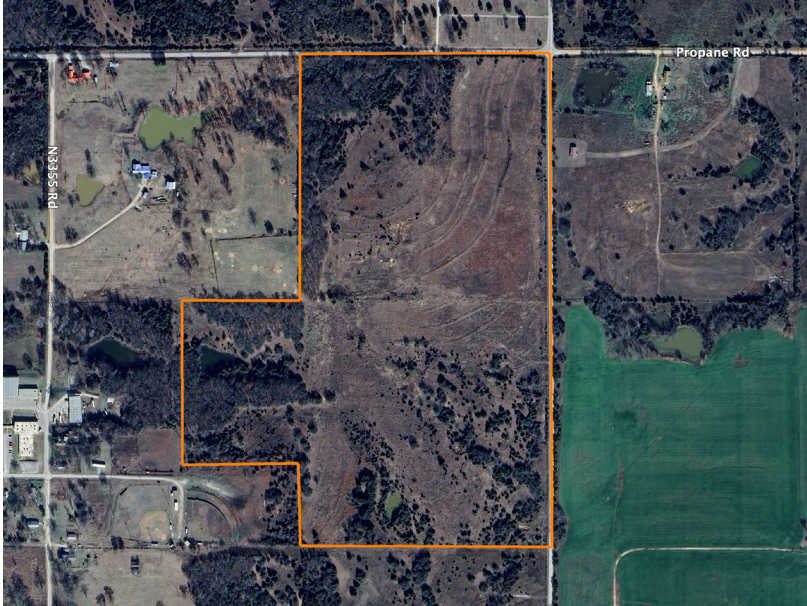
92.5 +/- ACRES OF ROLLING PASTURES & ENDLESS POSSIBILITIES IN WANETTE

PRICE: **\$410,000**

COUNTY: **POTTAWATOMIE**

STATE: **OKLAHOMA**

ACRES: **92.5**



PROPERTY FEATURES

- Two small ponds
- Over 64' of elevation change (1,025' to 1,089')
- 1/4 mile of blacktop county road frontage
- 1/2 mile of gravel county road frontage
- Electric available along entire eastern and northern boundary
- Strong water well production in immediate area
- Primarily native grass pasture
- Approximately 41" of annual precipitation
- Multiple build sites
- Excellent wildlife habitat

For more information, contact:

BRADEN POLLARD, Land Agent

580.222.5265 | BPollard@MidwestLandGroup.com

MidwestLandGroup.com

