

LAND FOR SALE

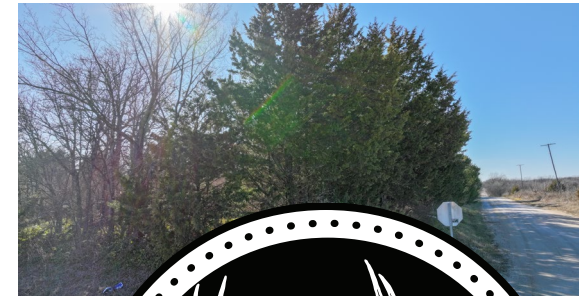
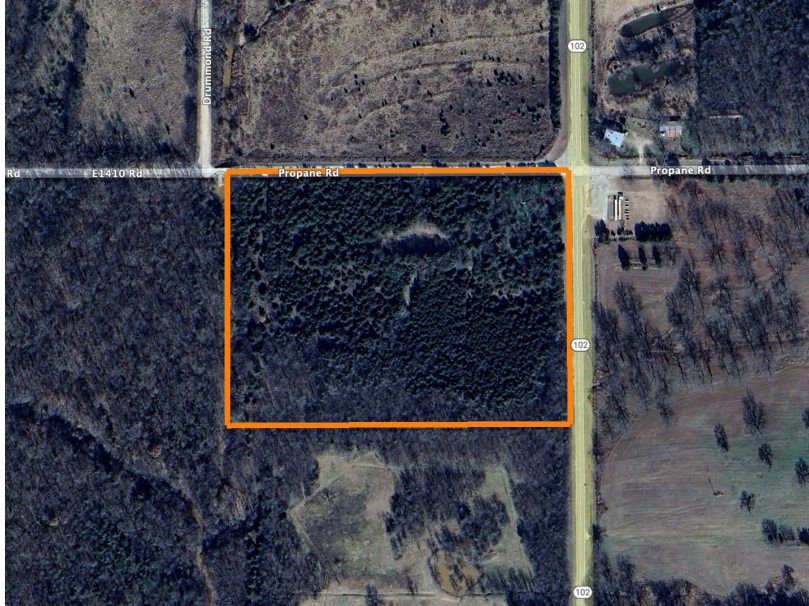
15 +/- ACRES ON HIGHWAY 102 - WOODED, WILDLIFE & BUILD POTENTIAL

PRICE: **\$82,500**

COUNTY: **POTTAWATOMIE**

STATE: **OKLAHOMA**

ACRES: **15**



PROPERTY FEATURES

- 15 +/- acres
- Small 1/4-acre pond
- Over 36' of elevation change (970' to 1,007')
- 700 feet of OK-Highway 102 frontage
- 935 feet of gravel county road frontage
- Electric available along entire eastern and northern boundary
- Strong water well production in immediate area
- 99% thick timber coverage
- Approximately 41" of annual precipitation
- Excellent build site
- Excellent wildlife habitat
- Wanette Public Schools
- 50 miles to OKC
- 160 miles to DFW

For more information, contact:

BRADEN POLLARD, Land Agent

580.222.5265 | BPollard@MidwestLandGroup.com

MidwestLandGroup.com

