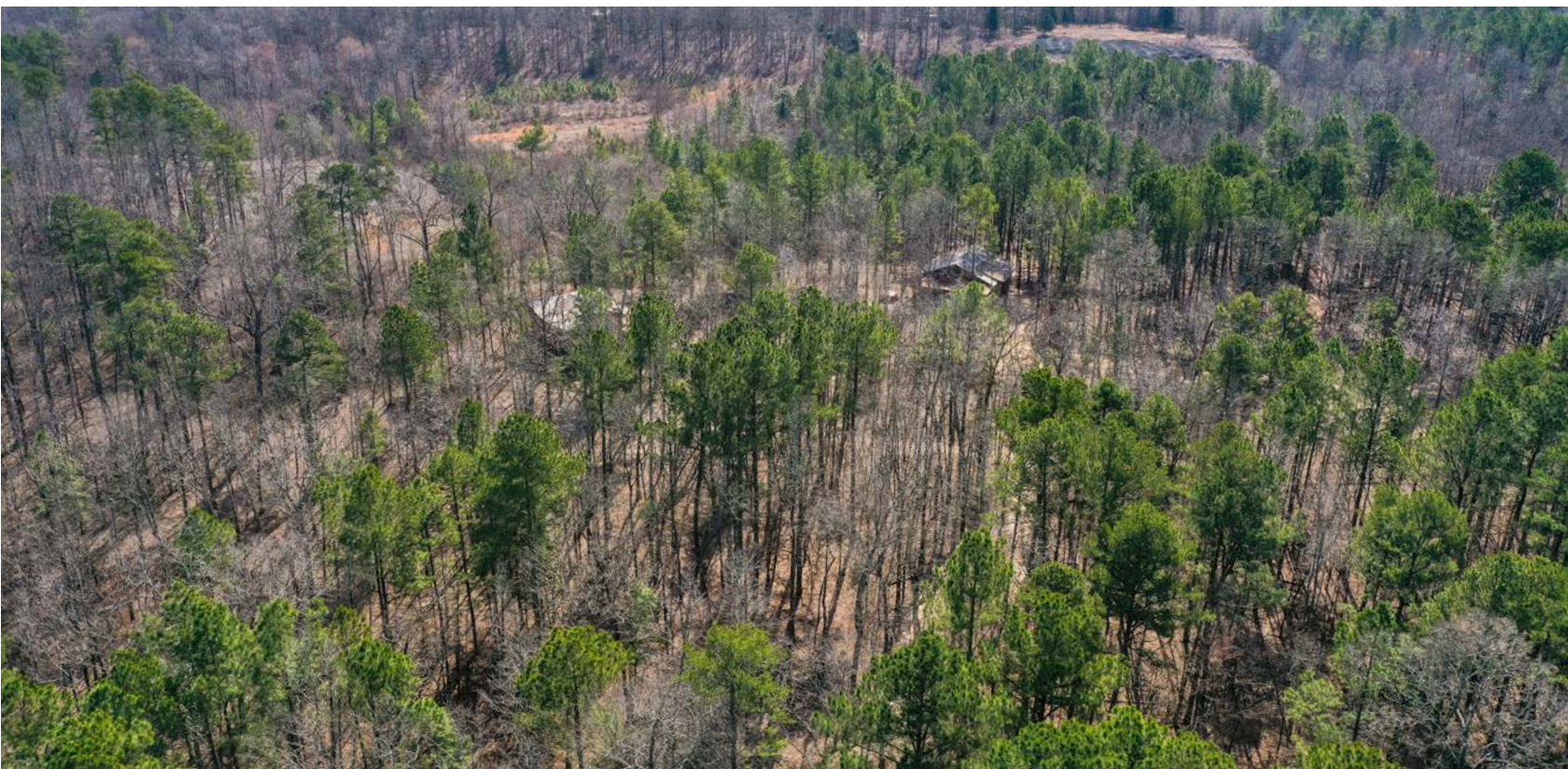


MIDWEST LAND GROUP PRESENTS

15 ACRES

# PIKE COUNTY, AR

45 RUSTIC WAY, AMITY, ARKANSAS, 71921



[MidwestLandGroup.com](http://MidwestLandGroup.com)



MIDWEST LAND GROUP IS HONORED TO PRESENT

# CHARMING NEW CABINS IN CADDO RIVER COUNTRY

---

The Caddo River Valley and the mountains that surround them are one of the most sought-after areas in the Natural State. The beautiful mountains and ridges rich in quartz crystals catch the water that feeds the primary attraction for the area, The Caddo River. The natural beauties and wonders of the area make this the perfect place to escape to. If you have been looking for your own property to have that place to escape, these charming new cabins are the perfect fit. Located just 15 minutes south of Glenwood on 15 +/- acres, these two cabins have been constructed in the last year, are completely finished, and are ready for their new owner.

The acreage is covered in mature pine and hardwood timber, providing a secluded and private setting. Both cabins are 1,200 +/- square feet and have two beds and two baths. Although they are finished differently from one another, one thing is true of both, they blend

rustic finishes with modern comforts and conveniences that make them the perfect place to enjoy time with friends and family. Cozy living areas are uniquely paired with nicely finished bedrooms and bathrooms with an abundance of great stone masonry. Front and back porches on both cabins have plenty of space for gatherings and cooking with a crowd.

These cabins currently have a high occupancy rate as an Airbnb rental, which is no surprise with the amenities and location that they have to offer. All of this is just 15 minutes from Glenwood and the Caddo River, 25 minutes from Murfreesboro and the crater of Diamonds State Park, and only one hour from Hot Springs. If you have been looking for a recreational property to call your own, or an investment in one of the most unique areas in the state, this one will be hard to beat. Call today for your own private tour.





# PROPERTY FEATURES

PRICE: **\$625,000** | COUNTY: **PIKE** | STATE: **ARKANSAS** | ACRES: **15**

---

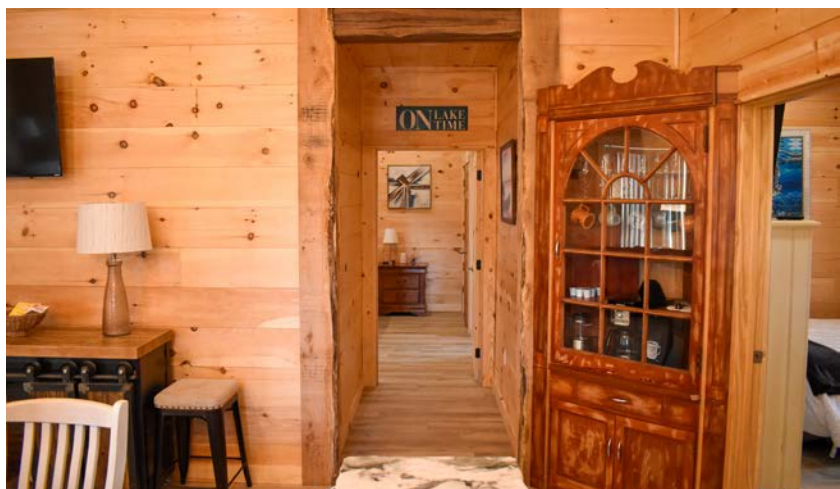
- 15 +/- acres
- Secluded and wooded setting
- Two newly constructed cabins
- Both 1,200 +/- sq. ft.
- Both two bed two baths
- Rustic finishes with modern comforts and amenities
- Stone masonry
- Cozy living areas
- Neatly finished
- Front and back porches
- Hot tub
- Current Airbnb rentals at high occupancy rate
- Timbered acreage with no visible neighbors from cabins
- 15 minutes from Glenwood
- 15 minutes from the Caddo River
- 25 minutes from Murfreesboro
- 1 hour from Hot Springs





# CABIN #1

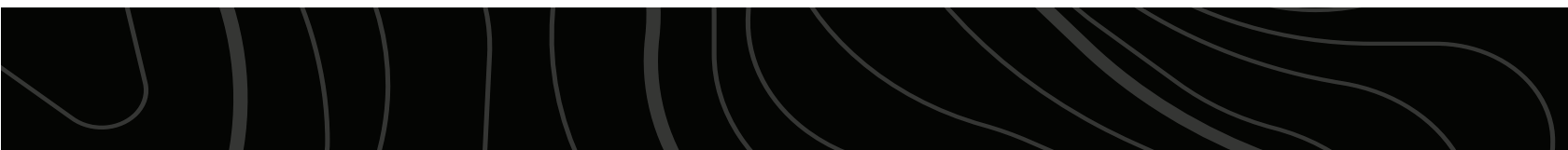
---





## CABIN #2

---





# HOT TUB

---



# FRONT & BACK PORCHES

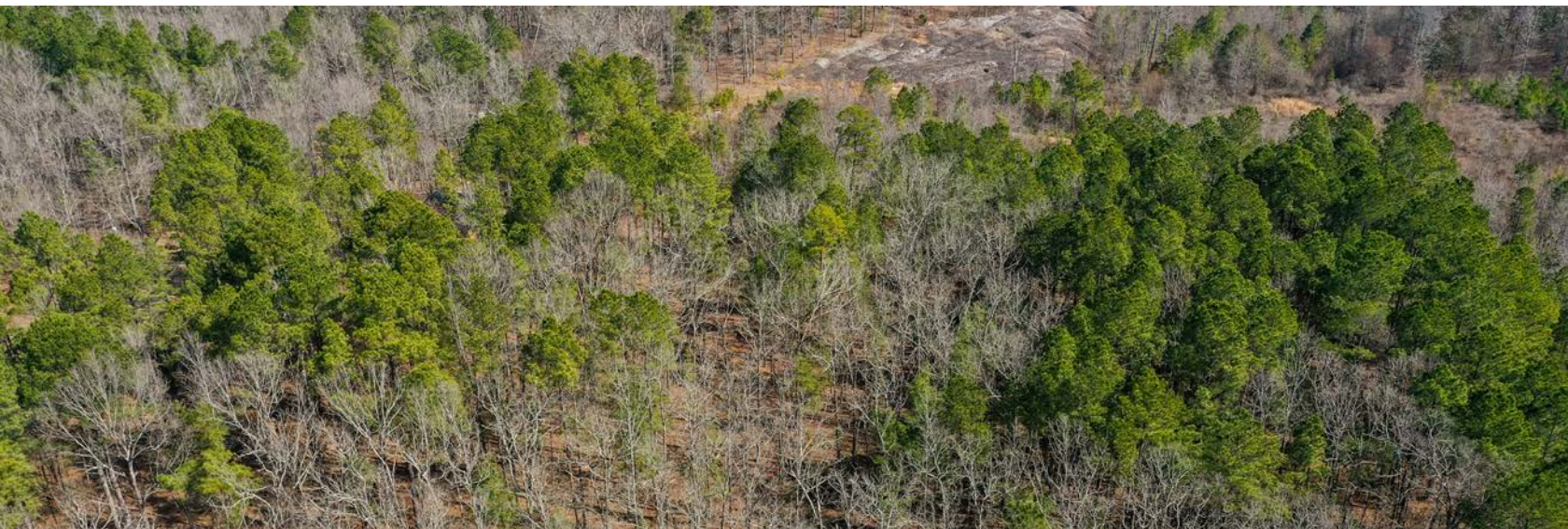
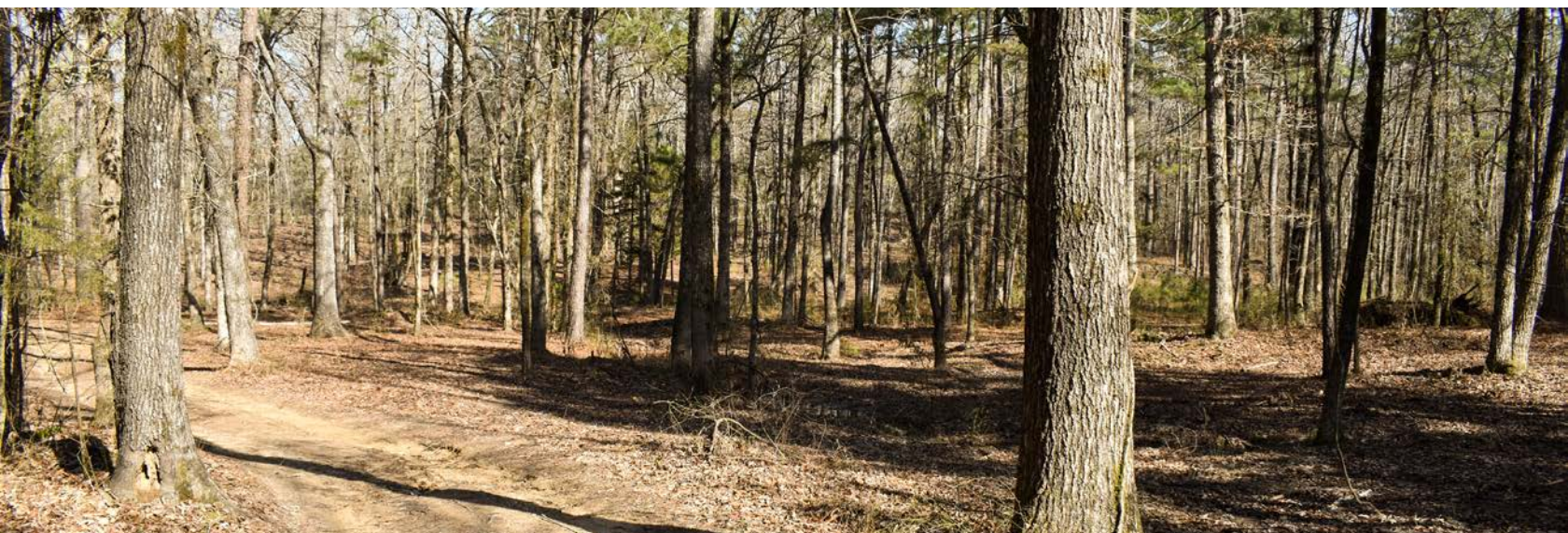
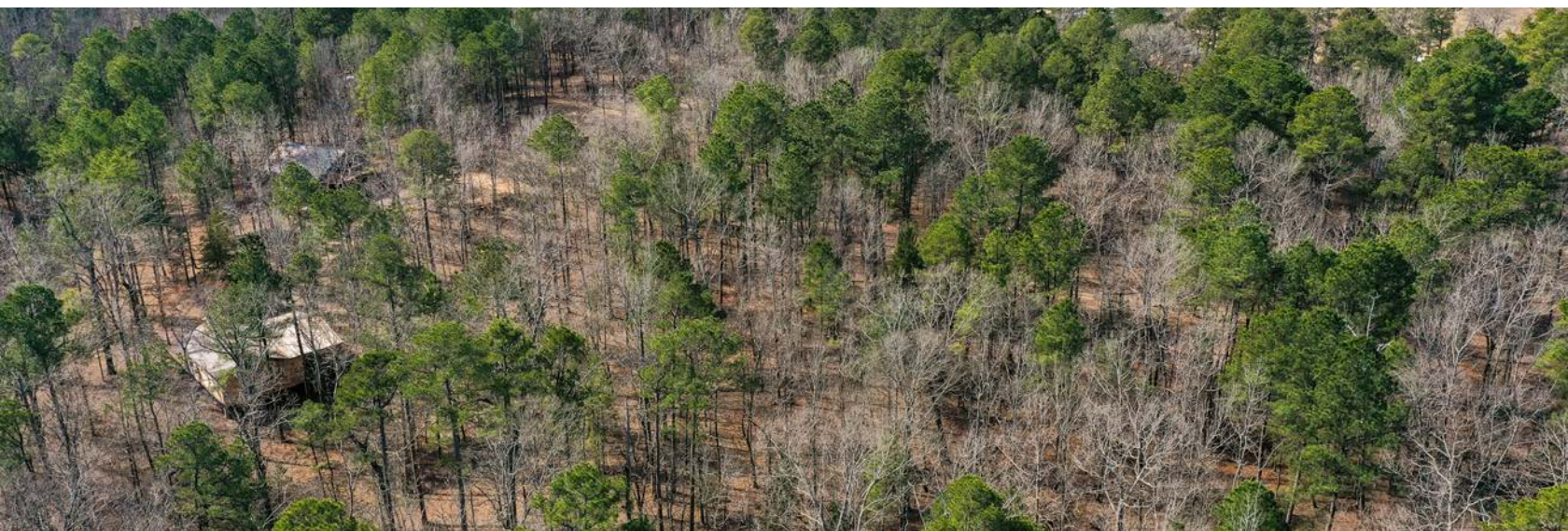
---





# 15 +/- WOODED ACRES

---





# ADDITIONAL PHOTOS

---





# AERIAL MAP



©2025 AgriData, Inc.



Maps Provided By:



© AgriData, Inc. 2023

www.AgriDataInc.com

Boundary Center: 34° 15' 49.99, -93° 34' 10.31

**33-5S-24W**  
**Pike County**  
**Arkansas**

0ft 281ft 562ft



2/20/2025



# TOPOGRAPHY MAP



Maps Provided By:



© AgriData, Inc. 2023

www.AgriDataInc.com

Source: USGS 1 meter dem

Interval(ft): 2.0

Min: 571.8

Max: 604.3

Range: 32.5

Average: 587.8

Standard Deviation: 6.79 ft

0ft 304ft 609ft



2/20/2025

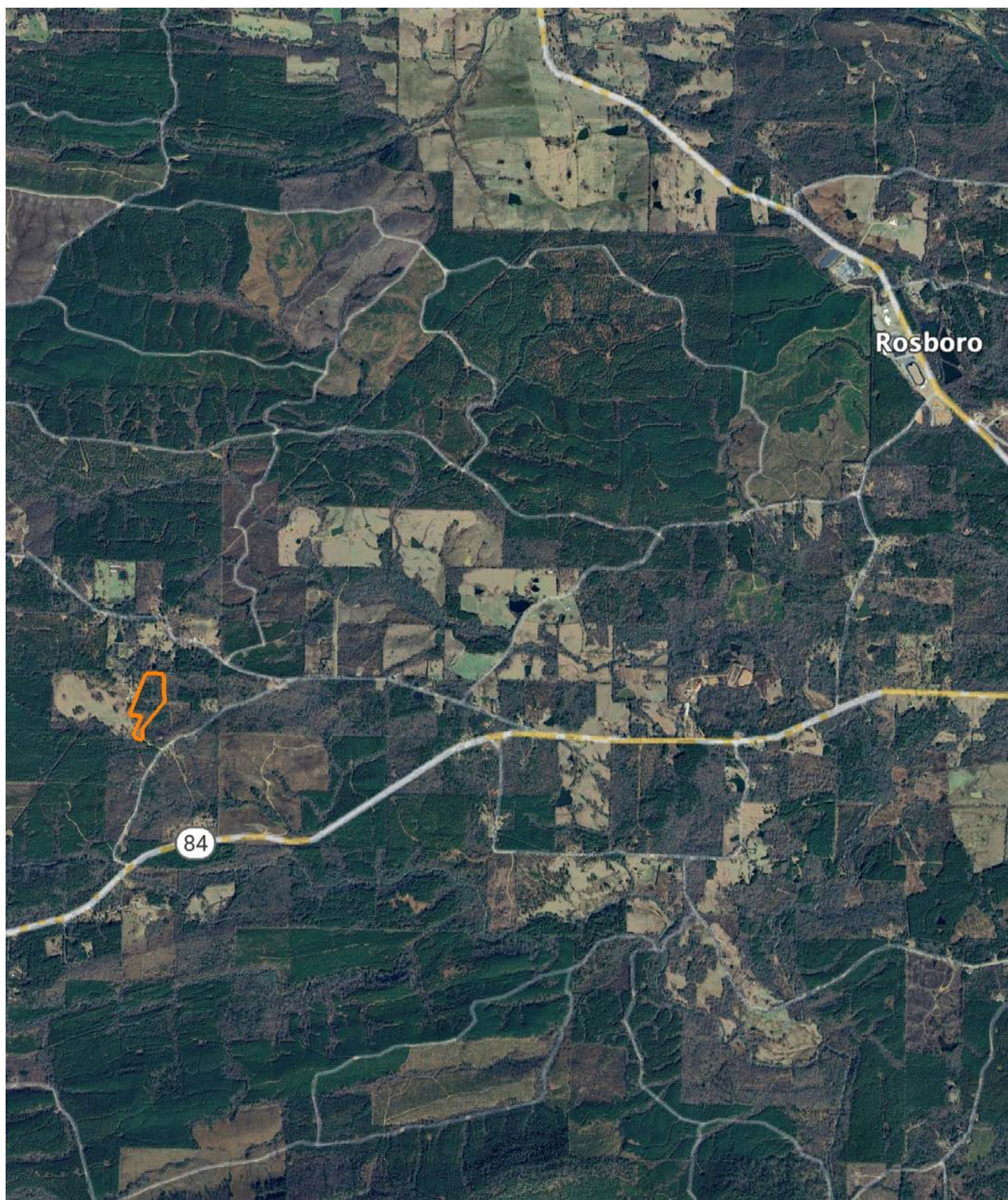
**33-5S-24W**  
**Pike County**  
**Arkansas**

Boundary Center: 34° 15' 49.99, -93° 34' 10.31



# OVERVIEW MAP

---





## AGENT CONTACT

Jake Fowler has a love for agriculture. Between his formal education and lifetime of experience with cattle, horses, and poultry, he has a deep understanding of farming operations and how to maximize the efficiency of land. He knows the animals that can be raised in different areas, that soil and grass quality can make all the difference, and that location is integral to a farm's success. Jake has traveled all over western Arkansas and the River Valley area, gaining knowledge and contacts in the cattle, hay, horse, poultry, and timber industries. Born in Russellville, Arkansas, Jake went to Western Yell County High School in Havana, Arkansas, and Connors State College in Warner, Oklahoma, where he graduated cum laude. Before coming to Midwest Land Group, Jake pursued a career in logistics and land management.

Since joining Midwest Land Group, Jake has worked across western Arkansas and the Arkansas River Valley assisting clients with buying and selling cattle farms, estates, homes on acreage, hunting properties, timberland, and more. When he isn't busy helping clients, you can find Jake busy on the farm taking care of his land and cattle, deer hunting, turkey hunting, fishing, or team roping. Jake, his wife Lexie, and their son Wylie reside on their farm in Danville, Arkansas. Give Jake a call today to put his experience to work for you.



**JAKE FOWLER,** LAND AGENT  
**479.393.1997**

[JFowler@MidwestLandGroup.com](mailto:JFowler@MidwestLandGroup.com)



## MidwestLandGroup.com

This property is being offered by Midwest Land Group, LLC. 913.674.8010. All information provided by Midwest Land Group, LLC or their agents was acquired from sources deemed accurate and reliable, however we do not warrant its accuracy or completeness. Midwest Land Group, LLC assumes no liability for error, omission or investment results. Midwest Land Group, LLC. Licensed in Arkansas, Illinois, Iowa, Kansas, Minnesota, Missouri, Nebraska, Oklahoma, South Dakota, Tennessee, Texas, Wisconsin, and Wyoming.