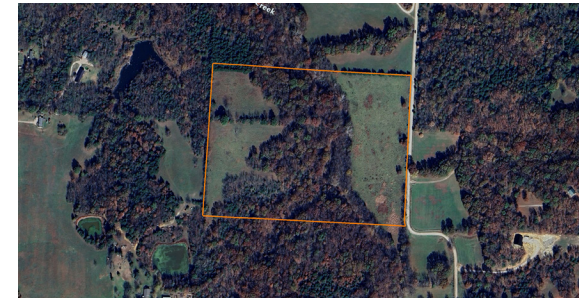


LAND FOR SALE

# INCREDIBLE RECREATION AND HOMESITE COMBINATION

PRICE: **\$217,500**  
COUNTY: **JOHNSON**  
STATE: **MISSOURI**  
ACRES: **30**



## PROPERTY FEATURES

- 16 +/- open acres
- 14 +/- wooded acres
- Homesite(s)
- Power at the road
- Water at the road
- Coperas Creek frontage
- Deer and turkey hunting
- Diverse topography
- Open to dividing
- Under an hour from Lee's Summit
- 15 minutes from Warrensburg
- Leeton Schools



For more information, contact:

**BEN EWBANK**, Land Agent

**816.820.2345** | [BEwbank@MidwestLandGroup.com](mailto:BEwbank@MidwestLandGroup.com)

**MidwestLandGroup.com**

