

MIDWEST LAND GROUP PRESENTS

2 ACRES IN

JACKSON COUNTY MISSOURI



MidwestLandGroup.com

MIDWEST LAND GROUP IS HONORED TO PRESENT

LUXURY ESTATE ON 2 ACRES – BLUE SPRINGS SOUTH SCHOOL DISTRICT

Welcome to a rare gem in the heart of Blue Springs South, where luxury meets nature. This 5-bedroom, 4.5-bath estate home sits on a dead-end road at the back of a cul-de-sac, on the best lot in the best neighborhood, offering unmatched privacy, stunning upgrades, and resort-style outdoor living. This house has been very well cared for, with elegant, and thoughtfully remodeled interiors. When you enter the home you notice the perfect layout for both functionality and beauty. With a grand, floor-to-ceiling lodge-style wood-burning fireplace with a 200-year-old barn beam mantle being the breathtaking focal point. Two additional gas fireplaces, add warmth and character to multiple living spaces. The huge main-level master bedroom sits just off the living room, complete with an amazing bathroom, large walk-in closets, and a walk-out to a private deck. Dual staircases lead to a striking catwalk overlooking the great room and up to 3 large bedrooms and 2 bathrooms. Two of the bedrooms have attached reading or homework nooks, perfect for the kids to have their own personal space in their rooms. The newly remodeled kitchen features an oversized island, granite countertops, and KitchenAid

stainless steel appliances. New hardwood flooring, fresh interior paint, and light fixtures throughout the home. A fully finished lower level complete with an additional bedroom, family room, large bar, and pool table. This home caters to outdoor living and the walkout leads you to the resort-style freeform pool with all brand-new mechanics in 2024. This one-of-a-kind home sits on a 2-acre private retreat with a sprawling yard, wooded surroundings, and abundant wildlife. Newly created walking trails, a wooden bridge, and a rock fire pit create a peaceful country feel just off the backyard. Just off of the family room leads you out to an incredible enclosed 3-season deck with stunning views and a perfect spot for outdoor dining and lounging. An expansive 3-car suspended garage creates an awesome lower-level workshop space and storage area. There have been many extensive upgrades for peace of mind, including two brand-new HVAC units, a new instant hot water system, a new 40-year architectural roof, exterior paint, lighting, and professional landscaping. This estate is a dream home for those seeking privacy, luxury, and outdoor adventure—all in an unbeatable location.



PROPERTY FEATURES

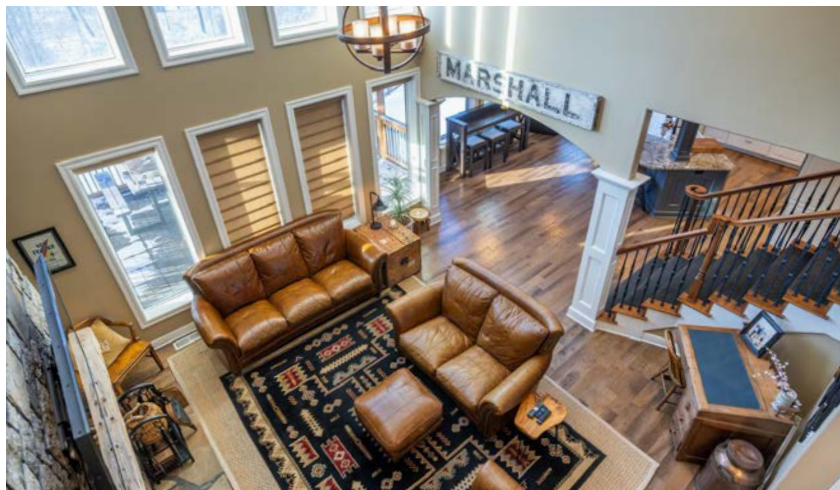
PRICE: **\$989,000** | COUNTY: **JACKSON** | STATE: **MISSOURI** | ACRES: **2**

- 2-acre private retreat
- Resort-style freeform pool with brand-new mechanics
- Enclosed 3-season deck with stunning views
- Fully remodeled kitchen
- KitchenAid stainless steel appliances
- New flooring
- Two brand-new HVAC units
- New instant hot water system
- New 40-year architectural roof
- Newly created walking trails, wooden bridge, and a rock fire pit
- Grand, floor-to-ceiling lodge-style wood-burning fireplace



2-ACRE PRIVATE RETREAT

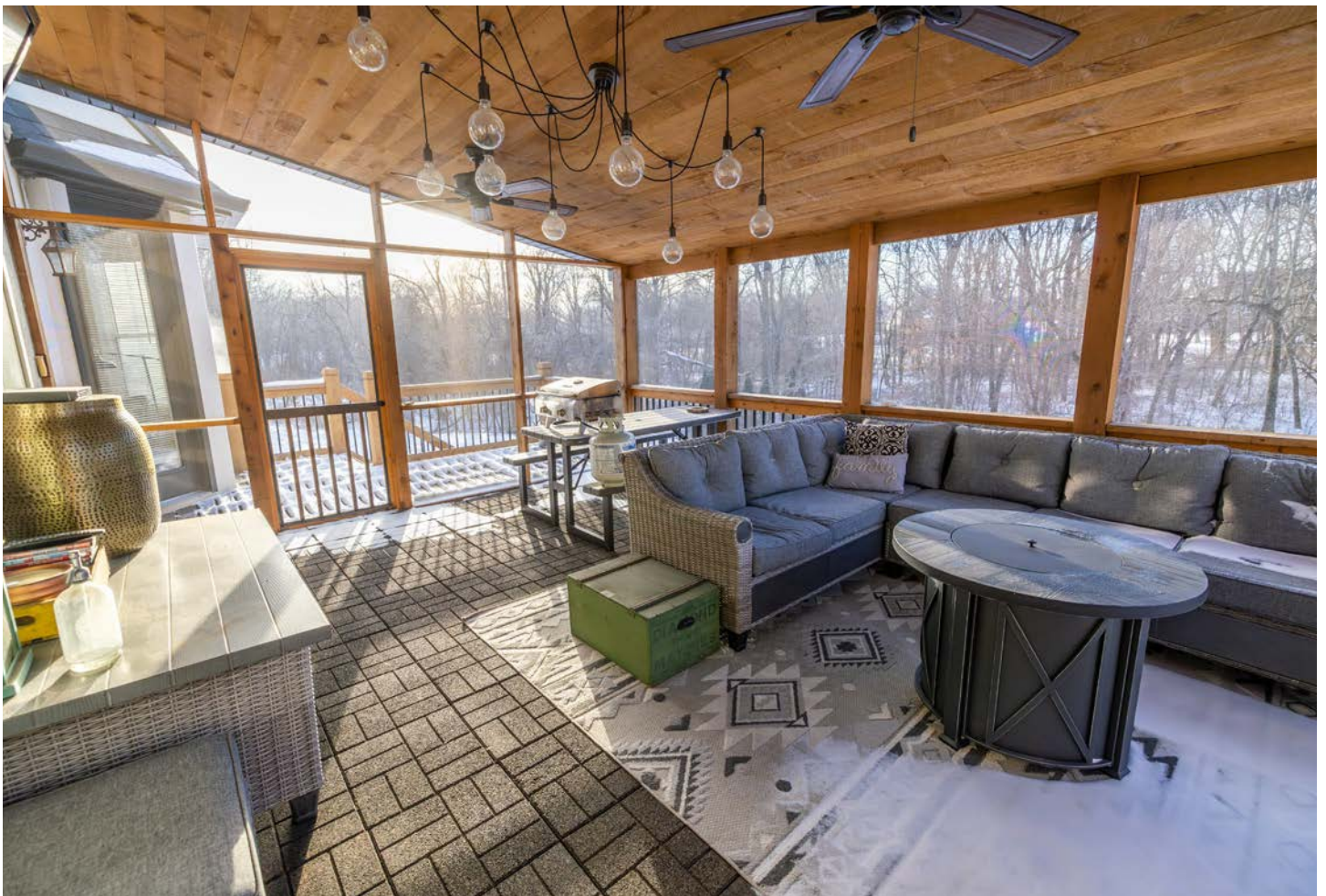
This 5-bedroom, 4.5-bath estate home sits on a dead-end road at the back of a cul-de-sac, on the best lot in the best neighborhood, offering unmatched privacy, stunning upgrades, and resort-style outdoor living.



RESORT-STYLE FREEFORM POOL



ENCLOSED 3-SEASON DECK



FULLY REMODELED KITCHEN

The newly remodeled kitchen features an oversized island, granite countertops, and KitchenAid stainless steel appliances.



LODGE-STYLE WOOD-BURNING FIREPLACE

With a grand, floor-to-ceiling lodge-style wood-burning fireplace with a 200-year-old barn beam mantle being the breathtaking focal point. Two additional gas fireplaces, add warmth and character to multiple living spaces.



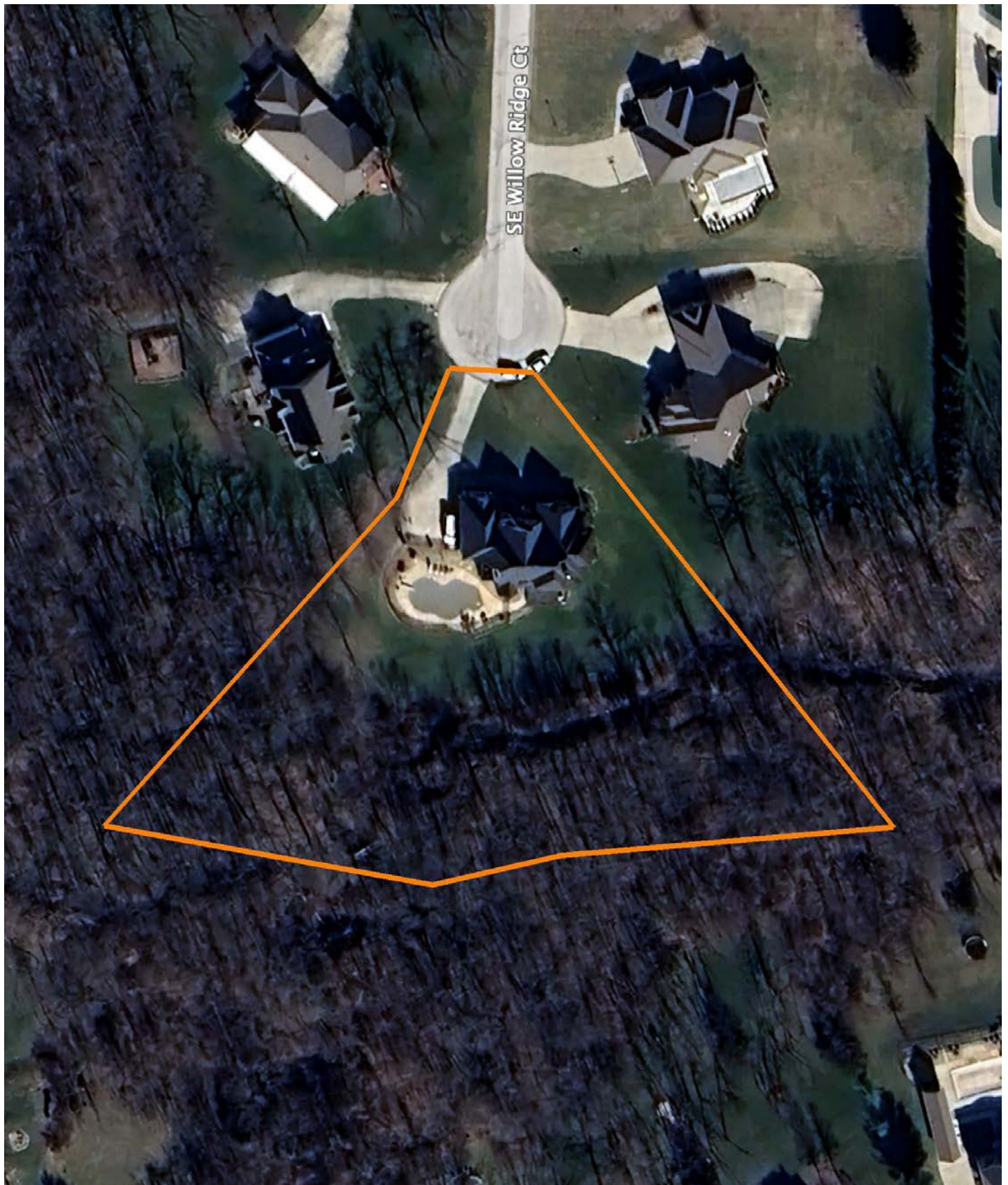
NEW 40-YEAR ARCHITECTURAL ROOF



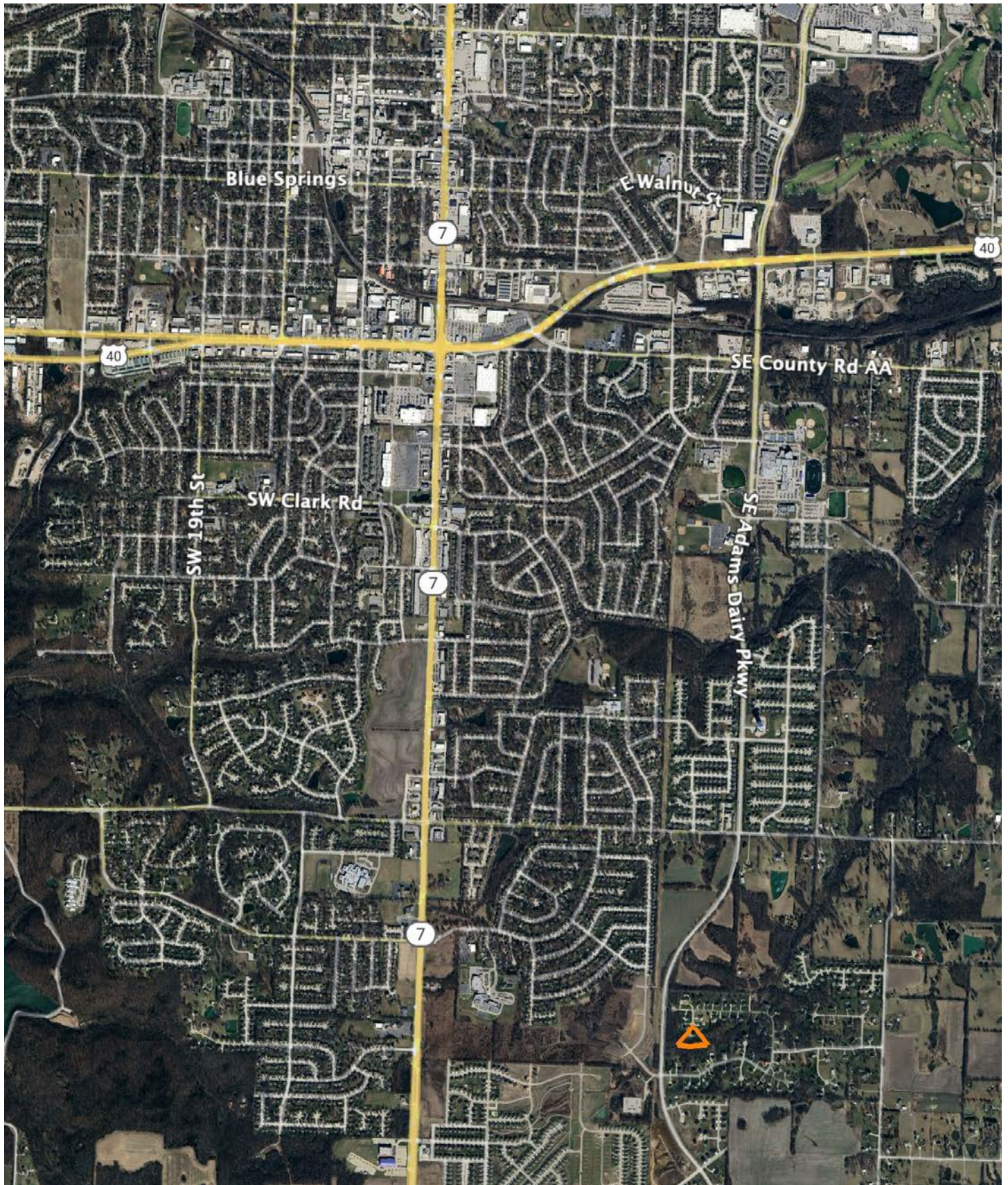
ADDITIONAL PHOTOS



AERIAL MAP



OVERVIEW MAP



AGENT CONTACT

Born in Missouri, Nate Flynn always had great outdoor experiences at his fingertips. Some of his earliest memories involve hunting or fishing with his Dad, Grandpa and Uncle. He picked up a bow at age 12 – taking his first Whitetail that same year – and has gone on to become an accomplished hunter with a number of quality animals harvested so far. Having bought and flipped homes for several years, it was natural for Nate to earn his real estate license and bring his knowledge, experience and respect for land to Midwest Land Group. As a professional hunting guide since the age of 19, he's worked with hunters of all expertise levels and understands what type of experience each is looking for so he can find properties that cater to those needs.

When he's not connecting buyers and sellers with land, Nate and his father run a successful 300-acre row crop farming operation in northwestern MO. If his face looks familiar, perhaps you've booked a hunt with him at Central Dakota Lodge, a hunting lodge in North Dakota, that he started with his family. Or maybe you've seen him starring on the Outdoor Channel's award-winning "Heartland Bowhunter," where he is also part of their pro staff. Even though he's traveled and hunted all across the country, Nate lives in Missouri with his wife, Lauren, and knows Missouri and Kansas land like the back of his hand. This along with a lifetime of hunting, fishing, guiding, farming and filming gives Nate a good eye for matching the right land with the right buyer. When working with Nate, you'll appreciate his knowledge and approach to helping his clients make the best decisions possible related to land ownership.



NATE FLYNN, LAND AGENT
913.223.0002

NateFlynn@MidwestLandGroup.com



MidwestLandGroup.com

This property is being offered by Midwest Land Group, LLC. 913.674.8010. All information provided by Midwest Land Group, LLC or their agents was acquired from sources deemed accurate and reliable, however we do not warrant its accuracy or completeness. Midwest Land Group, LLC assumes no liability for error, omission or investment results. Midwest Land Group, LLC. Licensed in Arkansas, Illinois, Iowa, Kansas, Minnesota, Missouri, Nebraska, Oklahoma, South Dakota, Tennessee, Texas, Wisconsin, and Wyoming.