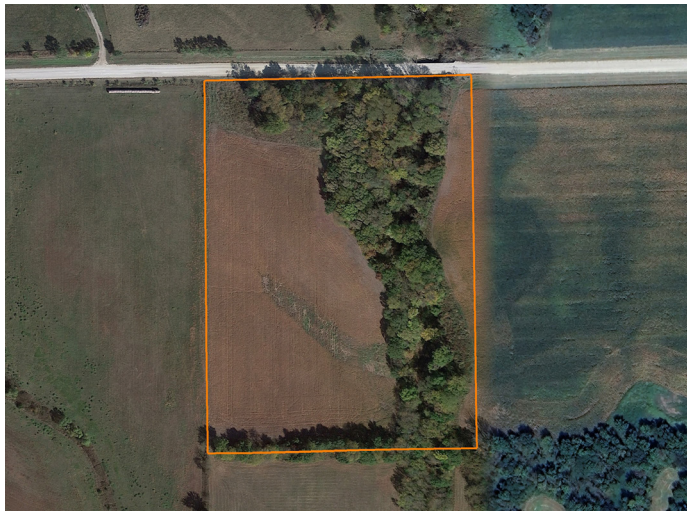


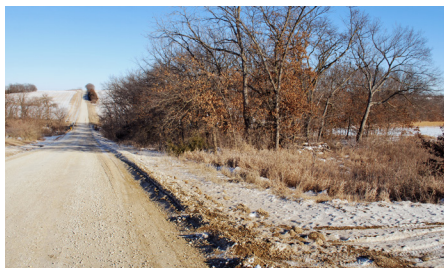
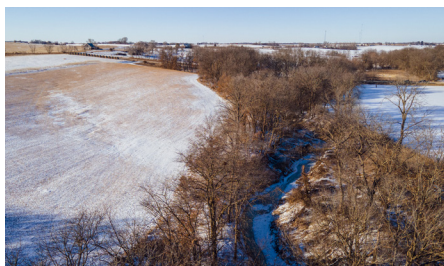
# LAND FOR SALE

## COMPACT STATE LINE RECREATIONAL TRACT



### PROPERTY FEATURES

- 5 +/- tillable acres
- Great mix of hardwood timber
- Various options for food plot locations
- East Big Fork Creek
- No rural water and electricity
- Mostly Class III soils
- Well-maintained year-round gravel road
- Mineral rights intact and transfer
- 0.6 miles to Interstate 35
- 4.8 miles to Lamoni, IA
- 22 miles to Bethany, MO



PRICE: **\$72,500**

COUNTY: **HARRISON**

STATE: **MISSOURI**

ACRES: **10**

For more information, contact:

**DREW YARKOSKY**, Land Agent

**816.599.3647** | [DYarkosky@MidwestLandGroup.com](mailto:DYarkosky@MidwestLandGroup.com)

**MidwestLandGroup.com** BUYERS, SELLERS, AND LAND – CONNECTED

Midwest Land Group, LLC, 913.674.8010, Licensed in Arkansas, Illinois, Iowa, Kansas, Minnesota, Missouri, Nebraska, Oklahoma, South Dakota, Tennessee, Texas, Wisconsin, and Wyoming.

