

MIDWEST LAND GROUP PRESENTS

4.5 ACRES IN

FAULKNER COUNTY ARKANSAS

23 RAINEY ROAD, GREENBRIER, AR 72058



MidwestLandGroup.com

MIDWEST LAND GROUP IS HONORED TO PRESENT

STUNNING LUXURY HOME IN A PRIME LOCATION

Welcome to this stunning 4-bedroom, 4-bathroom home, perfectly nestled on 4.5 acres of lush, private land in one of the most desirable areas. Just 5 minutes off of Highway 65 in Greenbrier, Arkansas, this exquisite property blends luxury, functionality, and comfort, making it an ideal choice for those seeking a peaceful retreat with all the modern conveniences.

As you step inside, you'll be greeted by spacious living areas featuring high ceilings and an abundance of natural light. The gourmet kitchen is a chef's dream, equipped with a premium Thor gas stove, a wine cooler, and sleek countertops, perfect for both everyday meals and entertaining guests.

The home offers a generous bonus room that can be

transformed into a home theater, office, or playroom – whatever suits your lifestyle. The master suite is a true oasis, offering a tranquil escape with a private en-suite bathroom and a large walk-in closet.

Outside, enjoy your own private paradise with a sparkling pool surrounded by beautifully landscaped grounds, ideal for relaxing or hosting gatherings. The expansive 4.5-acre lot provides plenty of space for outdoor activities, with room for gardening, play, or even expansion.

Located in a highly sought-after neighborhood, this home offers the perfect balance of serenity and convenience. Don't miss the opportunity to own this exceptional property—schedule your showing today!



PROPERTY FEATURES

PRICE: **\$545,000** | COUNTY: **FAULKNER** | STATE: **ARKANSAS** | ACRES: **4.5**

- Custom built home
- 4.5 +/- acres
- Prime location
- 2,954 +/- square feet
- 4 bedroom
- 4 bathroom
- Bonus room
- Swimming pool
- Basketball court
- Attached garage



CUSTOM BUILT HOME



4.5 +/- ACRES



SWIMMING POOL + BASKETBALL COURT



4 BEDROOM, 4 BATHROOM



ADDITIONAL PHOTOS



AERIAL MAP



TOPOGRAPHY MAP



©2025 AgriData, Inc.



Maps Provided By:



© AgriData, Inc. 2023 www.AgriDataInc.com

Source: USGS 1 meter dem

Interval(ft): 2.0

Min: 356.7

Max: 401.7

Range: 45.0

Average: 379.0

Standard Deviation: 9.88 ft

0ft 166ft 332ft



2/10/2025

31-7N-13W
Faulkner County
Arkansas

Boundary Center: 35° 11' 37.7, -92° 25' 55.31

WETLANDS MAP



State: **Arkansas**
 Location: **31-7N-13W**
 County: **Faulkner**
 Township: **Clifton**
 Date: **2/10/2025**



Maps Provided By:

 CUSTOMIZED ONLINE MAPPING
 © AgriData, Inc. 2023 www.AgriDataInc.com

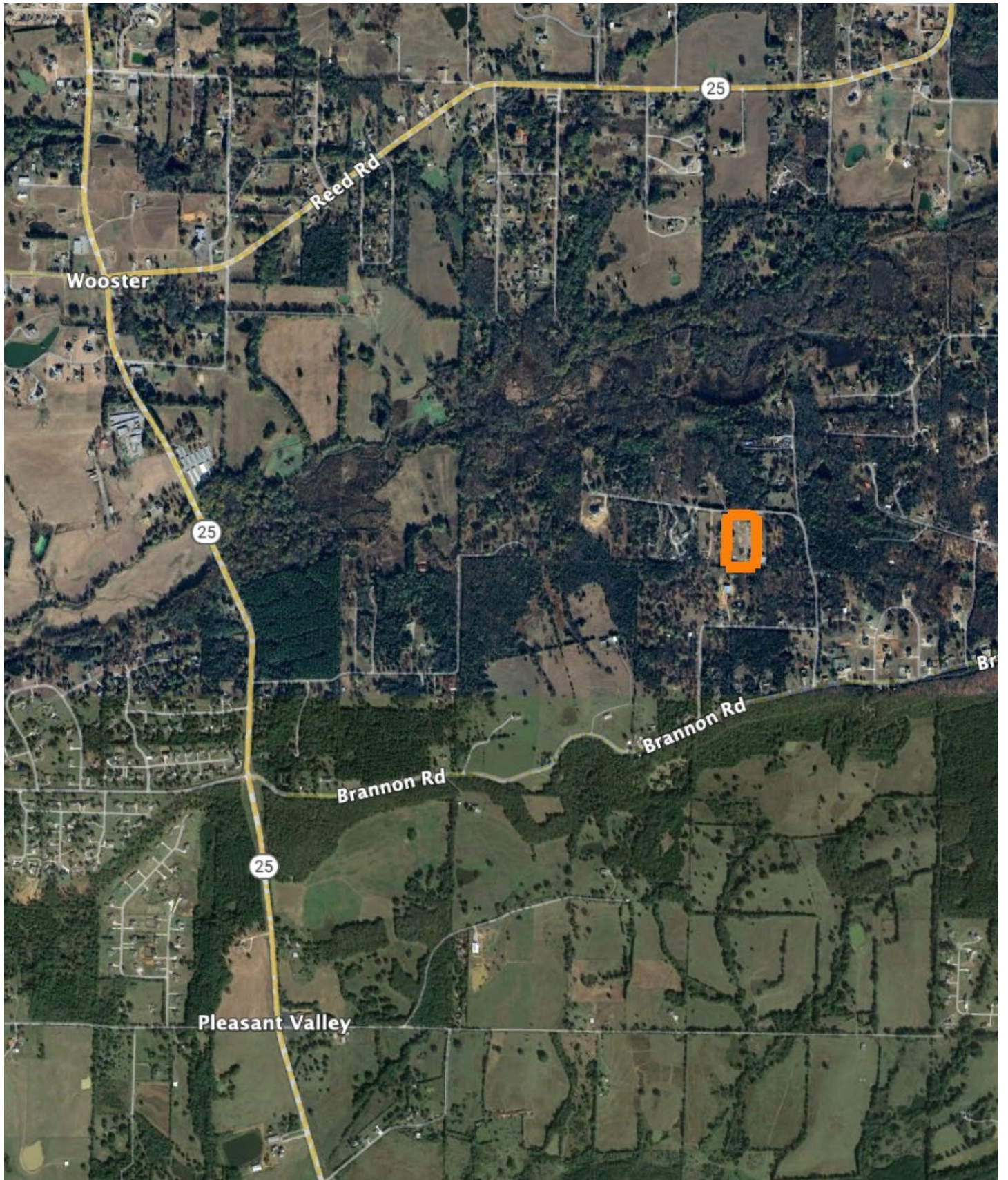


0ft 242ft 483ft

Classification Code	Type	Acres
		Total Acres 0.00

Data Source: National Wetlands Inventory website. U.S. DoI, Fish and Wildlife Service, Washington, D.C. <http://www.fws.gov/wetlands/>

OVERVIEW MAP



AGENT CONTACT

There's no doubt Ray Scheide has a passion for the outdoors. At Midwest Land Group, he's able to wake up every morning excited about his job, working for a company he's proud to represent. Ray brings great knowledge of the outdoors to every interaction, offering the best service he knows how to each and every client. From listing to closing, it's his mission to bring people together as they make a big life decision. Ray was born in Washington, D.C., and graduated from the University of Arkansas—Fort Smith. A two-time FLW Tour Champion, Ray spent 11 years as a professional fisherman, and served as only one of 12 representatives from the U.S. in the Eurocup in Spain. During his tenure as a professional angler, he marketed himself to large corporate brands and served as an ambassador in the fishing industry. With great desire to share his passion with kids, Ray developed the first high school fishing team in Arkansas that was the largest in the state for five years, and averaged 125 youths for whom he'd help host a tournament circuit for and take them all over the United States to compete in national events. When he's not out fishing, you can probably find him hunting or traveling. Ray lives in Dover, Arkansas, with his wife, Michelle, son, Corey, and daughter, Mikayla. Call Ray today to experience the Midwest Land Group difference!



RAY SCHEIDE, LAND AGENT
479.886.5312
RScheide@MidwestLandGroup.com



MidwestLandGroup.com

This property is being offered by Midwest Land Group, LLC. 913.674.8010. All information provided by Midwest Land Group, LLC or their agents was acquired from sources deemed accurate and reliable, however we do not warrant its accuracy or completeness. Midwest Land Group, LLC assumes no liability for error, omission or investment results. Midwest Land Group, LLC. Licensed in Arkansas, Illinois, Iowa, Kansas, Minnesota, Missouri, Nebraska, Oklahoma, South Dakota, Tennessee, Texas, Wisconsin, and Wyoming.