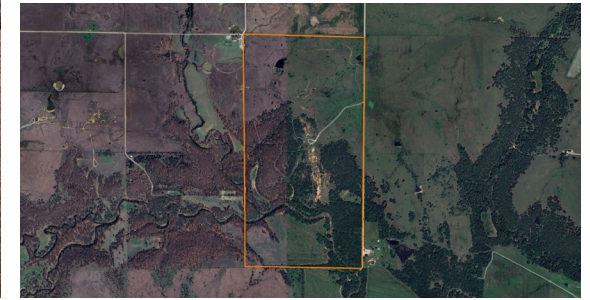


LAND FOR SALE

# SOUTHEAST KANSAS FARM WITH TOP NOTCH HUNTING

PRICE: **\$1,331,525**  
COUNTY: **ELK/CHAUTAUQUA**  
STATE: **KANSAS**  
ACRES: **313.3**



## PROPERTY FEATURES

- Kansas Deer Management Unit 12
- Southeast Waterfowl Zone
- Electric on site
- Fenced
- 4 ponds
- 8 +/- acre duck marsh
- Multiple established food plots
- 4 Redneck Tower Blinds
- Three 1,000-pound feeders
- Two 2,000-pound feeders
- Salt Creek
- Pan Creek
- Dead-end road
- Managed whitetail population
- Mineral rights transfer
- 2024 Taxes \$ 1,237

For more information, contact:

**BEN JACKS**, Land Agent

**580.304.9109** | [BJacks@MidwestLandGroup.com](mailto:BJacks@MidwestLandGroup.com)

**MidwestLandGroup.com**

