

MIDWEST LAND GROUP PRESENTS

199 ACRES IN

---

# STONE COUNTY MISSOURI



[MidwestLandGroup.com](http://MidwestLandGroup.com)

MIDWEST LAND GROUP IS HONORED TO PRESENT

# 199 ACRES ON TABLE ROCK LAKE

---

Nestled on the shores of Table Rock Lake, this expansive 199 +/- acre property is a rare opportunity to own a private Ozarks waterfront retreat. Drive through the gated entrance and follow the well-maintained road lined with towering mature White Oaks, guiding you to a charming cabin perfectly positioned to capture the breathtaking, million-dollar lake views.

Boasting ample room for additional homesites, you can choose to build along the long open ridge tops or closer to the lake's edge on a lower point that offers near-waterfront living. Recently cleared areas showcase panoramic views, and winding trails invite you to explore more of the acreage. With only a few feet of Corps of

Engineers land separating you from the lake, this property provides some of the most authentic Table Rock Lake frontage you'll find.

Electricity is readily accessible, and the land features marketable timber for potential investment or aesthetic appeal. Outdoorsman will appreciate the excellent hunting and the convenience of being within walking distance of Jessie Hollow Conservation Area. Located just 27 miles from Branson and 15 minutes from Cape Fair and the nearest boat dock, these parcels strike the perfect balance between seclusion and accessibility - without any restrictions or HOA to limit your vision. Discover your ultimate Ozarks escape on Table Rock Lake.



# PROPERTY FEATURES

PRICE: **\$1,320,000** | COUNTY: **STONE** | STATE: **MISSOURI** | ACRES: **199**

- Table Rock Lake frontage
- Incredible lake views
- Established trail system
- Electricity on site
- Small cabin
- Mature timber
- Within 30 minutes of Branson
- Great hunting
- Secluded



# 199 ACRES

---



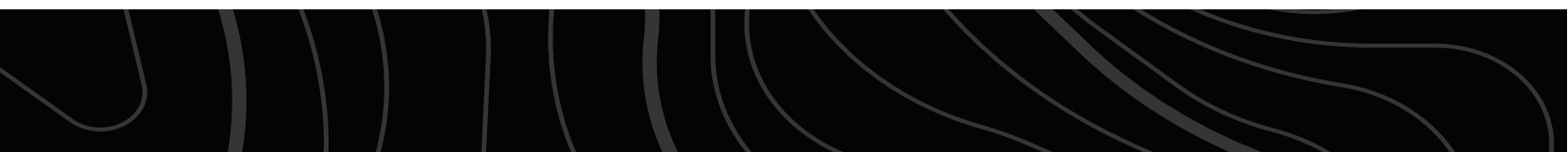
# TABLE ROCK LAKE FRONTAGE

---



## INCREDIBLE LAKE VIEWS

---



# ESTABLISHED TRAIL SYSTEM

---

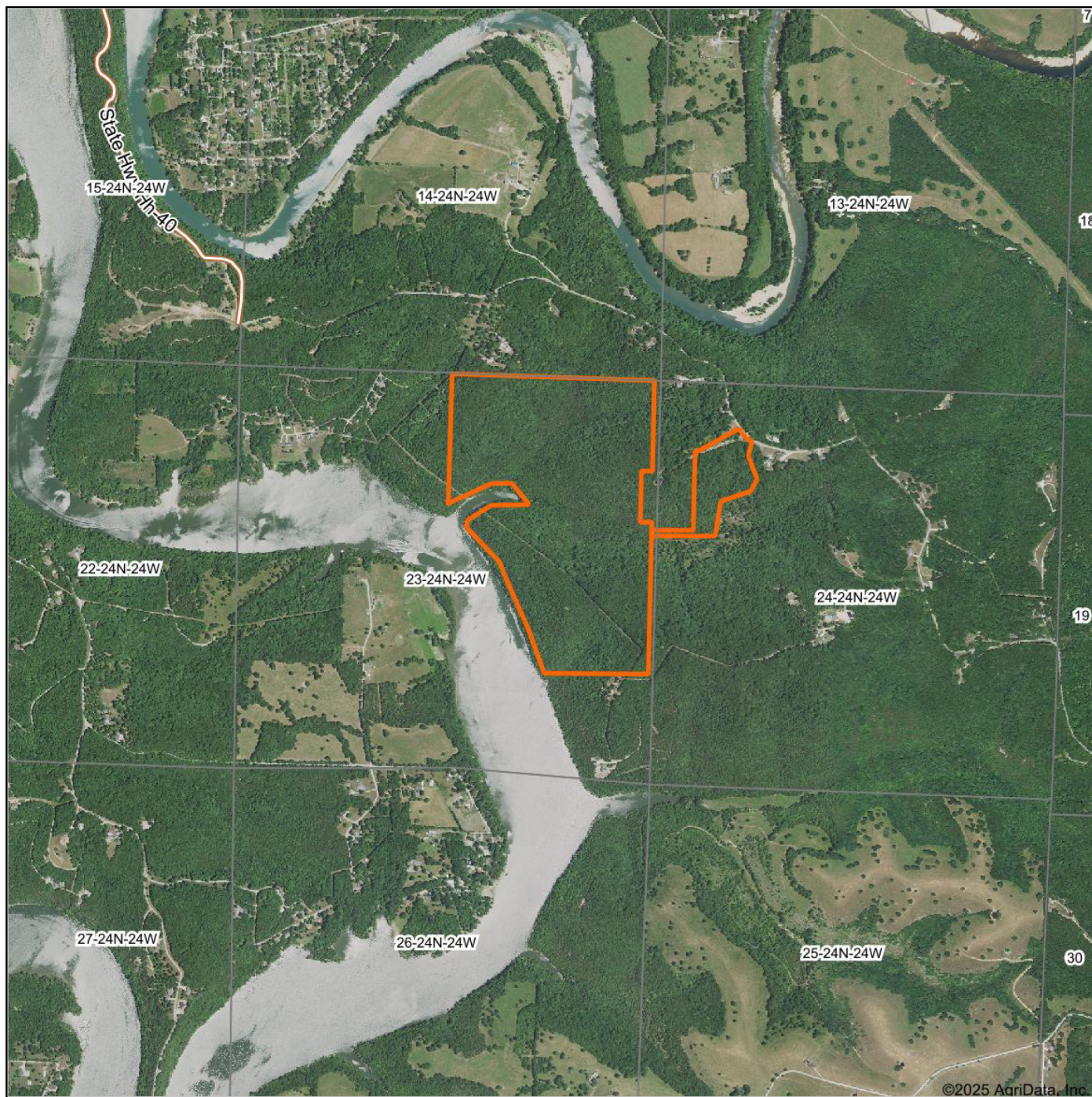
Recently cleared areas showcase panoramic views, and winding trails invite you to explore more of the acreage.



# SMALL CABIN

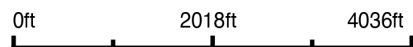


# AERIAL MAP



©2025 AgriData, Inc.

Boundary Center: 36° 46' 20.02, -93° 29' 17.47



Maps Provided By:



© AgriData, Inc. 2023 www.AgriDataInc.com

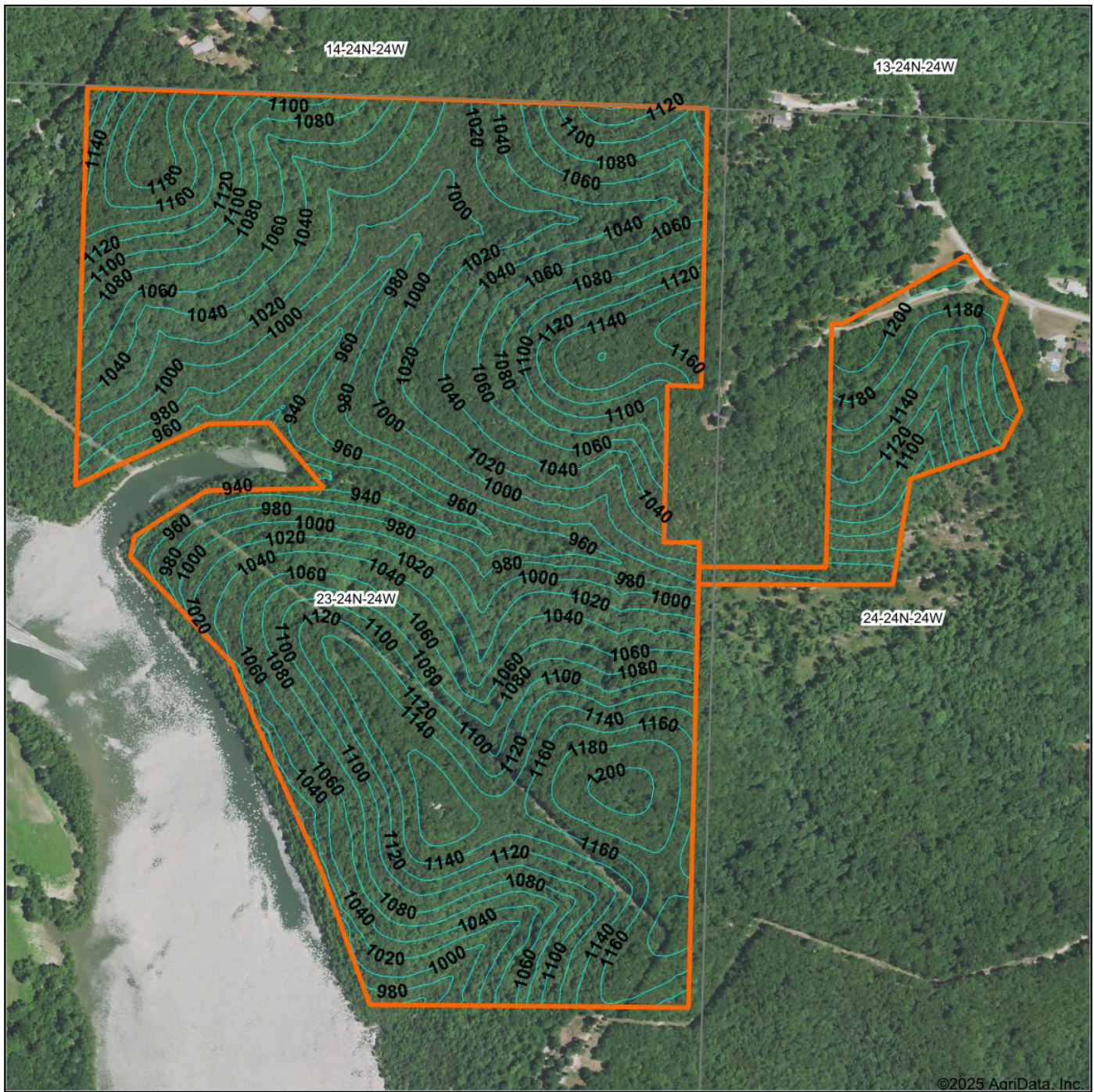
**23-24N-24W**  
**Stone County**  
**Missouri**



1/9/2025



# TOPOGRAPHY MAP



©2025 AgriData, Inc.



Maps Provided By:  
  
 CUSTOMIZED ONLINE MAPPING  
 © AgriData, Inc. 2023 www.AgriDataInc.com

Source: USGS 3 meter dem  
 Interval(ft): 20.0  
 Min: 913.3  
 Max: 1,215.1  
 Range: 301.8  
 Average: 1,068.8  
 Standard Deviation: 68.01 ft

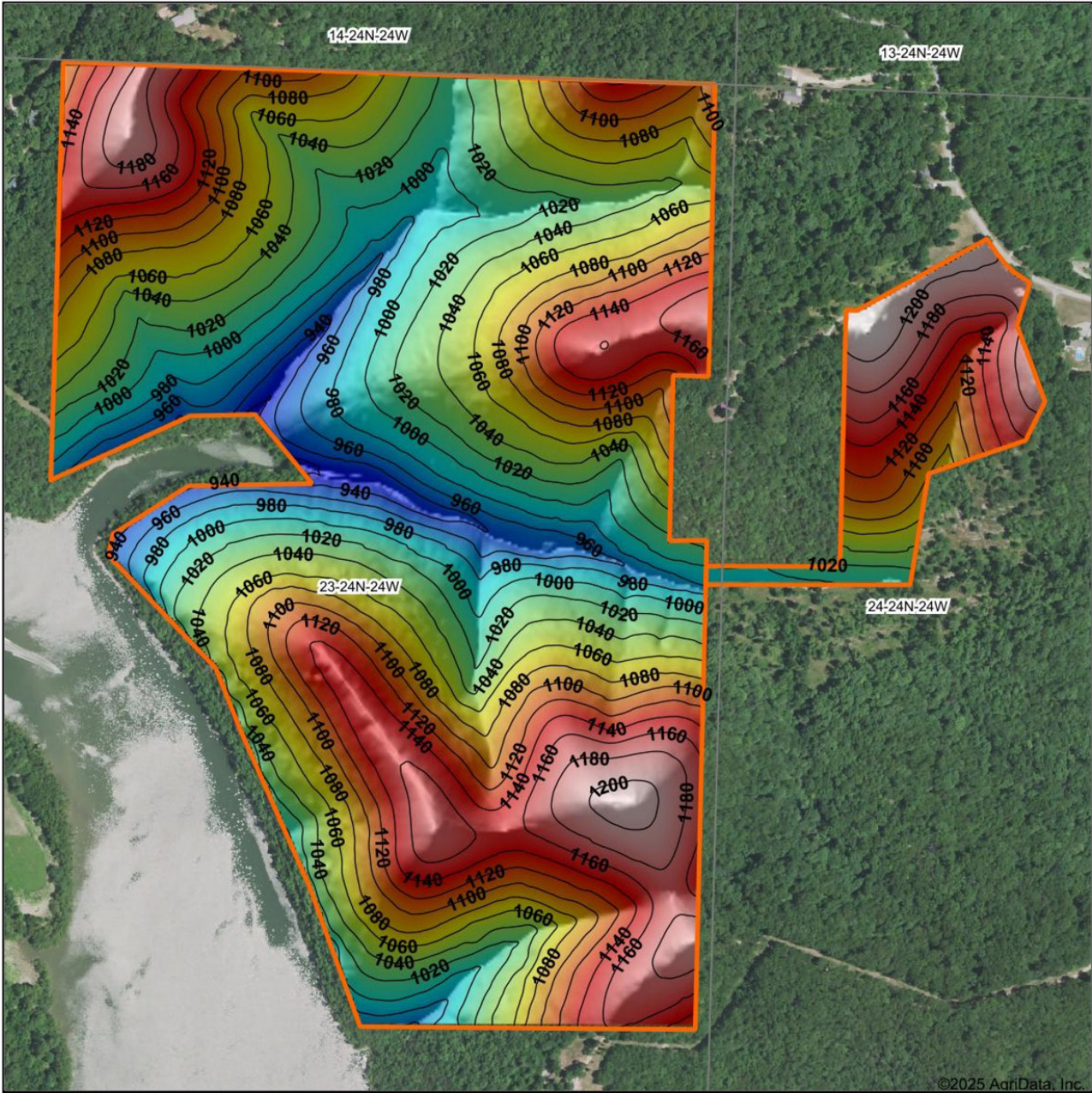


1/9/2025

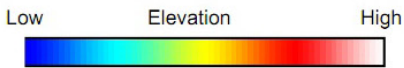
**23-24N-24W**  
**Stone County**  
**Missouri**

Boundary Center: 36° 46' 20.02, -93° 29' 17.47

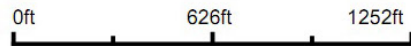
# HILLSHADE MAP



©2025 AgriData, Inc.



Source: USGS 3 meter dem  
 Interval(ft): 20  
 Min: 913.3  
 Max: 1,215.1  
 Range: 301.8  
 Average: 1,068.8  
 Standard Deviation: 68.01 ft



1/9/2025

**23-24N-24W**  
**Stone County**  
**Missouri**

Boundary Center: 36° 46' 20.02, -93° 29' 17.47

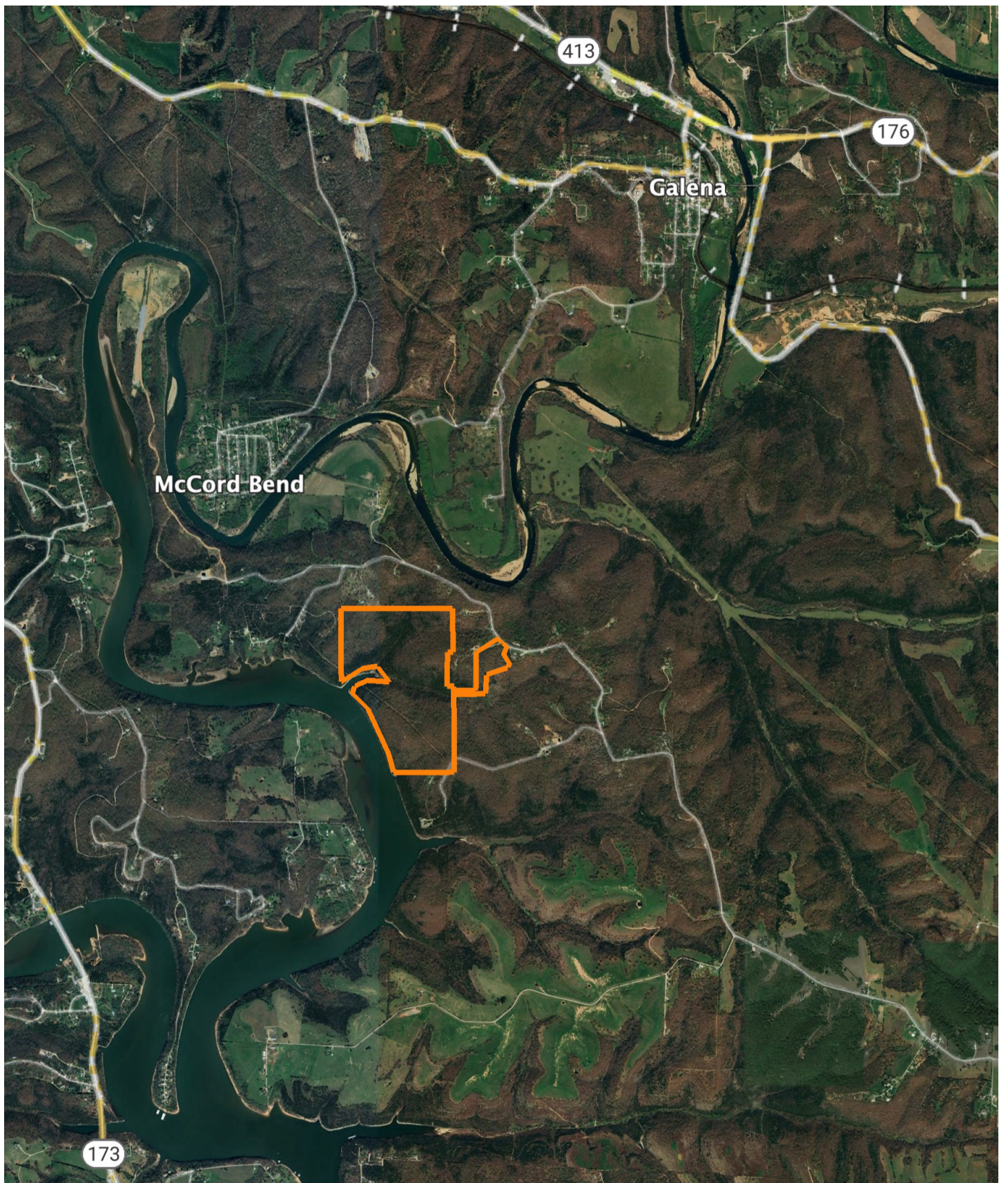


Maps Provided By:



© AgriData, Inc. 2023 www.AgriDataInc.com

# OVERVIEW MAP



# AGENT CONTACT

Looking for land or selling a piece of property can be stressful or overbearing, but not if you're working with the right agent. Bjorn Wilkerson is all about making sure each client has an enjoyable experience from start to finish. A lifelong lover of the outdoors, Bjorn has a background in agriculture and a passion for all things outdoors. This includes hunting, fishing, camping, traveling, hiking, and land management, not to mention his personal favorites: spring turkey hunting, whitetail hunting, and bowfishing. Born in West Plains, Missouri, Bjorn attended Couch High School and graduated from Missouri State University—Springfield with a degree in Wildlife Management. Before coming to Midwest Land Group, he worked in agriculture and operations with Archer Daniels Midland (ADM), a human and animal nutrition company specializing in agricultural origination and processing, where he worked his way around the company, serving in a variety of positions, everything from trainee, plant manager, and recruiter to new manager development specialist and continuous improvement practitioner. Being a service to someone looking for hunting or farming property is what drives Bjorn. He wants each experience to not only be enjoyable, but seamless as well. If you're in the market to sell or buy land, give Bjorn a call.



**BJORN WILKERSON,**  
LAND AGENT  
**417.233.1243**  
BWilkerson@MidwestLandGroup.com



**MidwestLandGroup.com**

This property is being offered by Midwest Land Group, LLC. 913.674.8010. All information provided by Midwest Land Group, LLC or their agents was acquired from sources deemed accurate and reliable, however we do not warrant its accuracy or completeness. Midwest Land Group, LLC assumes no liability for error, omission or investment results. Midwest Land Group, LLC. Licensed in Arkansas, Illinois, Iowa, Kansas, Minnesota, Missouri, Nebraska, Oklahoma, South Dakota, Tennessee, Texas, Wisconsin, and Wyoming.