

LAND FOR SALE

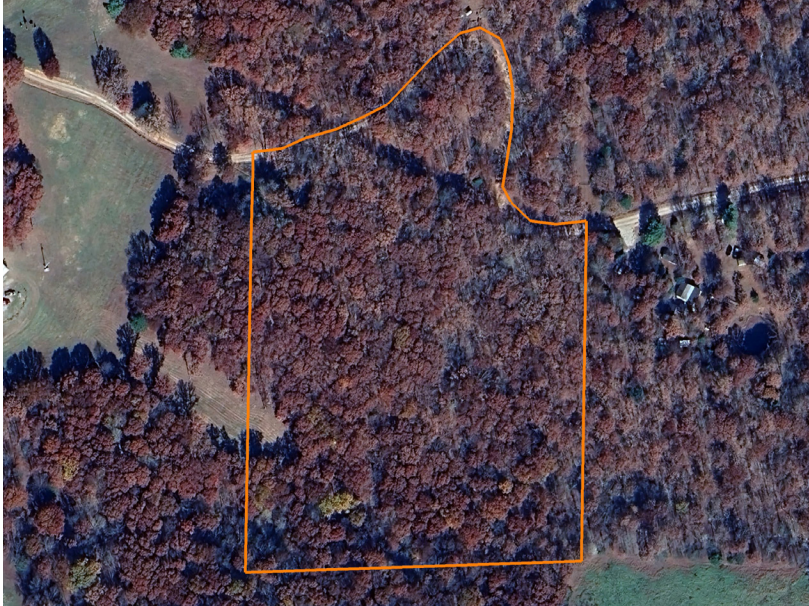
# THE PERFECT SPOT TO PLANT YOUR ROOTS

PRICE: **\$52,000**

COUNTY: **MADISON**

STATE: **ARKANSAS**

ACRES: **8**



## PROPERTY FEATURES

- County road frontage
- Overhead power already on site
- Beautiful build sites
- Completed soil analysis
- Mature oak trees
- Small wet-weather stream
- Low maintenance
- Home to deer and other wildlife
- Close proximity to War Eagle Creek
- Close proximity to thousands of acres of public land
- Close to ATV trails
- Less than 1 hour from Fayetteville
- Less than 30 minutes to Huntsville

For more information, contact:

**CHRIS SHADRICK**, Land Agent

**479.487.1647** | [CShadrick@MidwestLandGroup.com](mailto:CShadrick@MidwestLandGroup.com)

**MidwestLandGroup.com**



This property is being offered by Midwest Land Group, LLC, 7111 W. 151st Street, Ste. 27, Overland Park, KS 66223, 913.674.8010. Licensed in AL, AR, IL, IA, KS, KY, LA, MN, MS, MO, MT, NE, OH, OK, SD, TN, TX, WI, and WY.