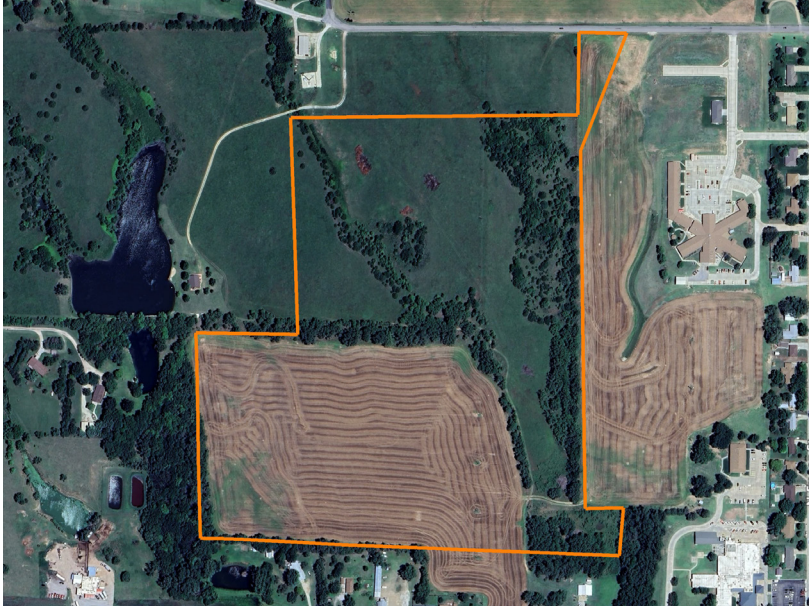


LAND FOR SALE

# DEVELOPMENT LAND IN KINGMAN, KANSAS

PRICE: **\$288,000**  
COUNTY: **KINGMAN**  
STATE: **KINGMAN**  
ACRES: **58**



## PROPERTY FEATURES

- 28.58 acres dryland
- 29.02 acres native grass
- 2024 taxes \$1,050
- Zoned agricultural
- Off paved road
- Electricity and gas on property
- City water nearby
- Small pond
- Passive crop income opportunity
- Many options for home location or lot splits
- 45 miles to Wichita, 38 miles to Hutchinson, & 35 miles to Pratt



For more information, contact:

**TYLER HEIL**, Land Agent

**620.869.7083** | [THeil@MidwestLandGroup.com](mailto:THeil@MidwestLandGroup.com)

**MidwestLandGroup.com**

