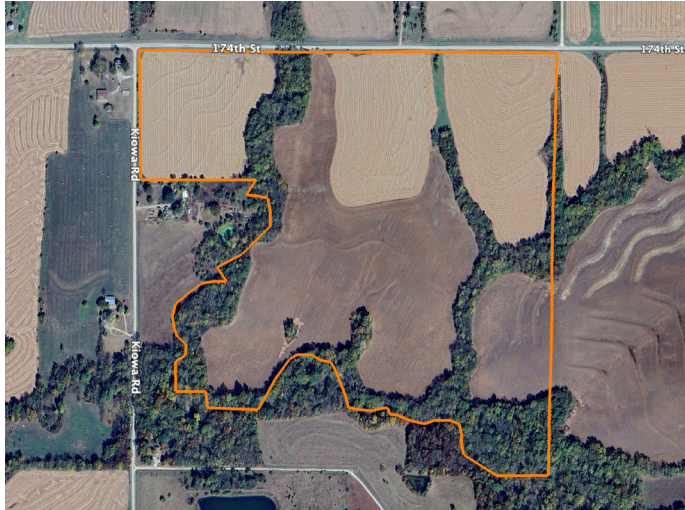


LAND FOR SALE

ATTRACTIVE FARMLAND IN JEFFERSON COUNTY



PROPERTY FEATURES

- 99 +/- tillable acres - Class II and III soils
- Well-kept terraces, waterways, and field edges
- Wet-weather creek
- Road frontage on 2 sides
- Multiple build sites
- Electricity and rural water at the road
- Mineral rights intact and transfer
- 7 miles from Nortonville, KS
- 4.9 miles from Valley Falls, KS
- 37 miles from Topeka, KS



PRICE: **\$671,000**

COUNTY: **JEFFERSON**

STATE: **KANSAS**

ACRES: **122**

For more information, contact:

DREW YARKOSKY, Land Agent

816.599.3647 | DYarkosky@MidwestLandGroup.com

MidwestLandGroup.com BUYERS, SELLERS, AND LAND – CONNECTED

This property is being offered by Midwest Land Group, LLC, 7111 W. 151st Street, Ste. 27, Overland Park, KS 66223, 913.674.8010.
Licensed in AL, AR, IL, IN, IA, KS, KY, LA, MN, MS, MO, MT, NE, OH, OK, SD, TN, TX, WI, and WY.

