

MIDWEST LAND GROUP PRESENTS

18.93 ACRES IN

GREENE COUNTY ARKANSAS



MidwestLandGroup.com

MIDWEST LAND GROUP IS HONORED TO PRESENT

18.93 ACRES IN FINCH, ARKANSAS – PRIME HOMESITE NEAR LAKE FRIERSON WITH UTILITIES READY

Located in the heart of the Finch community in Greene County, Arkansas, this 18.93 acre property offers the perfect opportunity to build your forever home. With 1,520 feet of road frontage and a roughed-in driveway on the southeast corner, access is already in place, making development straightforward and convenient. Rural water, electricity, and fiber are available at the road, ensuring you have the utilities necessary to create a comfortable and modern living space.

The property's location provides an ideal blend of rural seclusion and accessibility to nearby amenities. Just 4.5 miles from Lake Frierson State Park, you'll enjoy easy access to outdoor activities such as fishing, hiking, and boating. For shopping, dining, and entertainment, the property is conveniently situated 13 miles from Jonesboro and 14 miles from Paragould. Whether you're looking for a private retreat or a well-connected homesite, this property is a rare find in a growing area.



PROPERTY FEATURES

PRICE: **\$150,000** | COUNTY: **GREENE** | STATE: **ARKANSAS** | ACRES: **18.93**

- Finch, AR area between Jonesboro and Paragould
- 1,520 feet of road frontage
- Roughed-in drive on the SE corner
- Rural water is available at the road
- Electric and fiber available at the road
- 4.5 miles from Lake Frierson State
- 13 miles from Jonesboro, AR
- 14 miles from Paragould, AR
- Incredible property for your forever home



PRIME HOMESITE

With 1,520 feet of road frontage and a roughed-in driveway on the southeast corner, access is already in place, making development straightforward and convenient.



TOPOGRAPHY MAP



Maps Provided By:



© AgriData, Inc. 2023

www.AgriDataInc.com

Source: USGS 1 meter dem

Interval(ft): 2.0

Min: 423.4

Max: 468.4

Range: 45.0

Average: 450.6

Standard Deviation: 11.65 ft

0ft 269ft 539ft

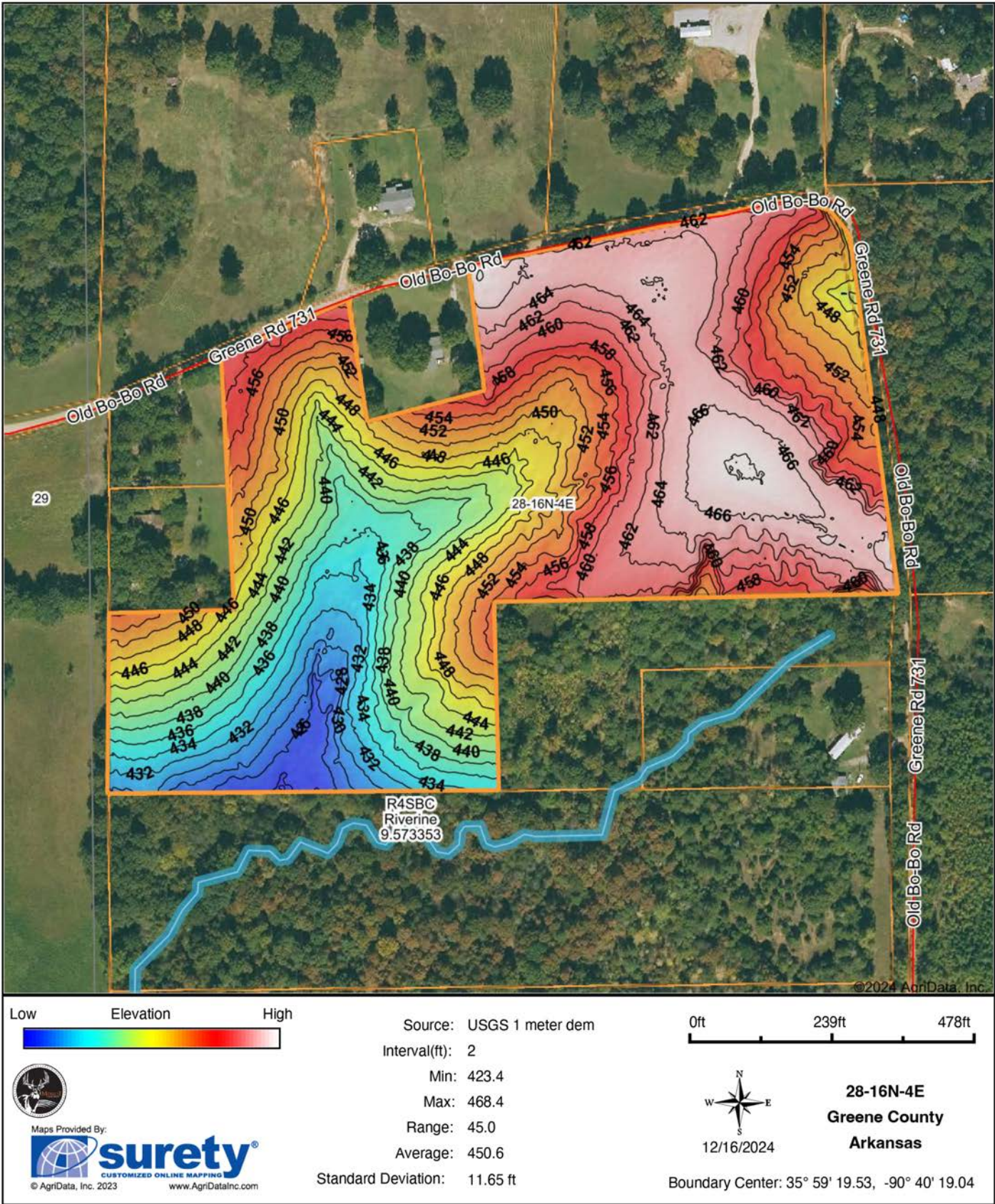


12/16/2024

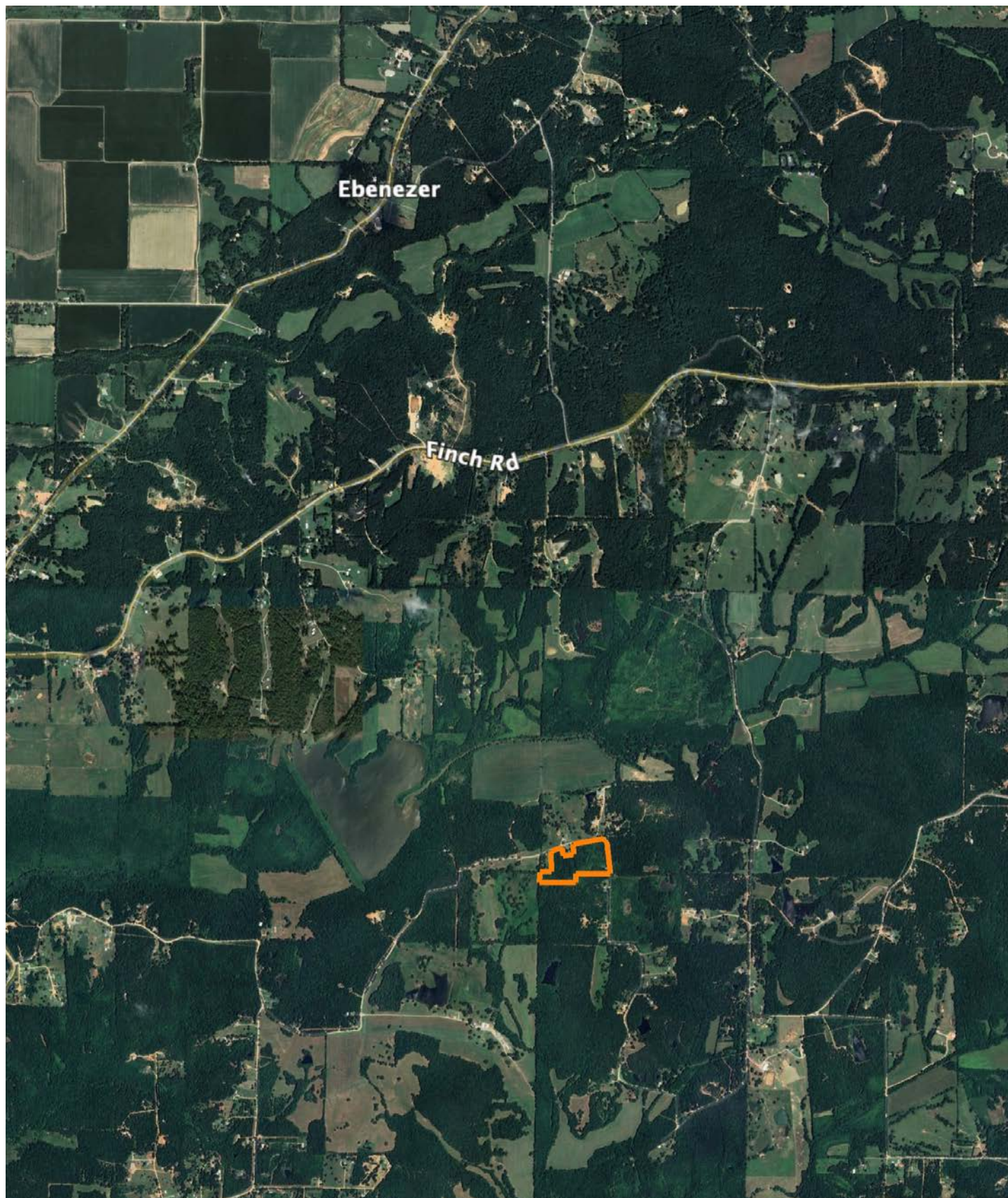
28-16N-4E
Greene County
Arkansas

Boundary Center: 35° 59' 19.53, -90° 40' 19.04

HILLSHADE MAP



OVERVIEW MAP



AGENT CONTACT

At the heart of Arkansas' vibrant land sales market is Tanner K Hoke, a land agent with Midwest Land Group who brings a fresh perspective and a deep-rooted passion for the land to every transaction. Tanner's journey from the fields of Jonesboro, where he was born, to his current home in Paragould, where he lives with his wife Jessie and their children, Hallie and Hudson, is a testament to his commitment to the Arkansas community and its land. His upbringing in a region known for its rich agricultural heritage, has equipped him with a unique blend of skills and insights invaluable to both buyers and sellers in the land market.

Tanner's approach to land sales is deeply influenced by his personal passions and professional experiences. With over a decade of involvement in row crop farming and a lifetime spent hunting across the country, Tanner has cultivated an extensive knowledge of land value, wildlife management, and agricultural practices. His hobbies, which include everything from snow skiing to land improvement, not only enrich his life but also enhance his ability to connect with clients over shared interests, making him a relatable and trusted advisor in their land transactions.

What distinguishes Tanner in the competitive field of real estate is his philosophy that every sale is an opportunity to forge lasting relationships, not just complete a business transaction. His personable nature and extensive network are invaluable assets in bringing together buyers and sellers, creating matches that fulfill dreams and respect the intrinsic value of the land. For those seeking to navigate the complexities of buying or selling property in Arkansas, Tanner Hoke offers not just his services, but a partnership grounded in respect, passion, and a shared love for the great outdoors.



TANNER HOKE,
LAND AGENT

870.637.0261

THoke@MidwestLandGroup.com



MidwestLandGroup.com

This property is being offered by Midwest Land Group, LLC. 913.674.8010. All information provided by Midwest Land Group, LLC or their agents was acquired from sources deemed accurate and reliable, however we do not warrant its accuracy or completeness. Midwest Land Group, LLC assumes no liability for error, omission or investment results. Midwest Land Group, LLC. Licensed in Arkansas, Illinois, Iowa, Kansas, Minnesota, Missouri, Nebraska, Oklahoma, South Dakota, Tennessee, Texas, Wisconsin, and Wyoming.