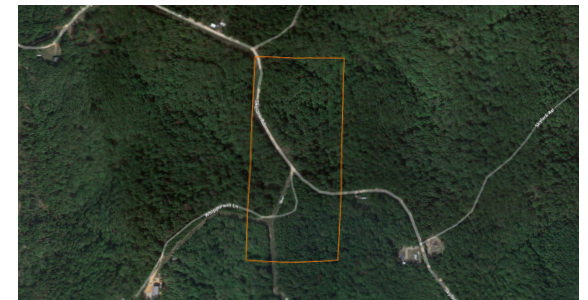


LAND FOR SALE

PRIME BUILD-READY ACREAGE WITH HIGHWAY FRONTAGE IN POLK COUNTY

PRICE: **\$85,500**
COUNTY: **POLK**
STATE: **MISSOURI**
ACRES: **9**



PROPERTY FEATURES

- 9 +/- acres
- Multiple build sites
- Utilities available
- Recreational use
- Rural setting with modern conveniences nearby
- State Road frontage
- Scenic and peaceful environment
- Close to Stockton Lake
- 35 minutes from Springfield
- 25 minutes from Bolivar



For more information, contact:

BEAU MANTLE, Land Agent

417.883.5515 | BMantle@MidwestLandGroup.com

MidwestLandGroup.com

