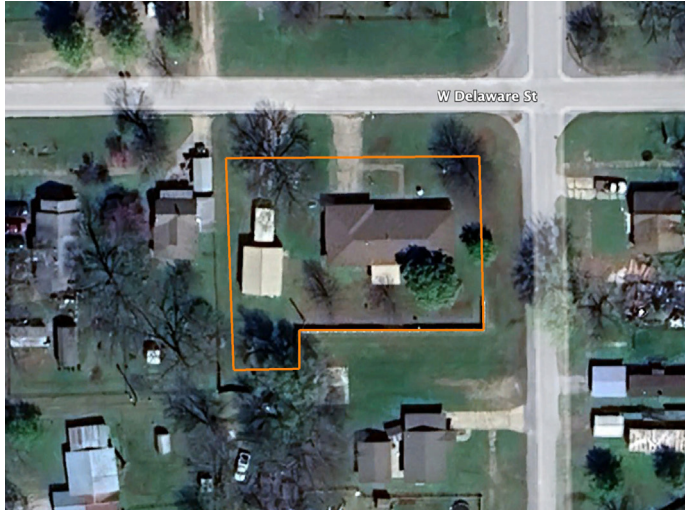


LAND FOR SALE

CHARMING HOME IN CLEVELAND CLOSE TO KEYSTONE LAKE



PROPERTY FEATURES

- 1,860 +/- square foot house
- 3 bed, 2.5 bath, 2 car attached garage
- Abundant storage in the garage and utility room
- 3 lots totaling over .4 acres
- Corner lot with mature trees
- Vinyl and wood privacy fencing
- 30'x40' shop with overhead door and detached carport
- Less than 4 miles from Feyodi Boat Ramp at Keystone Lake



For more information, contact:

LAUREN McDONALD, Land Agent

918.928.3345 | LMcDonald@MidwestLandGroup.com

MidwestLandGroup.com BUYERS, SELLERS, AND LAND – CONNECTED

Midwest Land Group, LLC, 913.674.8010, Licensed in Arkansas, Illinois, Iowa, Kansas, Minnesota, Missouri, Nebraska, Oklahoma, South Dakota, Tennessee, Texas, Wisconsin, and Wyoming.



PRICE: **\$230,000**

COUNTY: **PAWNEE**

STATE: **OKLAHOMA**

ACRES: **.4**

