

MIDWEST LAND GROUP PRESENTS

.2 ACRES IN

LINN COUNTY IOWA

3516 FITZROY ROAD, HIAWATHA, IOWA, 52233



MidwestLandGroup.com

MIDWEST LAND GROUP IS HONORED TO PRESENT

BEAUTIFUL RANCH HOME IN HIAWATHA

Don't miss this beautiful home located in a highly desirable area. This ranch home includes 5 beds and 3.5 baths, a kitchen with granite countertops, and stainless steel appliances. The master bedroom consists of a large tub, shower, and walk-in closet to the main level laundry

room. The main level includes two additional baths and bedrooms. The lower level has a family room with a wet bar and a 2nd fireplace. The fenced-in backyard is a perfect spot for kids and pets.



PROPERTY FEATURES

PRICE: **\$499,999** | COUNTY: **LINN** | STATE: **IOWA** | ACRES: **.2**

- 5 bed, 3.5 bath
- Ideally located in Hiawatha
- Large backyard
- Two fireplaces
- Main level laundry
- Main level master bedroom
- Granite countertops
- Fenced-in backyard
- Open Concept
- Finished basement

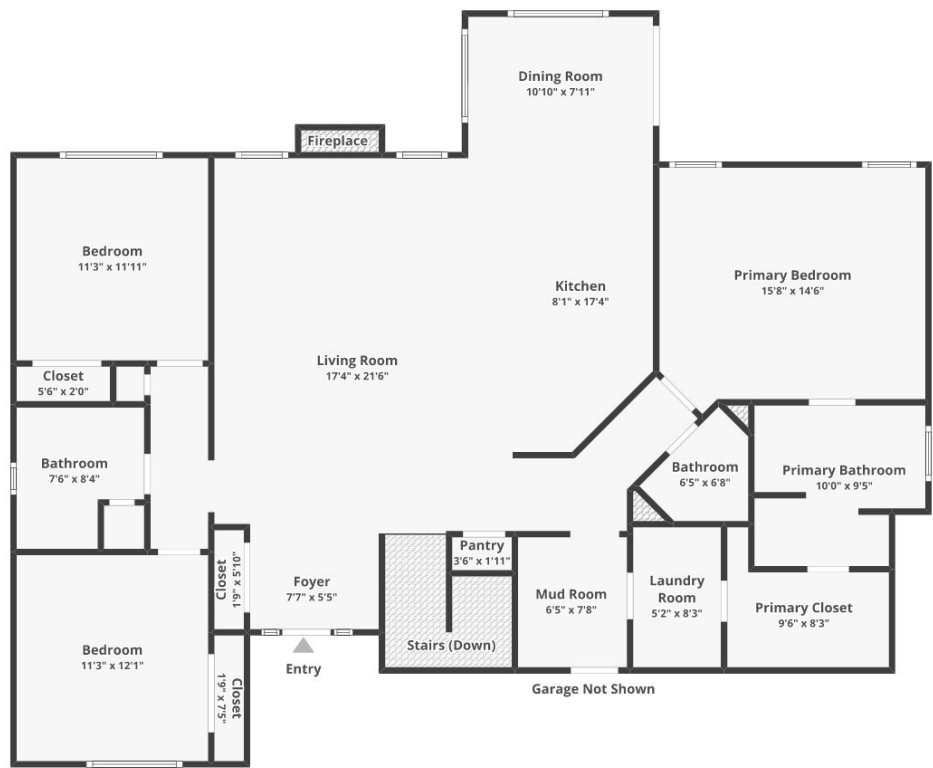


3,085 SQUARE FOOT HOME

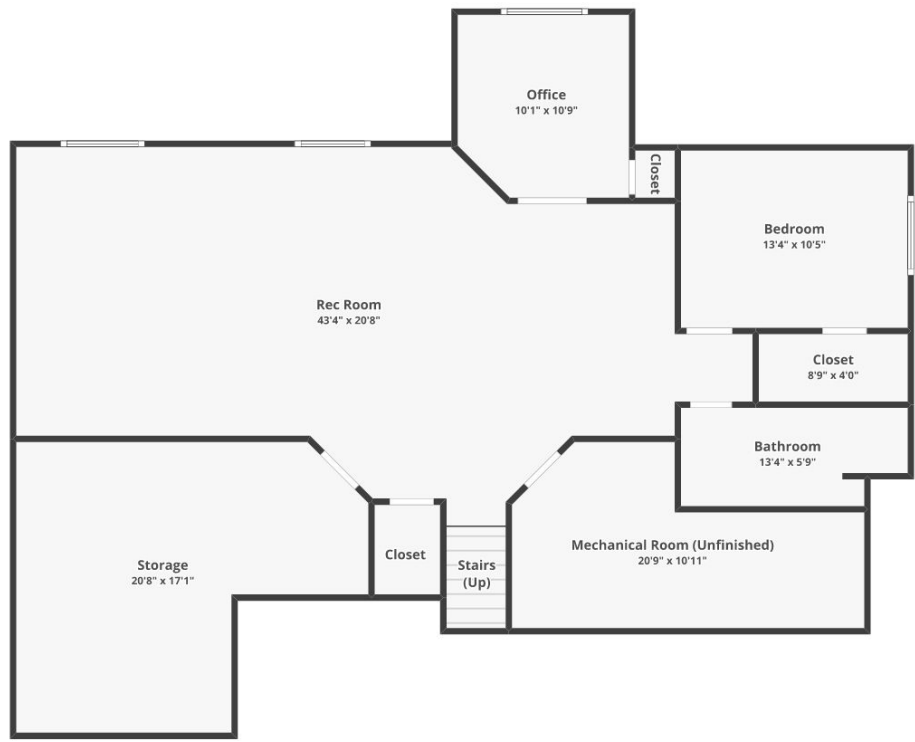
This ranch home includes 5 beds and 3.5 baths, a kitchen with granite countertops, and stainless steel appliances. The main level includes two additional baths and bedrooms.



FLOOR PLAN



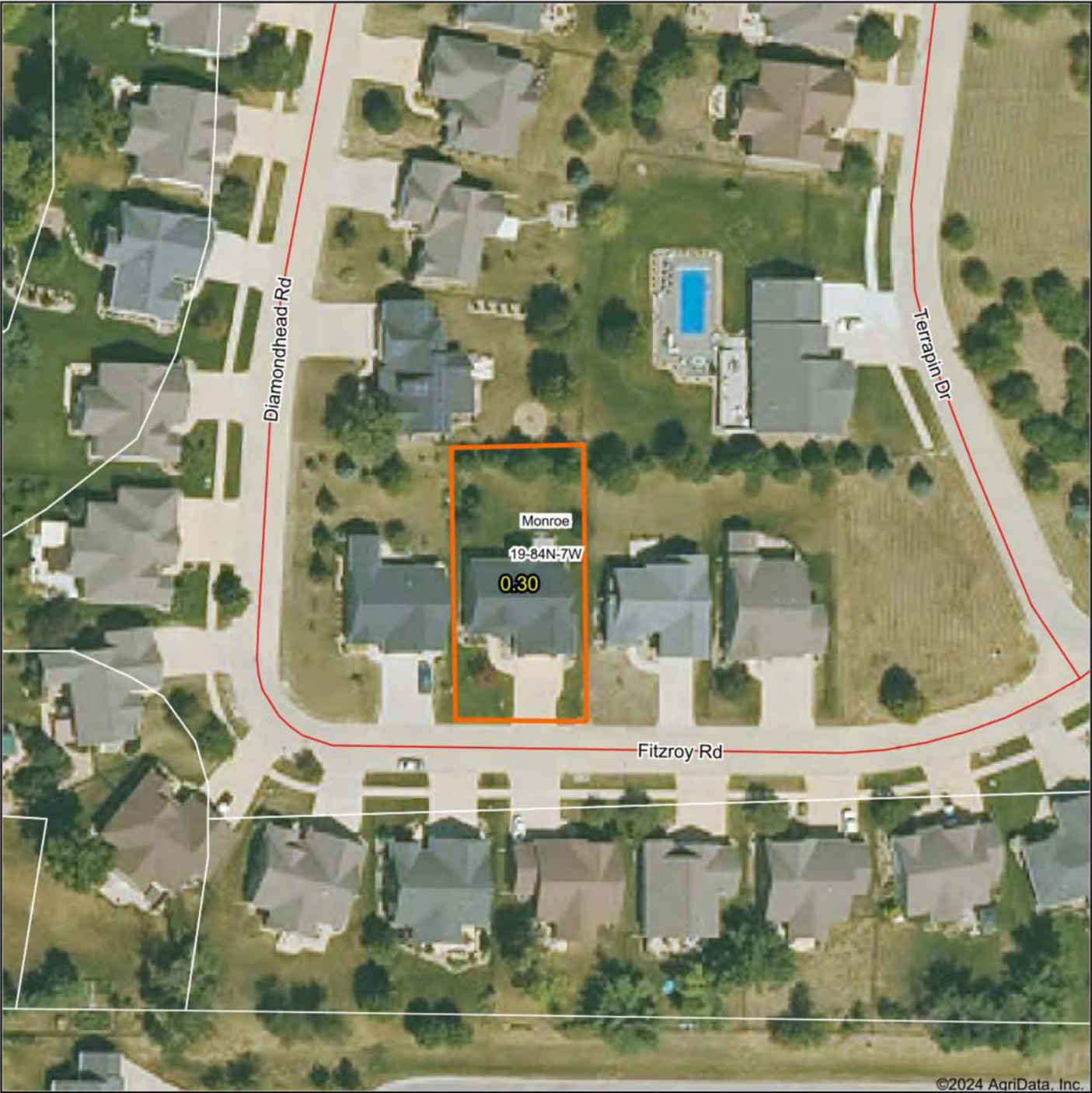
FLOOR 1



BASEMENT

Floor plans/tour cannot be used for building or design purposes. Sizes and dimensions are approximate.

AERIAL MAP



©2024 AgriData, Inc.

Boundary Center: 42° 4' 37.1, -91° 42' 32.05

0ft 93ft 186ft



Maps Provided By:
surety
CUSTOMIZED ONLINE MAPPING
© AgriData, Inc. 2023 www.AgriDataInc.com

19-84N-7W
Linn County
Iowa



11/5/2024

Field borders provided by Farm Service Agency as of 5/21/2008

OVERVIEW MAP



AGENT CONTACT

Riley Shey, a devoted land agent at Midwest Land Group, epitomizes the perfect blend of passion and expertise in Eastern Iowa's real estate market. Originally from Cedar Rapids, IA, Riley now calls it home with his fiancée, Kylie, and their beloved canine companions, Gus and Penelope. His journey into real estate naturally evolved from his profound love for the great outdoors.

While pursuing a criminal justice degree at Loras College, Riley's career trajectory shifted when he seized an opportunity in law enforcement. Over 4.5 years in this field, he honed invaluable interpersonal skills and a knack for problem-solving. However, Riley's true calling emerged from his lifelong connection to the land and rural living.

Growing up immersed in hunting, hiking, and camping, Riley developed an unwavering appreciation for nature. Managing 350 acres of family hunting property provided him with hands-on experience in land stewardship and conservation practices. With a steadfast commitment to client satisfaction and a reputation for transparency and diligence, Riley stands out as a trusted ally in the pursuit of the perfect property. Whether listing a farm or fulfilling dreams of rural living, Riley Shey embodies professionalism and passion in land sales, making him the go-to choice for discerning clients across Eastern Iowa.



RILEY SHEY

LAND AGENT

319.302.9007

RShey@MidwestLandGroup.com



MidwestLandGroup.com

This property is being offered by Midwest Land Group, LLC. 913.674.8010. All information provided by Midwest Land Group, LLC or their agents was acquired from sources deemed accurate and reliable, however we do not warrant its accuracy or completeness. Midwest Land Group, LLC assumes no liability for error, omission or investment results. Midwest Land Group, LLC. Licensed in Arkansas, Illinois, Iowa, Kansas, Minnesota, Missouri, Nebraska, Oklahoma, South Dakota, Tennessee, Texas, Wisconsin, and Wyoming.