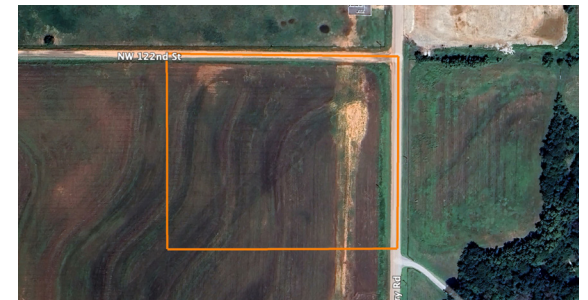


LAND FOR SALE

# 5 +/- ACRE RANCHETTE AT 122ND & GREGORY COUNTRY LIVING WITH CITY CONVENIENCE

PRICE: **\$149,500**  
COUNTY: **CANADIAN**  
STATE: **OKLAHOMA**  
ACRES: **5**



## PROPERTY FEATURES

- Great access to surrounding cities
- Located on the border of Yukon, OKC, and El Reno
- At the intersection of 122nd and Gregory
- Over 400 feet of blacktop frontage
- Gravel road on north boundary
- Power located along Gregory Road
- Riverside Public School (PreK-8)
- 3.3 miles to NW Expressway/Highway 3
- Less than 10 miles to I-40



For more information, contact:

**BRADEN POLLARD**, Land Agent

**580.222.5265** | [BPollard@MidwestLandGroup.com](mailto:BPollard@MidwestLandGroup.com)

**MidwestLandGroup.com**

