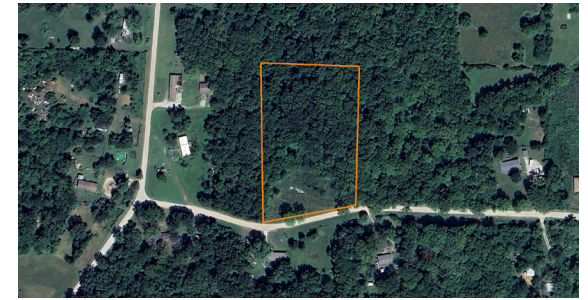


LAND FOR SALE

# GREAT BUILD SITE IN RURAL LAFAYETTE COUNTY

COUNTY: **LAFAYETTE**  
STATE: **MISSOURI**  
ACRES: **2.13**



## PROPERTY FEATURES

- Approved for residential build
- Just over half mile from paved road
- 7 miles south of Bates City
- Less than 30 minutes from KC suburban areas
- Rural setting
- Mostly treed
- Cleared build area along road
- Lots 40 & 41 Haynes Hills



For more information, contact:

**JASON HILBRENNER**, Land Agent

**660.770.3165** | [JHilbrenner@MidwestLandGroup.com](mailto:JHilbrenner@MidwestLandGroup.com)

**MidwestLandGroup.com**

