

MIDWEST LAND GROUP PRESENTS

10+ ACRE LOTS OUTSIDE OF LONE JACK

JACKSON COUNTY MISSOURI



MidwestLandGroup.com

MIDWEST LAND GROUP IS HONORED TO PRESENT

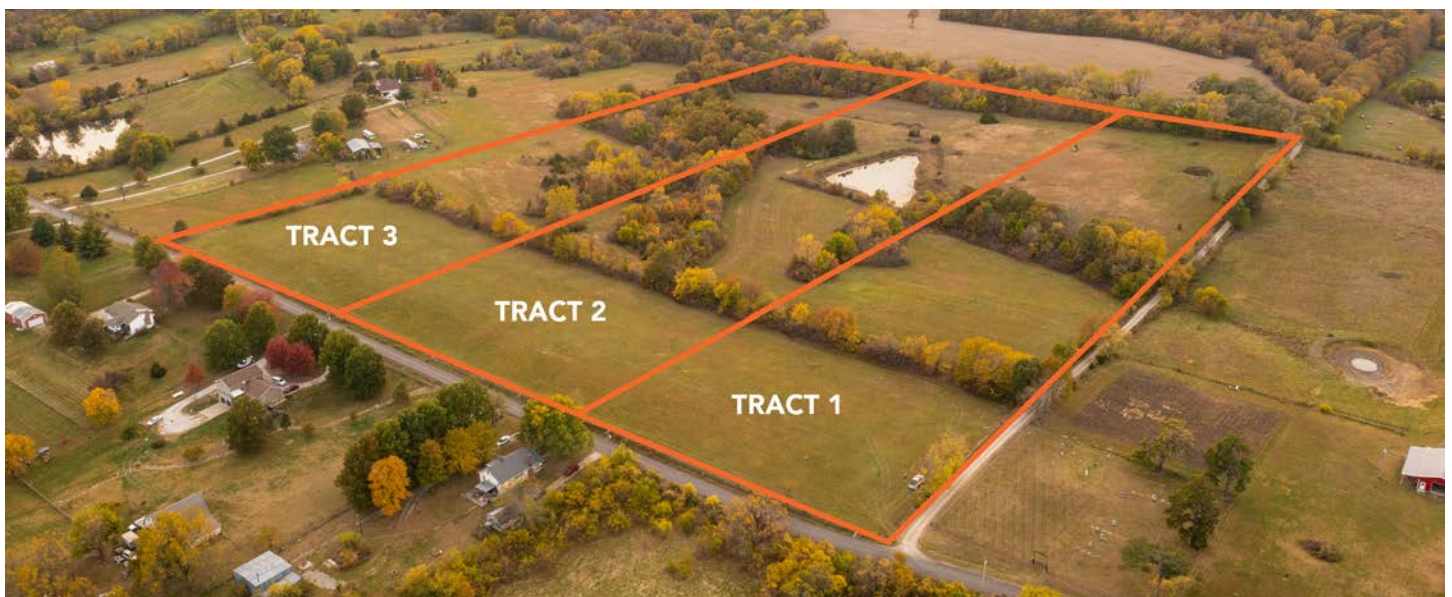
BEAUTIFUL JACKSON COUNTY BUILD SITES

Here are perfect and rare-to-find build sits in eastern Jackson County! This 33.43 +/- surveyed acre tract is located just east of Lone Jack with blacktop road frontage. Rural water and electricity are at the road and the location couldn't be any more convenient as it sits a half mile off 50 Highway. Talk about a prime location! The first thing you will notice is the incredible curb appeal and welcoming feeling of this property. It consists of a great mix of open pasture and wooded

tree lines. The land features rolling topography and hidden fields with incredible views! You will have a tough time deciding which tract to build your dream home! Escape from the neighborhood life and have room to roam. Hunt and explore right out the back door. Enjoy amazing sunrises and sunsets. The possibilities are endless! Don't miss out on this opportunity. Build sites with recreational opportunities this close to the city are hard to come by!

PROPERTY FEATURES

- 10+ acre lots
- Blacktop road access
- Water and electricity runs along the road
- Picturesque build sites
- Rolling topography with amazing views
- Open pasture and mature trees
- Great recreational opportunities
- Lone Jack School District
- 4 miles to Lone Jack
- 16 miles to Lee's Summit
- 35 miles to Kansas City
- 1 hour to Kansas City International Airport



TRACT 1

PRICE: **\$265,000** | ACRES: **9.96**

- Picturesque build site
- Blacktop road access
- Rolling topography with amazing views
- Open pasture and mature trees
- Great recreational opportunities
- Lone Jack School District
- 4 miles to Lone Jack
- 16 miles to Lee's Summit
- 35 miles to Kansas City
- 1 hour to Kansas City International Airport

TRACT 2

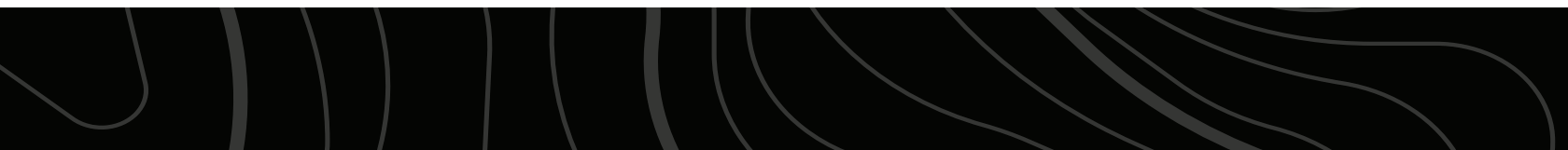
PRICE: **\$309,995** | ACRES: **11.73**

- Stocked fishing pond
- Blacktop road access
- Picturesque build-site with amazing views
- Open pasture and mature trees
- Fish, hunt, and explore
- Lone Jack School District
- 4 miles to Lone Jack
- 16 miles to Lee's Summit
- 35 miles to Kansas City
- 1 hour to Kansas City International Airport

TRACT 3

PRICE: **\$299,995** | ACRES: **11.74**

- Open pasture
- Picturesque build site with blacktop road access
- Rolling topography with amazing views
- Wooded areas with mature trees
- Great recreational opportunities
- Lone Jack School District
- 4 miles to Lone Jack
- 16 miles to Lee's Summit
- 35 miles to Kansas City
- 1 hour to Kansas City International Airport



PICTURESQUE BUILD SITES



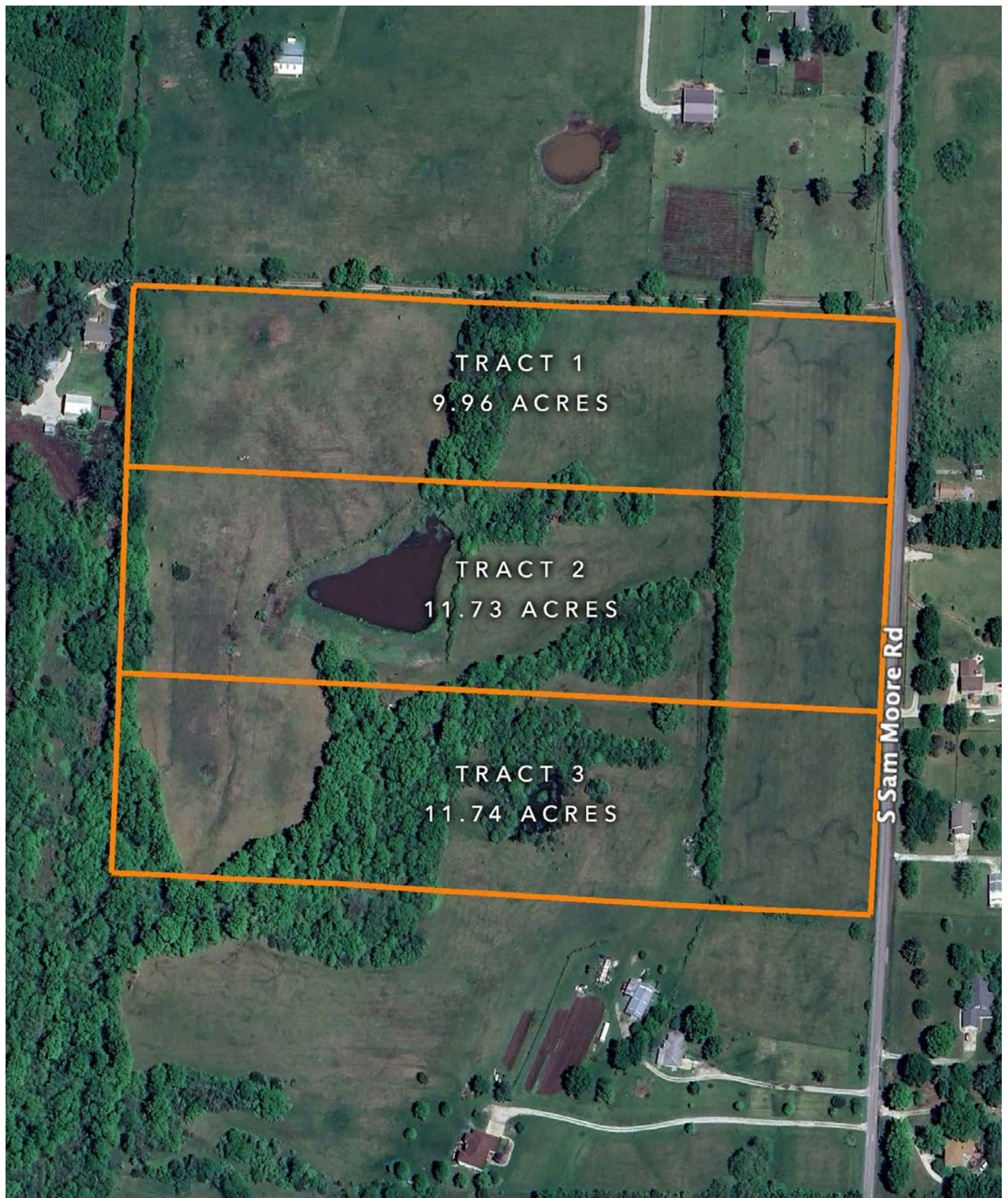
BLACKTOP ROAD FRONTAGE FOR ALL LOTS



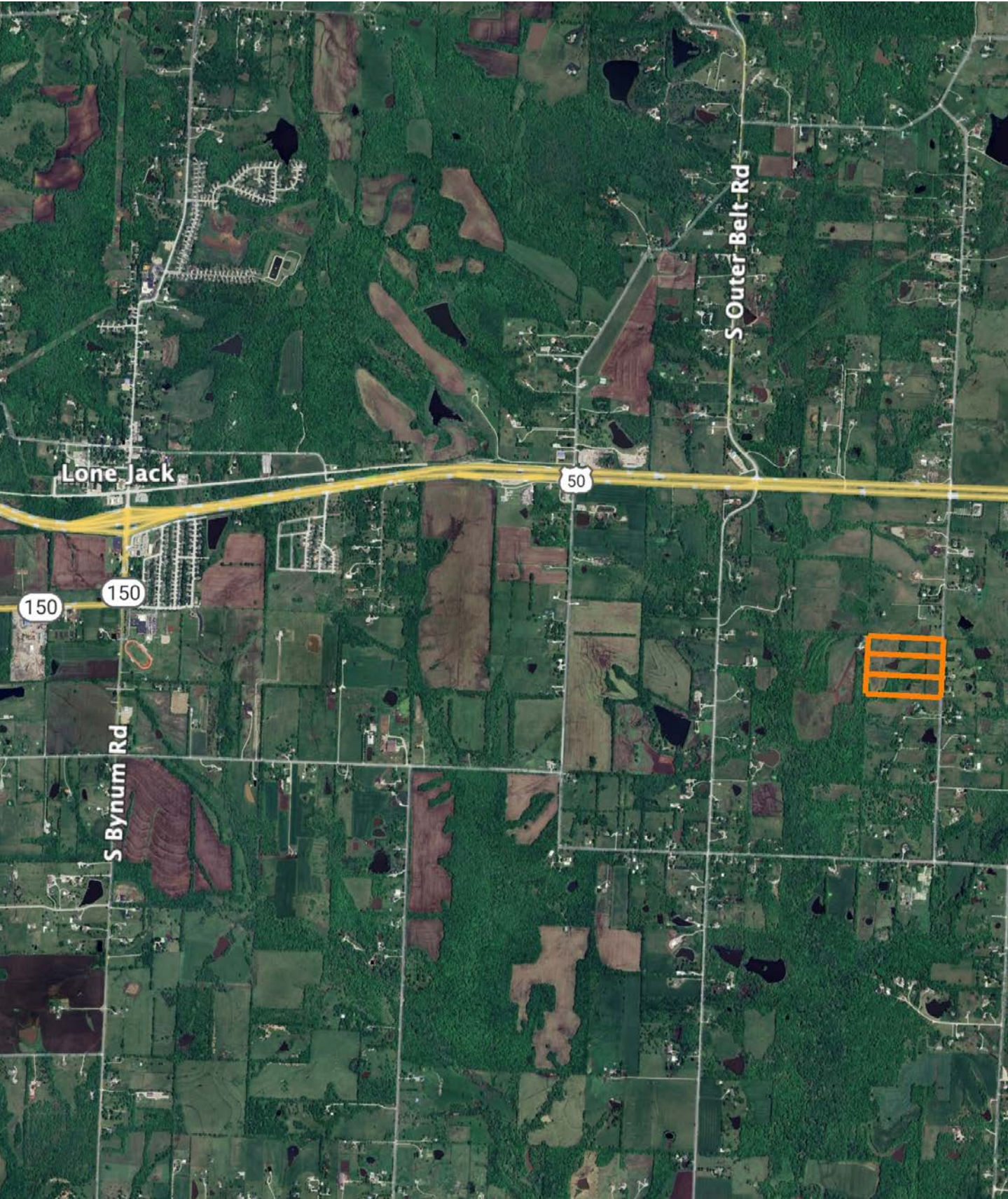
ADDITIONAL PHOTOS



AERIAL MAP



OVERVIEW MAP



AGENT CONTACT

Skyler Wirsig is a seasoned steward of the land with a firm focus on developing and managing agricultural properties. Over 15 years, he has gained invaluable experience filming and hunting for the Outdoor Channel's Heartland Bowhunter, which has earned several accolades under his watch.

Hailing from Kansas City, Missouri, Skyler graduated from William Jewell College with degrees in Business Administration and Critical Thought & Inquiry. His previous role as an operations manager, handling sales and customer relationships across 20 countries, enhances his effectiveness as a real estate agent.

A dedicated sportsman, Skyler proudly holds the Archery Missouri State Record for an 8-point whitetail. Despite his professional accomplishments, he remains approachable, enjoying fishing, sports, and travel with his family. Skyler also volunteers for the Wounded Warriors in Action Foundation. Residing on his farm in Grain Valley, Missouri, with his wife and sons, Skyler brings a wealth of expertise and a down-to-earth attitude to land sales in the Midwest.



SKYLER WIRSIG

LAND AGENT

816.500.0168

SWirsig@MidwestLandGroup.com



MidwestLandGroup.com

This property is being offered by Midwest Land Group, LLC. 913.674.8010. All information provided by Midwest Land Group, LLC or their agents was acquired from sources deemed accurate and reliable, however we do not warrant its accuracy or completeness. Midwest Land Group, LLC assumes no liability for error, omission or investment results. Midwest Land Group, LLC. Licensed in Arkansas, Illinois, Iowa, Kansas, Minnesota, Missouri, Nebraska, Oklahoma, South Dakota, Tennessee, Texas, Wisconsin, and Wyoming.