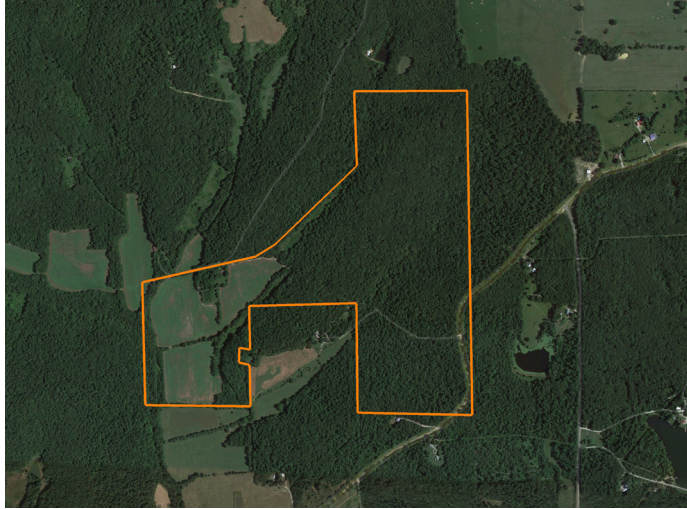


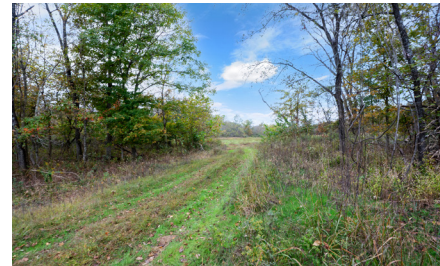
# LAND FOR SALE

## 225 +/- ACRE BOLLINGER COUNTY FARM



### PROPERTY FEATURES

- Year-round Cane Creek on property
- Build locations
- Productive hay fields
- Great hunting
- Electricity and water onsite
- Bottomland fields
- Multiple access points
- 5 miles to Marble Hill
- 25 miles to Jackson
- 30 miles to Cape Girardeau



For more information, contact:

**JASON STOKES**, Land Agent

636.465.9445 | JStokes@MidwestLandGroup.com

**MidwestLandGroup.com** BUYERS, SELLERS, AND LAND – CONNECTED

Midwest Land Group, LLC, 913.674.8010, Licensed in Arkansas, Illinois, Iowa, Kansas, Minnesota, Missouri, Nebraska, Oklahoma, South Dakota, Tennessee, Texas, Wisconsin, and Wyoming.



PRICE: **\$661,500**

COUNTY: **BOLLINGER**

STATE: **MISSOURI**

ACRES: **225**

