

MIDWEST LAND GROUP PRESENTS

LOTS IN EDGE WATER VILLAGE

---

# STONE COUNTY MISSOURI



[MidwestLandGroup.com](http://MidwestLandGroup.com)



MIDWEST LAND GROUP IS HONORED TO PRESENT

# AFFORDABLE BUILD LOTS IN EDGE WATER VILLAGE, MISSOURI

---

Incredible opportunity to purchase a quaint build lot that includes all utilities in the quiet lake neighborhood of Edge Water Village! These lots have electrical, water, and sewer connections available. These lots are within 5 miles of the Cape Fair Marina and even closer to the nearest boat launch. Shopping is also

just 15 minutes away in Branson West so you'll get to enjoy the quiet serenity of the lake community while also having convenience! This subdivision requires a minimum of 1,500 square feet of living space, excluding garage, basement, or porches. Detached outbuildings are allowed.

## PROPERTY FEATURES

---

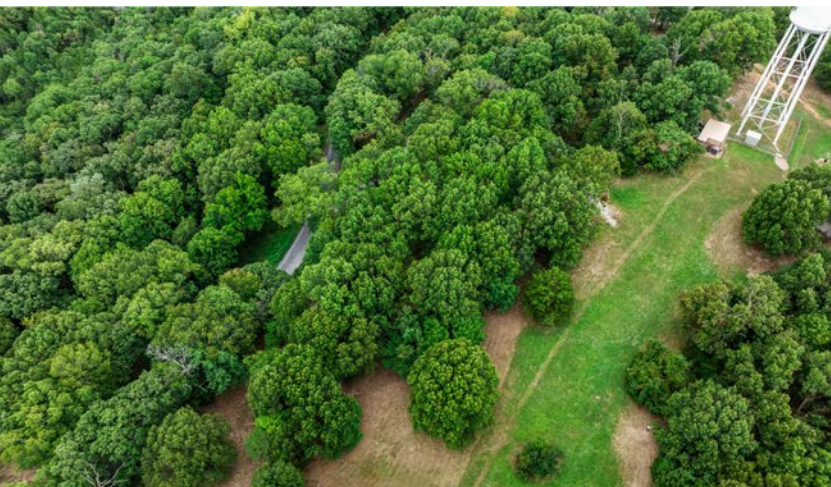
- Utilities
- Paved road frontage
- Small neighborhood
- Close to Table Rock Lake
- Secluded and convenient
- Lighter restrictions





# LOT 5

PRICE: **\$8,000** | ACRES: **0.7**





# LOT 12

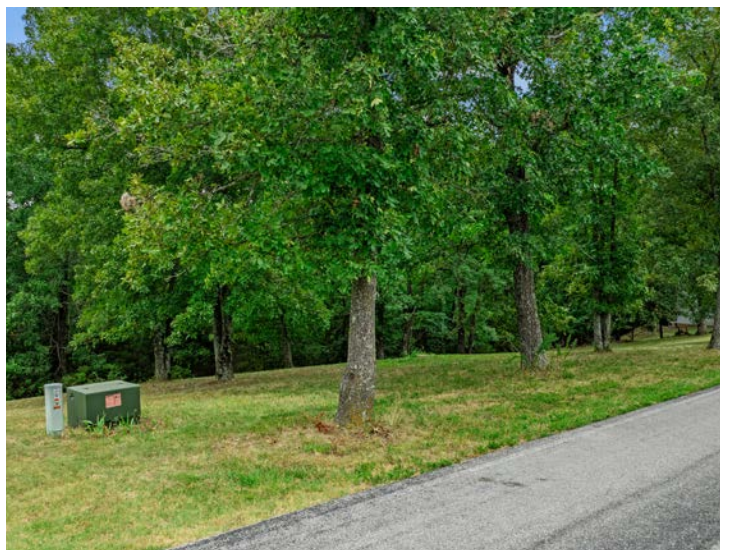
PRICE: **\$15,000** | ACRES: **0.7**





# LOT 23

PRICE: **\$15,000** | ACRES: **0.7**





# LOT 31

PRICE: **\$15,000** | ACRES: **1**





# LOT 36

PRICE: **\$8,000** | ACRES: **0.7**





# LOT 37

PRICE: **\$8,000** | ACRES: **0.7**





# LOT 38

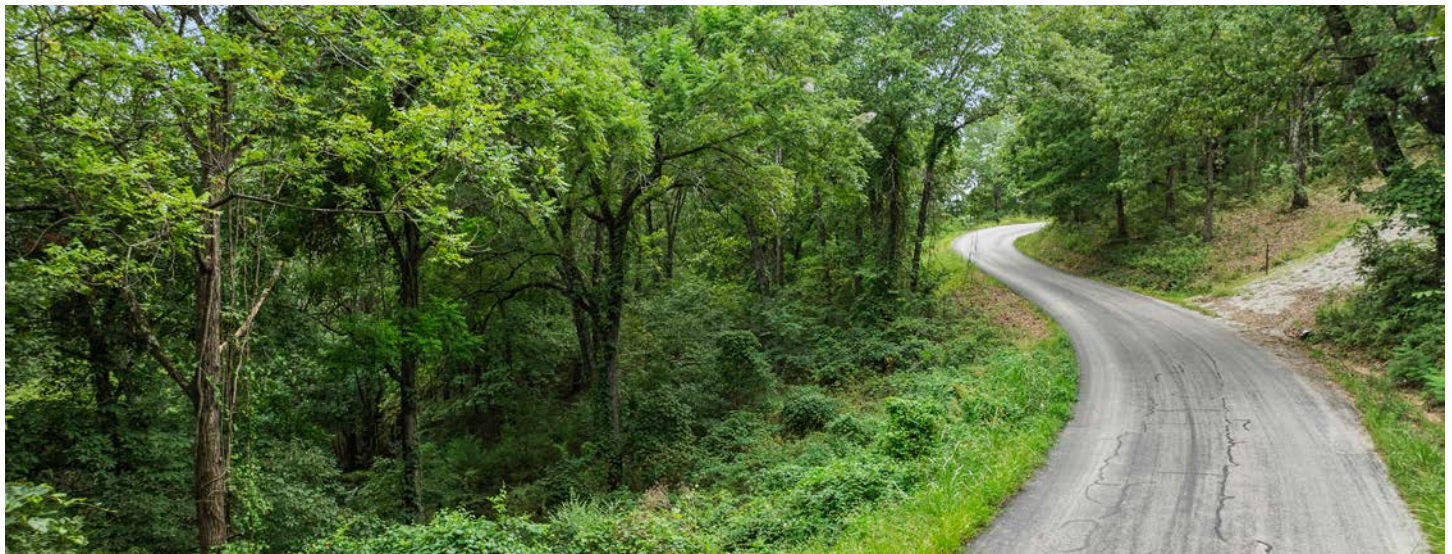
PRICE: **\$8,000** | ACRES: **0.7**





# LOT 39

PRICE: **\$8,000** | ACRES: **0.8**





# AERIAL MAP - LOT 5

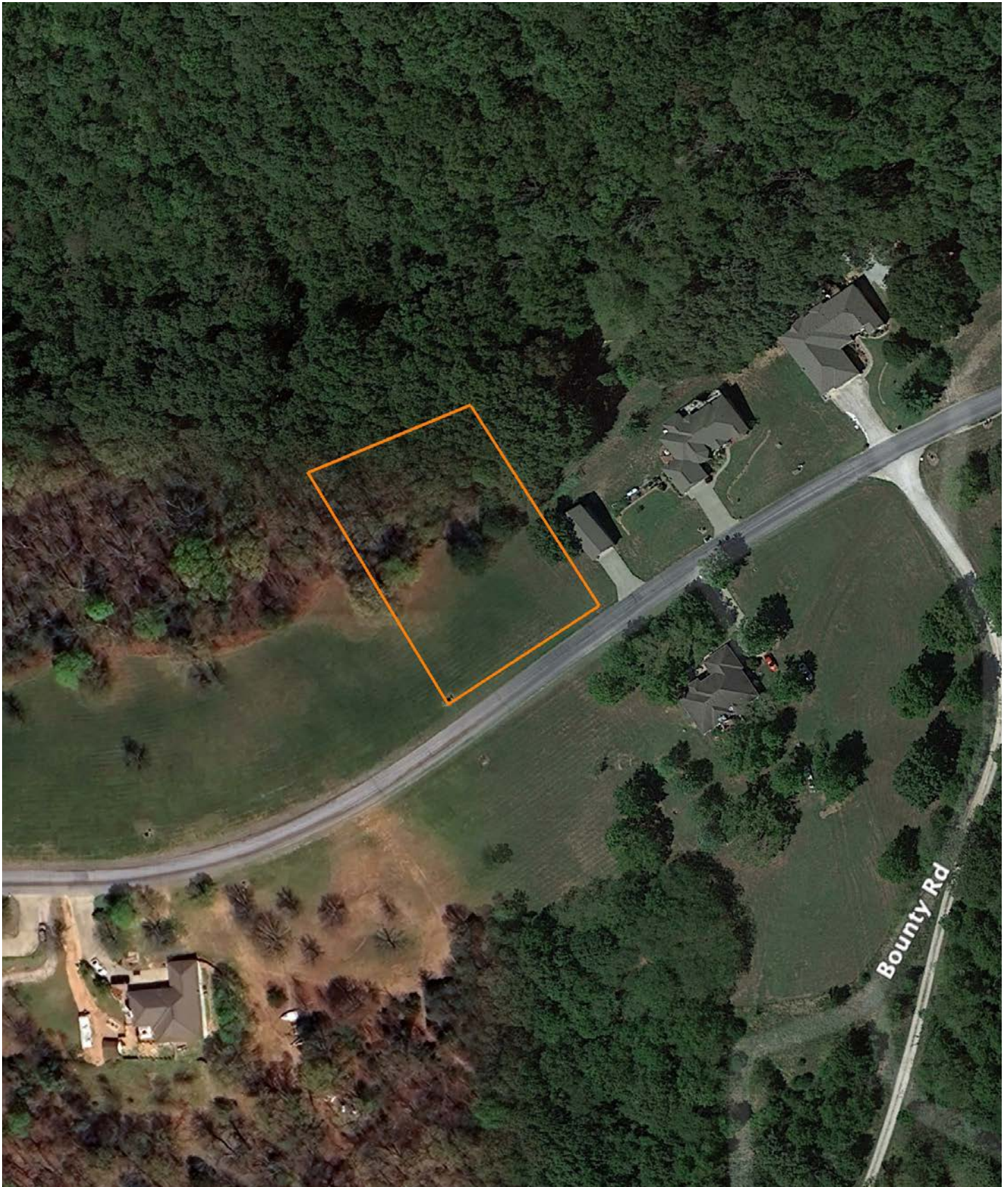
---





# AERIAL MAP - LOT 12

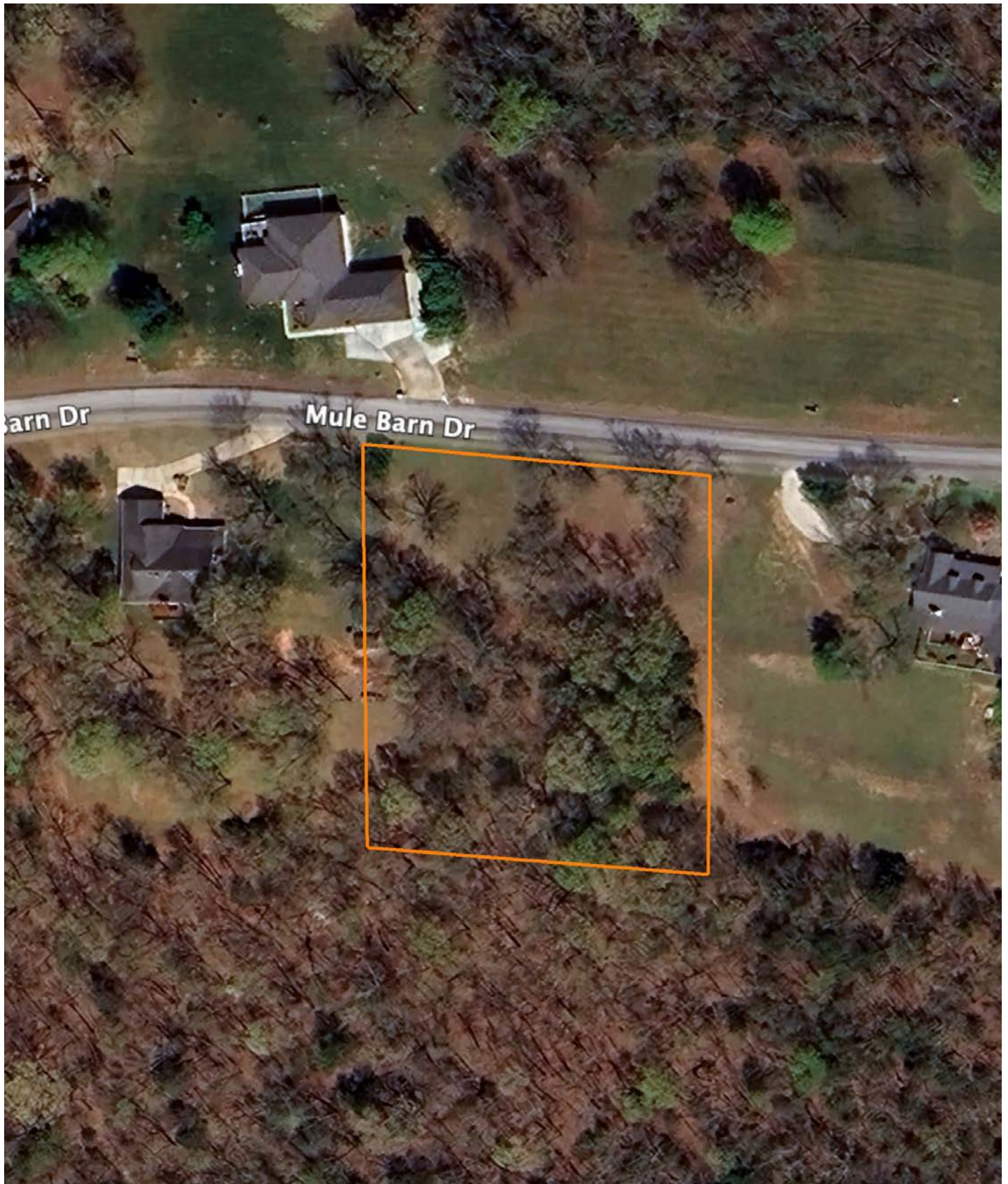
---





## AERIAL MAP - LOT 23

---





# AERIAL MAP - LOT 31

---





# AERIAL MAP - LOT 36

---





# AERIAL MAP - LOT 37

---





# AERIAL MAP - LOT 38

---





## AERIAL MAP - LOT 39

---





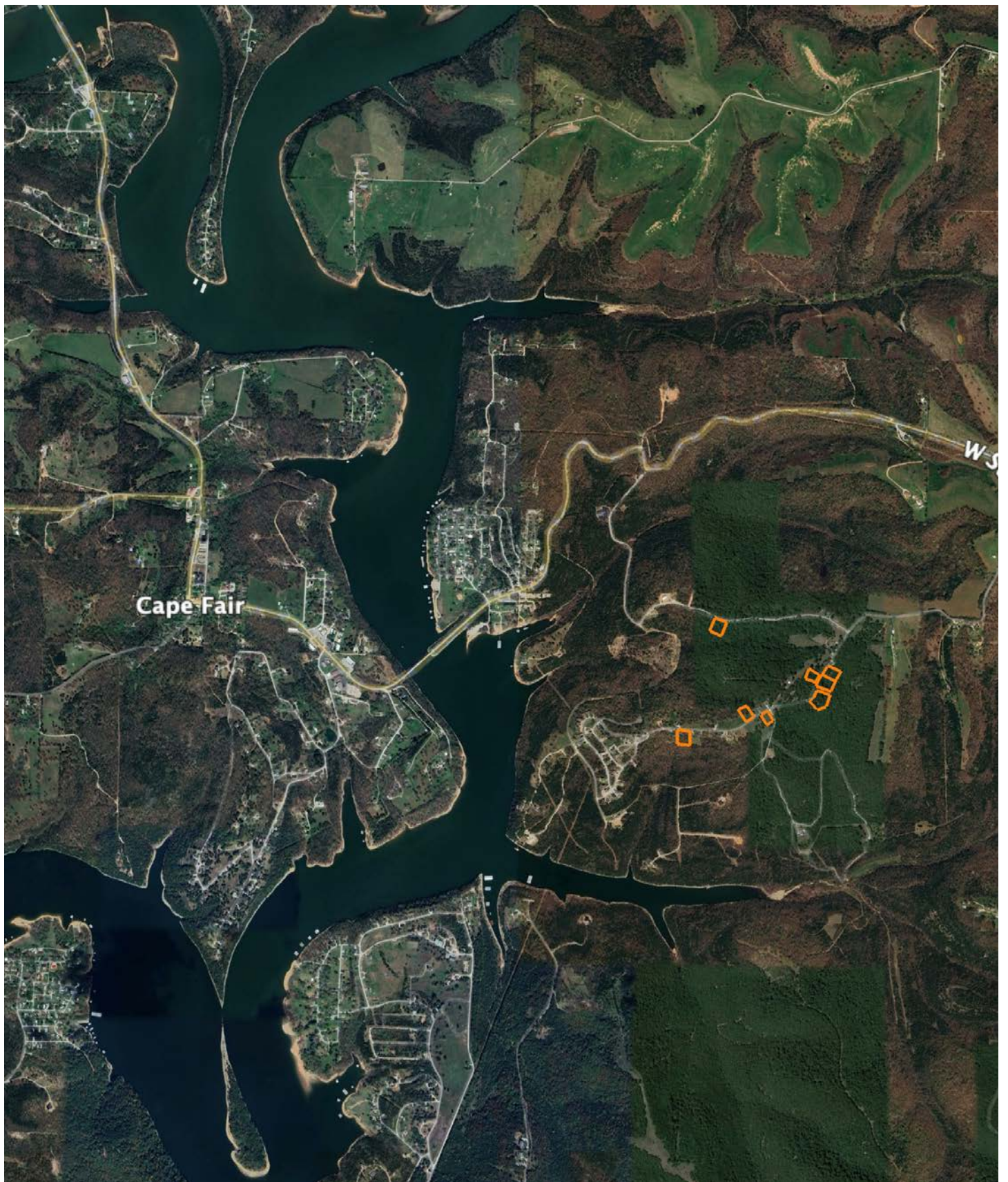
# ALL AVAILABLE LOTS





# OVERVIEW MAP

---





# AGENT CONTACT

Looking for land or selling a piece of property can be stressful or overbearing, but not if you're working with the right agent. Bjorn Wilkerson is all about making sure each client has an enjoyable experience from start to finish. A lifelong lover of the outdoors, Bjorn has a background in agriculture and a passion for all things outdoors. This includes hunting, fishing, camping, traveling, hiking, and land management, not to mention his personal favorites: spring turkey hunting, whitetail hunting, and bowfishing. Born in West Plains, Missouri, Bjorn attended Couch High School and graduated from Missouri State University—Springfield with a degree in Wildlife Management. Before coming to Midwest Land Group, he worked in agriculture and operations with Archer Daniels Midland (ADM), a human and animal nutrition company specializing in agricultural origination and processing, where he worked his way around the company, serving in a variety of positions, everything from trainee, plant manager, and recruiter to new manager development specialist and continuous improvement practitioner. Being a service to someone looking for hunting or farming property is what drives Bjorn. He wants each experience to not only be enjoyable, but seamless as well. If you're in the market to sell or buy land, give Bjorn a call.



**BJORN WILKERSON,**  
LAND AGENT

**417.233.1243**

[BWilkerson@MidwestLandGroup.com](mailto:BWilkerson@MidwestLandGroup.com)



## MidwestLandGroup.com

This property is being offered by Midwest Land Group, LLC. 913.674.8010. All information provided by Midwest Land Group, LLC or their agents was acquired from sources deemed accurate and reliable, however we do not warrant its accuracy or completeness. Midwest Land Group, LLC assumes no liability for error, omission or investment results. Midwest Land Group, LLC. Licensed in Alabama, Arkansas, Illinois, Iowa, Kansas, Kentucky, Louisiana, Minnesota, Mississippi, Missouri, Montana, Nebraska, Ohio, Oklahoma, South Dakota, Tennessee, Texas, Wisconsin, and Wyoming.