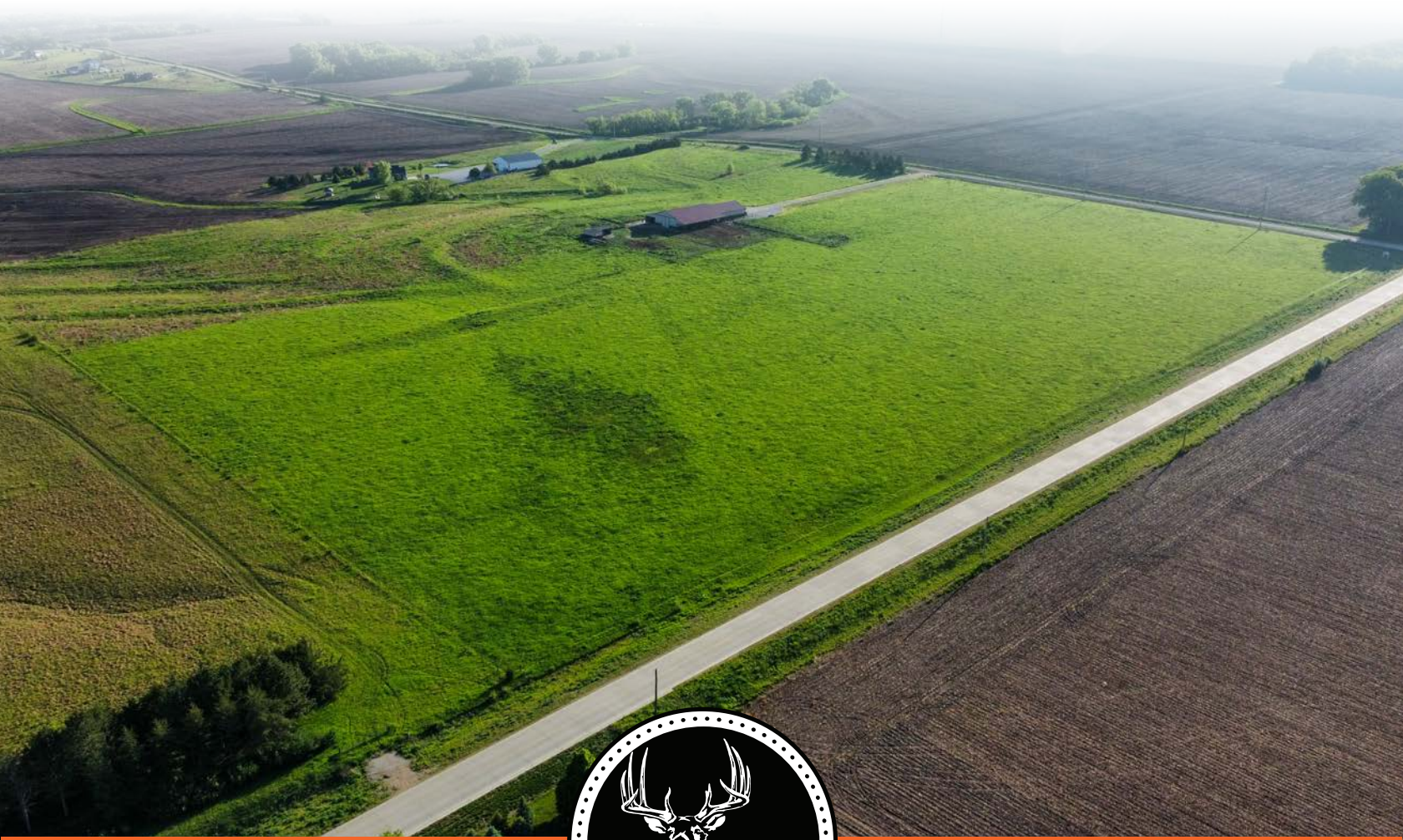


MIDWEST LAND GROUP PRESENTS

5+ ACRE LOTS IN HERITAGE FARMS

# SEWARD COUNTY NEBRASKA



[MidwestLandGroup.com](http://MidwestLandGroup.com)

MIDWEST LAND GROUP IS HONORED TO PRESENT

# HERITAGE FARMS IN SEWARD, NEBRASKA

---

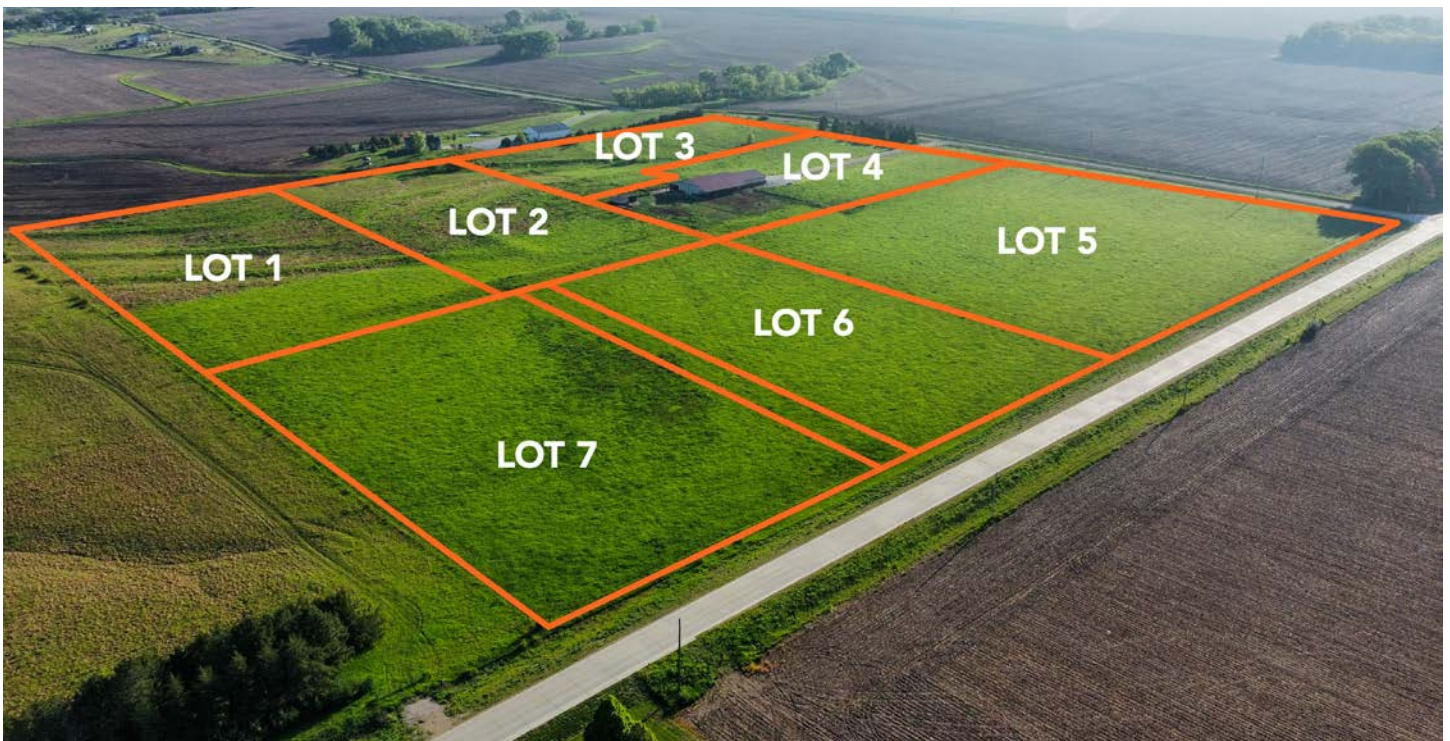
Welcome to Heritage Farms! Seward, Nebraska's newest acreage development is offering 5+ acre buildable lots, less than a mile from the edge of town. Get out of town and enjoy quiet country living with a great view! Each lot has ample space to build your dream home and

outbuilding, let your large and small pets roam, and raise a garden to feed your family. These gorgeous lots enjoy easy access to I-80 and are only 30 minutes to Fallbrook or downtown Lincoln. Don't miss out on these rare finds, so close to Seward and Lincoln!

## PROPERTY FEATURES

---

- 5+ acre lots available in Heritage Farms
- Seward, Nebraska's newest acreage development
- Less than a mile from the edge of Seward
- Quiet country living with scenic views
- Ample space to build your dream home and outbuilding
- Large and small animal pets welcome
- Paved access to the property on Waverly Road
- Electric, gas, and fiber internet all at the road
- Easy access to Seward and I-80
- Only 30 minutes from Fallbrook or downtown Lincoln



## LOT 1

PRICE: **\$225,000** | ACRES: **5.41**

---

- Furthest northwest corner of the development
- Most secluded from neighboring properties
- Stunning views of the timbered creek bottom to the north
- Perfect hilltop walkout build site options
- Well-established stand of native grass throughout the lot
- Possible pond site at the bottom of the hill
- Owned access to Waverly Road

## LOT 2

PRICE: **\$225,000** | ACRES: **5.43**

---

- Sits in the north half of the development
- Quiet setting away from the nearest roads
- Great hilltop walkout build site options
- Gorgeous views of the timbered creek bottom to the north
- Well-established stand of native grass throughout the lot
- Owned access to Waverly Road

## LOT 5

PRICE: **\$195,000** | ACRES: **5.5**

---

- Largest lot available in Heritage Farms
- Sits in the southeast corner of the development
- Road frontage on Waverly Road and 252nd Road
- Lies mostly flat with plenty of build site options for a home and outbuilding
- Well-established mixed bromegrass pasture throughout the lot
- Great fit for the large animal enthusiast

## LOT 6

PRICE: **\$195,000** | ACRES: **5.1**

---

- Only 30 minutes from Fallbrook or downtown Lincoln
- Sits in the south half of Heritage Farms
- Plenty of road frontage along Waverly Road
- Lies mostly flat with plenty of build site options for a home and outbuilding
- Well-established mixed bromegrass pasture throughout the lot
- Great fit for the large animal enthusiast

## LOT 7

PRICE: **\$195,000** | ACRES: **5.1**

---

- Sits in the southwest corner of Heritage Farms
- Plenty of road frontage along Waverly Road
- Great views of the neighboring timber and creek bottom
- Possible daylight or walkout build site options
- Established bromegrass pasture throughout the lot
- Great fit for the large animal enthusiast

# EXCELLENT BUILD SITES

---



# LESS THAN A MILE FROM SEWARD

---



## PAVED ROAD FRONTAGE & UTILITIES AT ROAD

---



# AERIAL MAP



Maps Provided By:



© AgriData, Inc. 2023      www.AgriDataInc.com

Boundary Center: 40° 55' 56.38, -97° 3' 56.71

**10-11N-3E**  
**Seward County**  
**Nebraska**

0ft      319ft      637ft



7/25/2024

# OVERVIEW MAP



# AGENT CONTACT

Jake Crnkovich loves the outdoors. From farming and ranching to serious trophy hunting and management practices, Jake's experiences have set him up to be a model land agent. His outdoor career started by managing the Archery and Hunting Shop at Scheels. From there, he took a sales position with an outdoor and ag equipment company before finally becoming a land agent. At Midwest Land Group, Jake is able to bring his knowledge and passion for the outdoors to the very people who seek it. Raised in Ashland, between Omaha and Lincoln on the Platte River, Jake went to Ashland-Greenwood High School and the University of Nebraska at Lincoln. Today, he lives in Ashland with his wife, Nicole, their two daughters, Mackenna and Natallie, and three dogs.

When not building selling land, Jake enjoys spending time bowhunting, waterfowl hunting, competing in archery and bowfishing tournaments, fishing, airboating, dog training, camping, and enjoying sports with his family. A member of Ducks Unlimited, Bowfishers of Nebraska, Bowfishing Association of America, Nebraska Bowhunters Association, and the Sportsman's Alliance, Jake is an expert at precision bow tuning (from setup to shooter training) and excels at dissecting properties to find the best usage for the different seasons. With his diverse background in sales and customer service, Jake is able to quickly relate and cater to anyone who shares his passion for the outdoors. If this sounds like you, be sure to give Jake a call.



**JAKE CRNKOVICH,**  
LAND AGENT

**402.670.0504**

JCrnkovich@MidwestLandGroup.com



## MidwestLandGroup.com

This property is being offered by Midwest Land Group, LLC. 913.674.8010. All information provided by Midwest Land Group, LLC or their agents was acquired from sources deemed accurate and reliable, however we do not warrant its accuracy or completeness. Midwest Land Group, LLC assumes no liability for error, omission or investment results. Midwest Land Group, LLC. Licensed in Arkansas, Illinois, Iowa, Kansas, Minnesota, Missouri, Nebraska, Oklahoma, South Dakota, Texas, Wisconsin, and Wyoming.