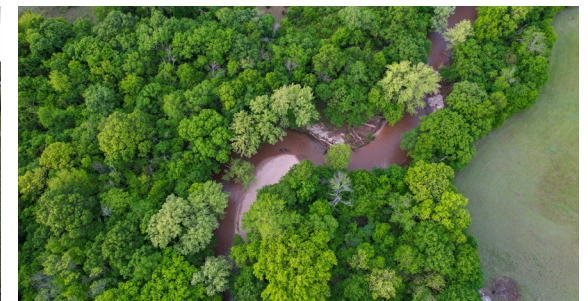


LAND FOR SALE

35.5 ACRES OF UNTAPPED POTENTIAL IN MURRAY COUNTY

PRICE: **\$252,000**
COUNTY: **MURRAY**
STATE: **OKLAHOMA**
ACRES: **35.5**



PROPERTY FEATURES

- Paved county road frontage
- Rural water and electric available
- Wet weather Chigley Sandy Creek
- Less than 15 miles from multiple recreational areas and activities
- Within 1.5 hours from Oklahoma City and 2.5 hours from Dallas
- Diverse topography
- Davis School District
- Multiple build sites
- Beautiful views



For more information, contact:

LAUREN McDONALD, Land Agent

918.928.3345 | LMcDonald@MidwestLandGroup.com

MidwestLandGroup.com

